

# Soft Docking Special

- Efficient assistance for reversing to the ramp
- Helps to avoid expensive damages
- Applies brakes automatically at 1.0 m distance
- Stand-alone solution for trailers
- Low investment, easy to retro-fit



Haldex

## SOFT DOCKING: THE THIRD EYE

# Safe Investment

**Accidents happen all too easily when docking at a loading bay. Soft Docking helps to prevent damages:**

- Two ultrasonic sensors mounted on the rear of the vehicle detect the current distance to the loading bay.
- This distance information is transferred to the Soft Docking Junction Box which is connected to EB+.
- When the vehicle approaches the loading bay, Soft Docking kicks into action. At a 3 metre distance, the driver receives optical and audio warnings. If the rear of the vehicle comes to 1 metre, the system applies the brakes with a force automatically adjusted for the speed of the vehicle and the weight of the load.
- At a distance of less than 0.5m, the fast 'beep' of the audio warnings gives way to a continuous tone, and the position lamps are permanently lit. For supplies at night, Soft Docking can easily be switched to mute.

## Easy to install, quick retro-fit

Soft Docking is installed on the trailer. The system does not require any connection to the tractor unit: Soft Docking functions as a stand-alone solution.

Retrofitting can be done very easily. The system is compatible with first and second generation of EB+.

Soft Docking is already integrated in the software of EB+ Gen2.

[www.haldex.com](http://www.haldex.com)

# Soft Docking Special



## The Expert's Voice

**Adam Purshall,**  
fleet Manager of  
TM Logistics (GB)

**Soft Docking will be part of the standard specification for all newly purchased trailers. Which benefit do you expect?**

**Purshall:** "It brings more safety in general and less damage at the ramp. We have 260 trailers and do 24 million kilometres per year. Soft Docking will save us considerable amounts in costs."

**What is your experience with Soft Docking so far?**

**Purshall:** "We have done extensive tests. The system is very effective".

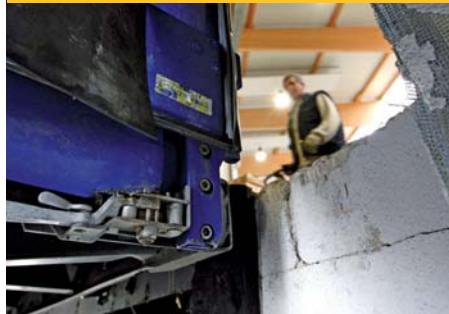
**What is the conclusion of your workshop as to retrofitting?**

**Purshall:** "Soft Docking is extremely simple and straightforward to install".



More info

[www.haldex.com/CVS\\_EU](http://www.haldex.com/CVS_EU)



## If it can go wrong it will.

Murphy's law holds even for docking to a loading bay: if it can go wrong it will. Statistics show that about 35% of all incidents causing damage occur when reversing a truck.

- About every three months, a refrigerated vehicle takes a knock that results in damage costing, on average, EUR 500 to 1300
- On average, Soft Docking pays for itself in less than six months.

## Small things add up the damage to a large amount!

### Typical Repair costs:

Repair	Assembly time	Cost
Both doors on the rear replaced, hinges repaired	ca. 3.0 hours	min. 2.300 €
Doors varnished	ca. 2.0 hours	min. 300 €
Doors labelled / pasted	according to effort	min. 200 €
Under-run protection and lighting repaired	ca. 3,0 hours	min. 800 €

**Haldex Ltd** Hilton Road, Aycliffe Industrial Park  
Newton Aycliffe Co. Durham, GB - DL5 6SX  
Tel.: +44 (0) 1325 310 110, Fax: +44 (0) 1325 311 834  
E-mail: info.GBAy@Haldex.com

