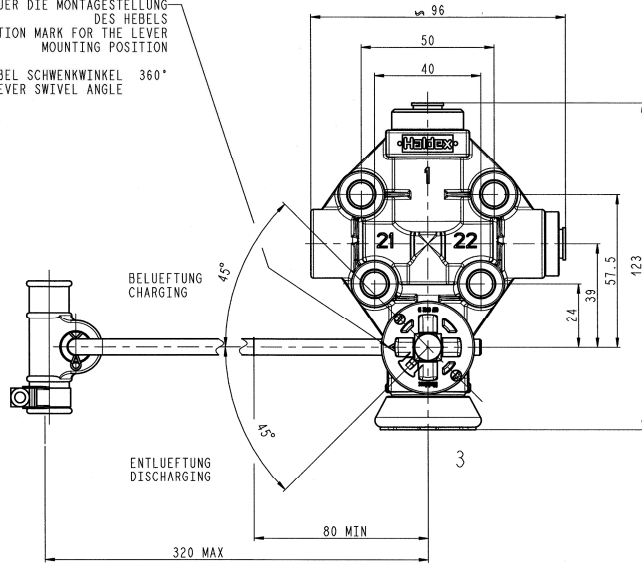
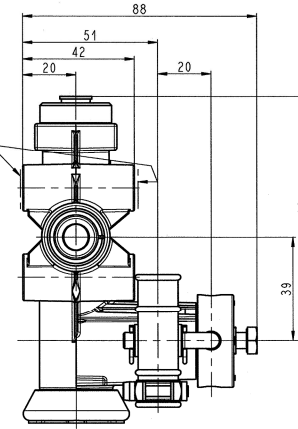


MARKIERUNG FUER DIE MONTAGESTELLUNG
DES HEBELS
IDENTIFICATION MARK FOR THE LEVER
MOUNTING POSITION

HEBEL SCHWENKWINKEL 360°
LEVER SWIVEL ANGLE



ANZIEHDREHMOMENT
TIGHTENING TORQUE : 22±2 Nm
SCHEIBE
WASHER : DIN 125-B
NICHT IM LIEFERUMFANG
NOT IN SCOPE OF DELIVERY



SW
WRENCH SIZE : 10
ANZIEHDREHMOMENT : 8 Nm
TIGHTENING TORQUE:

NULLPUNKTFIXIERUNG DES VENTILS
MITTELS ZYLINDERSTIFT ISO 2338-B-4x20
ZERO POINT ADJUSTMENT OF THE VALVE BY
MEANS OF THE DOWEL PIN 2338-B-4x20

ZUL.DYN.BALGDROCK
PERMISSIBLE DYNAMIC BELLOWS PRESSURE : Pe ≤ 20 bar
BETRIEBSDRUCK
OPERATING PRESSURE : Pe ≤ 13 bar
ZULAESSIGES MEDIUM
PERMISSIBLE MEDIUM : LUFT
: AIR
THERM. ANWENDUNGSBEREICH
THERM. RANGE OF APPLICATION : -45°C ... +85°C

ARBEITSBEREICH
WORKING RANGE
BELUEFTUNG
CHARGING : 45°
ENTLUEFTUNG
DISCHARGING : 45°

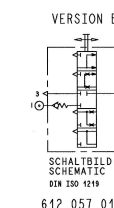
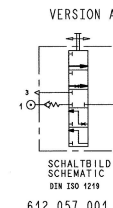
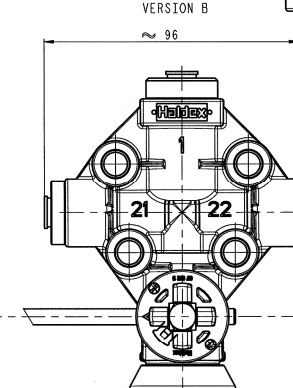
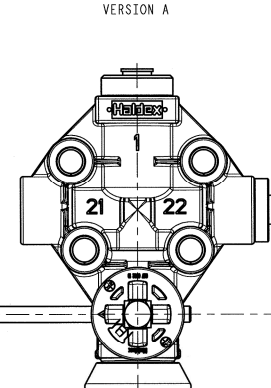
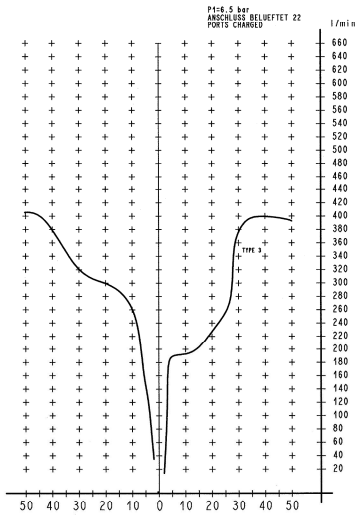
BETAETIGUNGSSEITE
OPERATING SIDE : LINKS UND RECHTS
: LEFT AND RIGHT
ANSCHLUESSE
PORTS

BELUEFTUNG
AIR INTAKE : 1
LUFTAUSGANG
AIR OUTPUT : 22, 21
ENTLUEFTUNG
AIR EXHAUST : 3

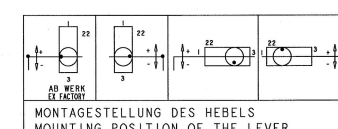
TOTWINKEL BEI:
P1 = 8.0 bar UND P2 = 7.0 bar : CA. ±2°
DEAD ANGLE AT:
P1 = 8.0 bar AND P2 = 7.0 bar : APPROX.

BEI VERDREHEN DES BETAETIGUNGHEBELS UM 180°
WIRD DIE GLEICHE FUNKTION INNERHALB EINES
TOLERANZBANDES VON ±3.5° ERREICHT, WIE IN GEZEICHNETER STELLUNG

BY ROTATING THE LINKAGE AROUND 180° THE SAME FUNCTION WILL
BE ACHIEVED WITHIN A TOLERANCE BAND OF ±3.5°,
AS IN DRAWN POSITION



BESTELL-NR. PART NO.	VERSION	ANSCHLUESSE PORTS	G	TYPE
612 057 001	A	1, 22	STECKVERBINDUNG FUER K-ROHR- DIN 74324-8x1 PUSH-IN FITTING FOR NYLON TUBE DIN 74324-8x1	3
612 057 011	B	1, 21		



2	0	AE.M.-NR. 10650	16.03.2009	HeiBler
1	0	AE.M.-NR. 10483	24.01.2008	Leoka
IND.	ANZ.	FREIGABE / AE.-NR. RELEASE / MODIF.C. NO.	DAT.	NAME

ALLGEMEINTOLERANZEN / GENERAL TOLERANCES		ADMESSUNGEN / RANGE OF NOMINAL DIMENSIONS		LEI-NUM
CLASS	HITZ THIS PART:	< 50	≥ 50	A
A	0,5	1,0	1,5	2,0
B	1,5	2,0	3,0	4,0
C	2,0	3,0	5,0	6,0

Haldex
Brake Products GmbH

ZEICHNUNG NR. / DWS NO. : 612 057 000 2
PROJECT:

SCALE : 1:1
BEZEICHNUNG / DESIGNATION : LUFTFEDERVENTIL
EPG LEVELING VALVE

EXZ. : 24.01.08
Leoka

INDEX : 02
FRG.-STU. : C

BLATT : 1
ANZ. : 1

SCHUTZRECHT DDB 34 - I - O - E - F - I - P - R - S - S
ALL RIGHTS RESERVED - Haldex Brake Products GmbH