

Air Drier Conversion



Air Drier Conversion

Volvo F models with twin tower air drier

Contents

INTRODUCTION _____	2
PART IMAGE _____	3
OPERATIONAL INSTRUCTIONS _____	4
Dismantling _____	4
Assembling _____	5
• Assembling bracket _____	5
• Air drier _____	5
• Purge tank _____	5
• Air connectors _____	5
• Other _____	6
Control _____	6
• Function test _____	6
• Leakage test _____	6
• Other _____	6

INTRODUCTION

The following is an instruction about how to retrofit a Haldex Single Air Drier in a Volvo F truck, originally equipped with a twin tower air drier.

The kit includes all necessary detail for a complete air drier conversion

PART IMAGE

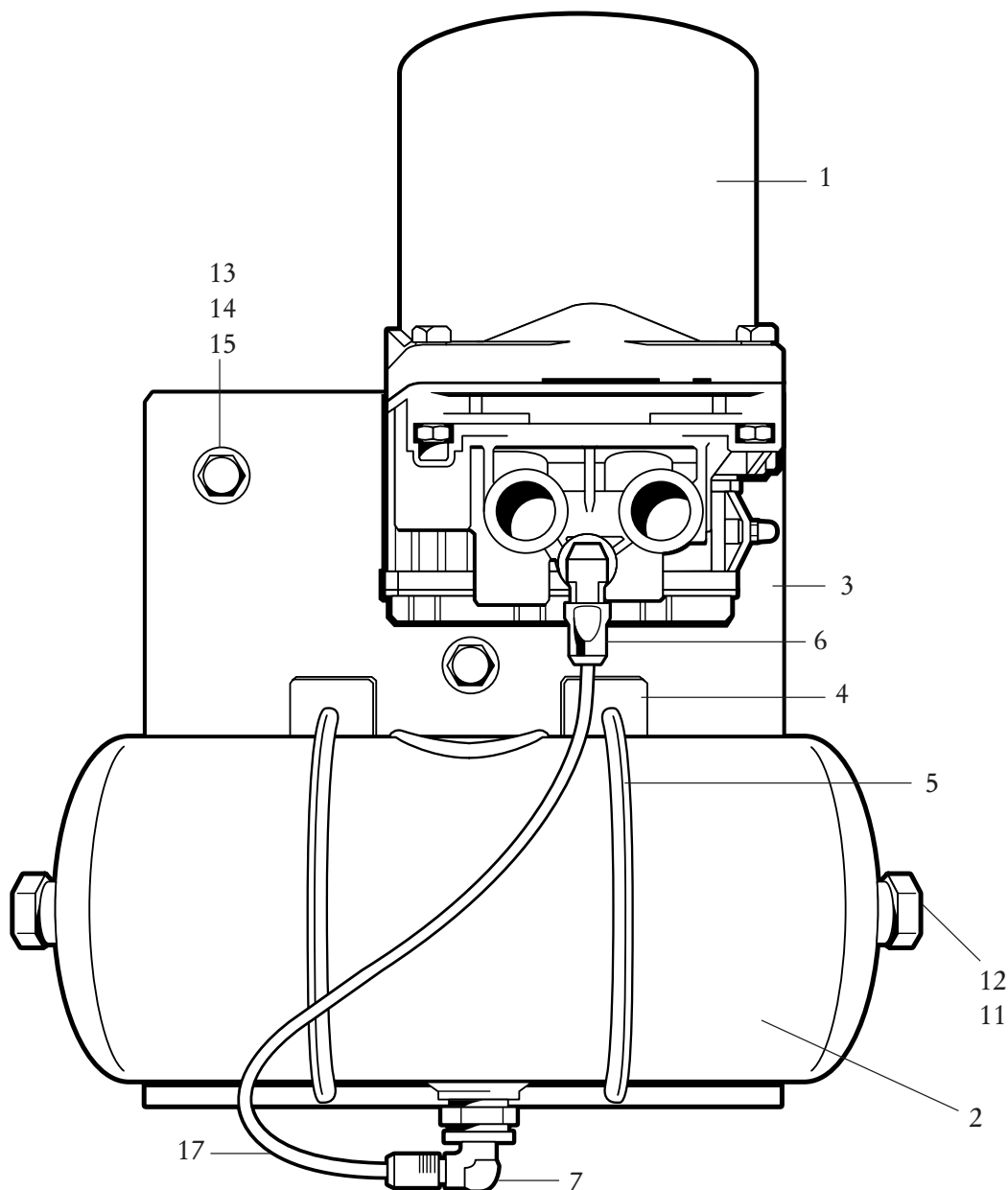


Fig 1

- | | |
|--|--------------------------------------|
| 1. Air drier | 10. O-ring, M22,2 x 3,0 (not shown) |
| 2. Purge tank | 11. O-ring, M20 x 2 |
| 3. Assembly bracket | 12. Plug |
| 4. Distance plate | 13. Screw M12 x 35, 2 pcs |
| 5. Fastener | 14. Lock nut |
| 6. Angular pipe fitting | 15. Washer |
| 7. Angular pipe fitting | 16. Screw M12 x 25,3 pcs (not shown) |
| 8. Plastic bag with joint fitting for mm (not shown) | 17. Pipe |
| 9. Plastic bag with joint fitting parts for inch (not shown) | |

OPERATIONAL INSTRUCTIONS

Dismantling

Activate the parking-brake.

Depressurise the air system.

Raise the cabin.

Dismantle all air pipes and electrical cables from the air drier.

Dismantle air connectors (18) and (19) from the air drier, (these are to be used in the new air drier). Fig 2.

Dismantle the air drier (three screws) and clean the frame bracket.

Dismantle the two air pipes which are assembled in the two-way connector at the governor inlet.

Dismantle the governor and the pipe between governor and air drier. The new air drier has an integrated governor.

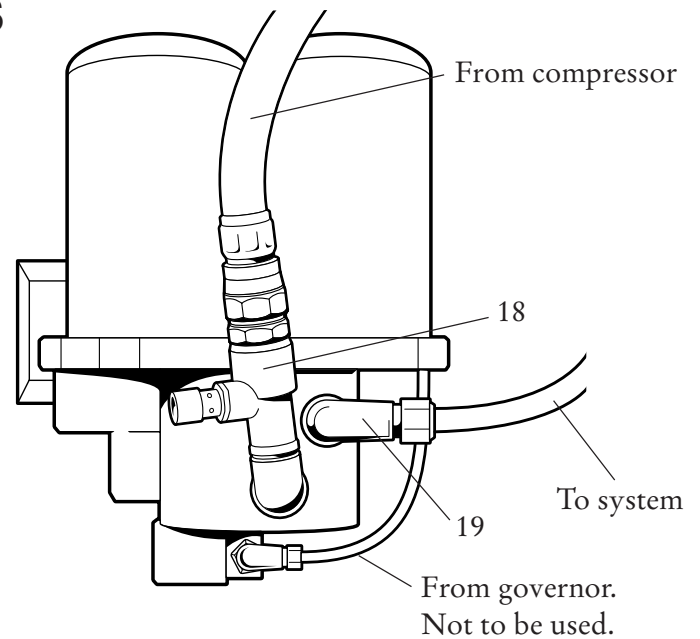


Fig 2

Assembling

For numbers in () in the text which do not appear in this section refer to Fig 1 and/or Fig 2.

Assembling bracket

Assemble bracket (3) onto the frame bracket with two screws (13) two nuts (14) and four washers (15) through the holes. Marked 1, Fig 3.

Drill the three 12mm screw-holes for the air drier in the frame bracket, through the holes. Marked 2, Fig 3.

Air drier

Assemble the air drier (1) onto the bracket (3) with three screws (16) and three washers (15), through the holes. Marked 2, Fig 3.

Purge tank

Assemble the purge tank (2) and the two distance plates (4) onto the assembling bracket (3) with fasteners (5) through the holes. Marked 3, Fig 3.

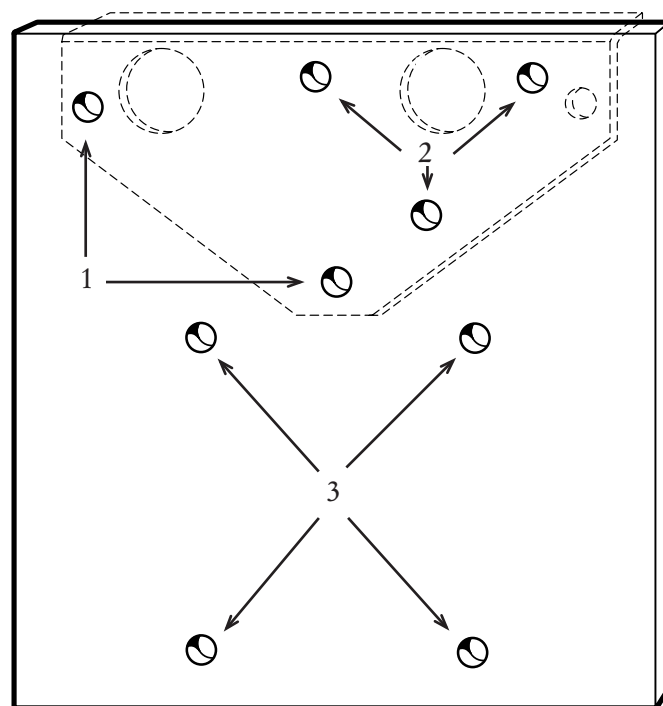


Fig 3

Note!

The hole on the long side of purge tank shall face down.

Plug the holes in the short end of purge tank (2) with plugs (12) and o-rings (11).

Assemble angular pipe fitting (7) in the purge tank (2) and direct it backwards.

Air connectors in the new air drier

See Fig 4 for porthole location.

Clean the threads and exchange o-rings (10) on connector (18) and (19).

Assemble connector (18) in porthole IN and connector (19) in porthole 21 in the new air drier.

Assemble angular pipe fitting (6) in porthole 22.

Assemble the pipe from compressor to connector (18) and the pipe which feeds the air system to connector (19).

Assemble one end of the 0,4m long pipe (17) in porthole 22 on the air drier, and the other end in angular fitting (7) at the purge tank.

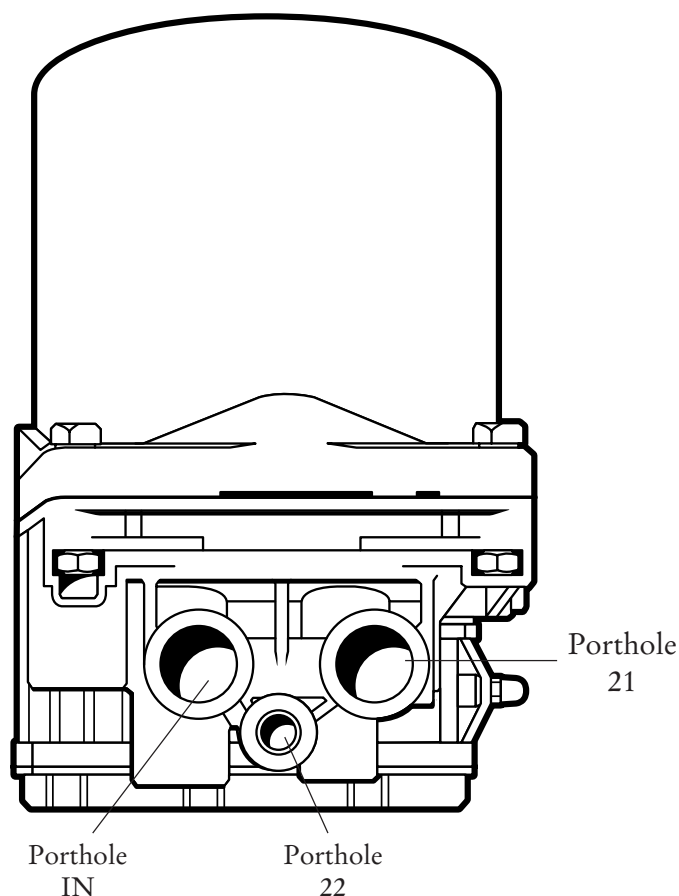


Fig 4

Other

Assemble the two pipes which were disconnected from the governor with each other. The pipes could be of either mm or inch size dimension. Use joint fitting and included parts in plastic bag marked (8) if mm and joint fitting with parts in plastic bag marked (9) if inch.

Fasten the pipes in a suitable place.

Isolate the cables and fasten them in a suitable place. The new air drier does not have any electrical connections.

Control**Function test**

Start the engine.

As the air drier reaches cut out, drain the system by pressing the brake pedal a couple of times until the compressor starts loading again. Check cut in and cut out pressure.

Leakage test

Check for air leaks with soap water.

Note!

The line between compressor and air drier and the line between purge tank and air drier are only pressurised during loading!

Other

Lower the cabin. Check that all details including pipes and cables do not get jammed, the cabins suspension included.

AUSTRIA

Haldex Wien Ges.m.b.H.
Vienna
Phone +43 1 8 65 16 40
Fax +43 1 8 65 16 40 27
e-mail: office@baeder-haldex.at

BELGIUM

Haldex N.V./S.A.
Zaventem (Brussels)
Phone +32 2 725 37 07
Fax +32 2 725 40 99
e-mail: info@hbe.haldex.com

BRAZIL

Haldex do Brasil
São Paulo
Phone +55 11 5034 4999
Fax +55 11 5034 9515
e-mail: info@hbr.haldex.com

CHINA

Haldex International Trading Co. Ltd.
Shanghai
Phone +86 21 6289 44 69
Fax +86 21 6279 05 54
e-mail: info@hcn.haldex.com

FRANCE

Haldex Europe S.A.
Weyersheim (Strasbourg)
Phone +33 3 88 68 22 00
Fax +33 3 88 68 22 09
e-mail: info@hfr.haldex.com

GERMANY

Haldex Brake Products GmbH
Denkendorf (Stuttgart)
Phone +49 711 934 9170
Fax +49 711 934 91740
e-mail: info@hde.haldex.com

Haldex Brake Products GmbH
Heidelberg
Phone +49 6221 7030
Fax +49 6221 70340
e-mail : info@hbpde.haldex.com

INDIA

Haldex India Limited
NASIK
Phone +91 253 38 73 62
+91 253 38 73 63
Fax +91 253 38 07 29

POLAND

Haldex Sp.z.o.o.
Praszka
Phone +48 34 350 11 00
Fax +48 34 350 11 11
e-mail: info@haldex.net.pl

SOUTH KOREA

Haldex Korea Ltd.
Seoul
Phone +82 2 2636 7545
Fax +82 2 2636 7548
e-mail: info@hkr.haldex.com

SPAIN

Haldex España S.A.
Parets del Valles (Barcelona)
Phone +34 93 573 10 30
Fax +34 93 573 07 28
e-mail: info@haldex.es

SWEDEN

Haldex Brake Products AB
Landskrona
Phone +46 418 47 60 00
Fax +46 418 47 60 01
e-mail: info@hbpse.haldex.com

UNITED KINGDOM

Haldex Ltd.
Newton Aycliffe
Phone +44 1325 310 110
Fax +44 1325 311 834
e-mail: info@huk.haldex.com

Haldex Brake Products Ltd
Redditch
Phone +44 1527 499 499
Fax +44 1325 311 834

USA

Haldex Brake Products Corp.
Kansas City MO
Phone +1 816 891 2470
Fax +1 816 891 9447
e-mail: info@hbpus.haldex.com



Haldex is an innovator in vehicle technology and supplies proprietary products for trucks, cars and industrial vehicles on a global basis.

Haldex is listed on the Stockholm Stock Exchange and has annual sales exceeding 6 billion SEK with 4,250 employees worldwide.



Innovative Vehicle Technology