

PRODUCT BULLETIN



Issued by
J Ralph

Introduction from serial No.

Date
18-12-2024

Product affected
EB+ Gen3

P/B No
0251M

Title / Subject
EB+ Gen3 compatible with TPMS 2.0

Reg No.
CN 03541

Edition / Ref. No.
Rev 02

Page
1 of 11

EB+ Gen3 compatible with TPMS 2.0

The Haldex TPMS 2.0 will be available for fitment with an EB+ Gen3 EBS from March 2025.

Compatibility behavior:

- Compatible with TPMS Lamp.
- Supports warning lamp on dashboard for TPMS warnings (low pressure/ high temperature / TPMS malfunction).
- No pressure values sent to the truck dashboard (to be implemented with future software update).

Note: A TPMS 2.0 installed on a EB+ Gen3 does not comply with R141 requirements.

There are two specific installation procedures:

- Retrofit – Initial installation of TPMS 2.0 to a trailer fitted with an EB+ Gen3 EBS.
- Replacement procedure – Replacing a TPMS 1.0 installed on a trailer fitted with an EB+ Gen3 EBS with a new TPMS 2.0.

Requirements for installation and correct operation:

- EB+ Gen3 software level E855 onwards
- Info Centre 2 (if installed) must be updated to software level G823.
- Mobile phone (Android operating system only)
- TPMS 2.0 Smartbox tool (part no. 815 063 001)

EB+ Gen3



TPMS 2.0



Mobile Phone
(Android operating
system)



TPMS 2.0
Smartbox tool
(815 063 001)

Issued by
J Ralph

Introduction from serial No.

Date
18-12-2024

Product affected
EB+ Gen3

P/B No
0251M

Title / Subject
EB+ Gen3 compatible with TPMS 2.0

Reg No.
CN 03541

Edition / Ref. No.
Rev 02

Page
2 of 11

Retrofit procedure – New TPMS 2.0 installation (trailer has no TPMS installed)

Step 1 – Check / update the EB+ Gen3 EBS to software level E855 onwards

1.1 Check that the Haldex DIAG+ software version 6.22 or later is available on site.
The latest DIAG+ version software can be downloaded from Trailer Application Guide section of Haldex web site: [Haldex | Software](#)

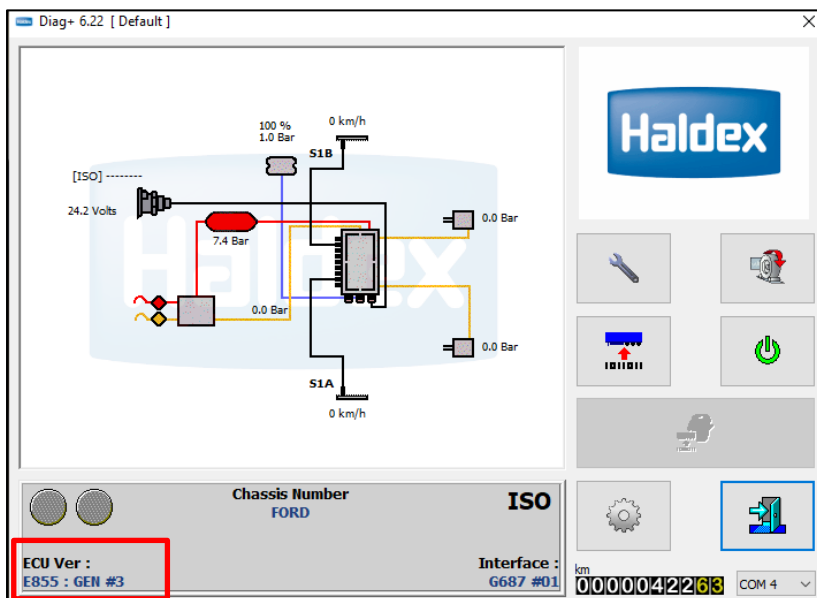
DIAG+

Diagnostic software tool for EBS and U-ABS systems.

- Requires a PC interface dongle part number [815 023 001](#).
- Driver for USB Dongle available [here](#)
- Serial Dongle no longer supported
- PC operating system: Windows XP - Vista - 7 - 8 - 10
- Supports multiple languages

[Download DIAG+ 6.22 →](#)

1.2 Using DIAG+ check the EB+ Gen3 software level



EB+ Gen3
software revision
is shown here

Issued by
J Ralph

Introduction from serial No.

Date
18-12-2024

Product affected
EB+ Gen3

P/B No
0251M

Title / Subject
EB+ Gen3 compatible with TPMS 2.0

Reg No.
CN 03541

Edition / Ref. No.
Rev 02

Page
3 of 11

1.3 If required, update the installed EB+ Gen3 with the software level E855 onwards. The latest EB+ Gen3 software can be downloaded from Trailer Application Guide section of Haldex web site: [Haldex | Software](#)

Flash update for EB+ Gen1 / Gen2 / Gen3

Detects the connected EB+ hardware and continues with the required software.

- C616 – GEN1 1M/2M
- C617 – GEN1 3M
- C618 – GEN2 2M/3M with MC (Atomic)
- D720 – GEN2 2M/3M with MC (FJ3)
- E855 – GEN3

Note: We have been notified of a number of GEN3 ECU's that cannot be re-flashed, which could affect units with software earlier than E707. After a failed re-flash attempt, the parts operate correctly with the original software.

Haldex recommends not flash-upgrading any of our EB+ products until Haldex advises them to do so.

[Download EB+ Flash update](#) →

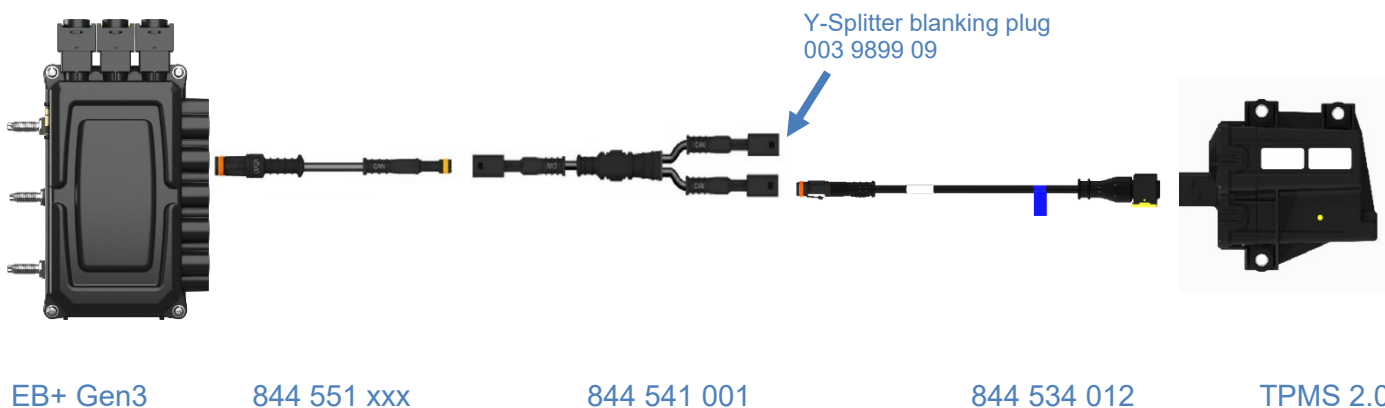
Step 2 – Install the TPMS 2.0 and connect to the EB+ Gen3

2.1 Refer to the TPMS 2.0 installation guide (006300062) for installation instructions.

2.2 Connect the TPMS 2.0 to the EB+ Gen3 using the assigned cables (see below example).

EB+ Gen3 to TPMS 2.0 AUX adaptor cables (basic installation)

- EB+ Gen3 to Y-Splitter - 844 551 xxx
- Y-Splitter - 844 541 001
- TPMS 2.0 to Y-Splitter – 844 534 012 (terminated)
- Y-Splitter blanking plug – 003 9899 09



Note: The Y-Splitter blanking plug (003 9899 09) must be fitted on any open cable connections

PRODUCT BULLETIN



Issued by
J Ralph

Introduction from serial No.

Date
18-12-2024

Product affected
EB+ Gen3

P/B No
0251M

Title / Subject
EB+ Gen3 compatible with TPMS 2.0

Reg No.
CN 03541

Edition / Ref. No.
Rev 02

Page
4 of 11

Step 3 – Configure the installed TPMS 2.0 using the TPMS 2.0 Smart DIAG Tool & Smart box

3.1 Refer to the TPMS 2.0 installation guide (006300062) for correct configuration procedure.

When TPMS 2.0 is fitted to the trailer, it is configured using the mobile Smart DIAG application.

Note: The mobile Smart DIAG application can only be used on Android devices. The software can be downloaded from the "Trailer Application Guide" follow:

1. Click here: [Haldex | Software](#)
2. Select mobile Smart DIAG application software
3. Download software

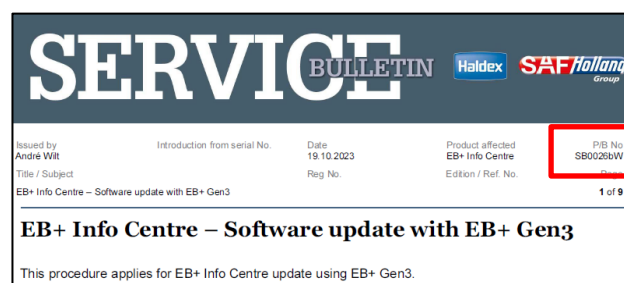
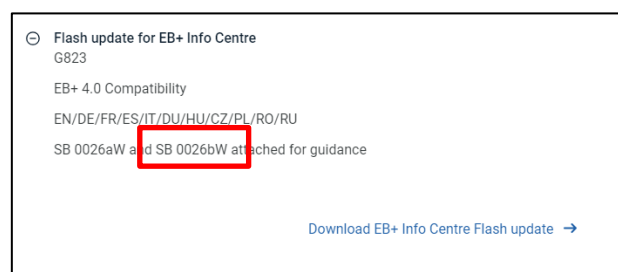
Step 4 – Update software to an installed EB+ Info Centre

If an EB+ Info Centre is fitted to the trailer, the EB+ Info Centre software will need updating to G823 onwards.

Update procedure:

4.1 Download the EB+ Info Centre service flash updater software G823 or later.
EB+ Info Centre service flash updater software G823 or later can be downloaded from Trailer Application Guide section of Haldex web site: [Haldex | Software](#)

4.2 Follow the instructions in service bulletin SB 0026bW (available with the EB+ Info Centre updater software).



For further information please refer to the TPMS 2.0 installation guide (006300062)

Issued by
J Ralph

Introduction from serial No.

Date
18-12-2024

Product affected
EB+ Gen3

P/B No
0251M

Title / Subject
EB+ Gen3 compatible with TPMS 2.0

Reg No.
CN 03541

Edition / Ref. No.
Rev 02

Page
5 of 11

Replacement procedure – Replacing an installed TPMS 1.0 with a new TPMS 2.0

Step 1 – Check / update the EB+ Gen3 EBS to software level E855 onwards

1.1 Check that the Haldex DIAG+ software version 6.22 or later is available on site. The latest DIAG+ version software can be downloaded from Trailer Application Guide section of Haldex web site: [Haldex | Software](#)

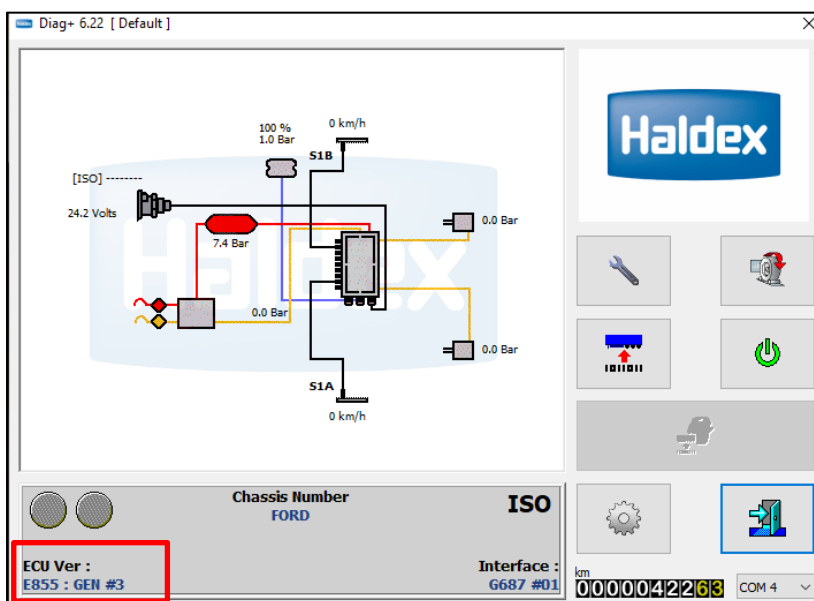
DIAG+

Dagnostic software tool for EBS and U-ABS systems.

- Requires a PC interface dongle part number [815 023 001](#).
- Driver for USB Dongle available here
- Serial Dongle no longer supported
- PC operating system: Windows XP - Vista - 7 - 8 - 10
- Supports multiple languages

[Download DIAG+ 6.22 →](#)

1.2 Using DIAG+ check the EB+ Gen3 software level



EB+ Gen3
software revision
is shown here

Issued by
J Ralph

Introduction from serial No.

Date
18-12-2024

Product affected
EB+ Gen3

P/B No
0251M

Title / Subject
EB+ Gen3 compatible with TPMS 2.0

Reg No.
CN 03541

Edition / Ref. No.
Rev 02

Page
6 of 11

1.3 If required, update the installed EB+ Gen3 with the software level E855 onwards. The latest EB+ Gen3 software can be downloaded from Trailer Application Guide section of Haldex web site: [Haldex | Software](#)

⊖ Flash update for EB+ Gen1 / Gen2 / Gen3

Detects the connected EB+ hardware and continues with the required software.

- C616 – GEN1 1M/2M
- C617 – GEN1 3M
- C618 – GEN2 2M/3M with MC (Atomic)
- D720 – GEN2 2M/3M with MC (FJ3)
- E855 – GEN3

Note: We have been notified of a number of GEN3 ECU's that cannot be re-flashed, which could affect units with software earlier than E707. After a failed re-flash attempt, the parts operate correctly with the original software.

Haldex recommends not flash-upgrading any of our EB+ products until Haldex advises them to do so.

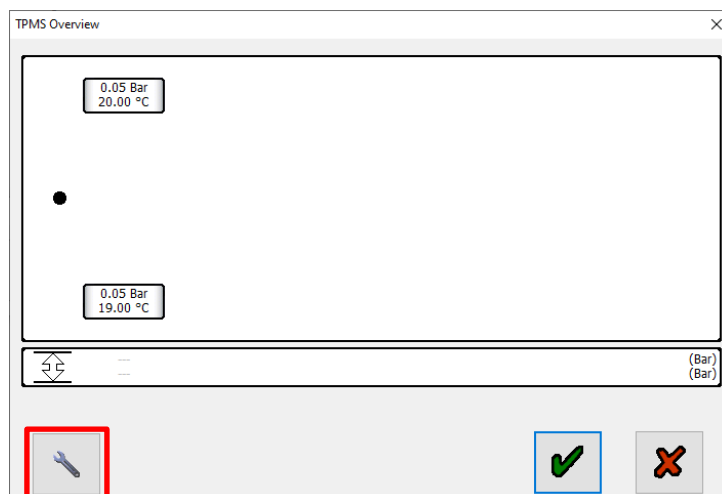
[Download EB+ Flash update](#) →

1.4 Remove the TPMS 1.0 from the trailer.

Note: Any previously installed TPMS 1.0 must be deconfigured (disabled) using DIAG+ before a TPMS 2.0 is installed.

How to deconfigure:

1.4.1 In the TPMS Overview screen press the “Spanner” button to show the TPMS 1.0 setup screen



Issued by
J Ralph

Introduction from serial No.

Date
18-12-2024

Product affected
EB+ Gen3

P/B No
0251M

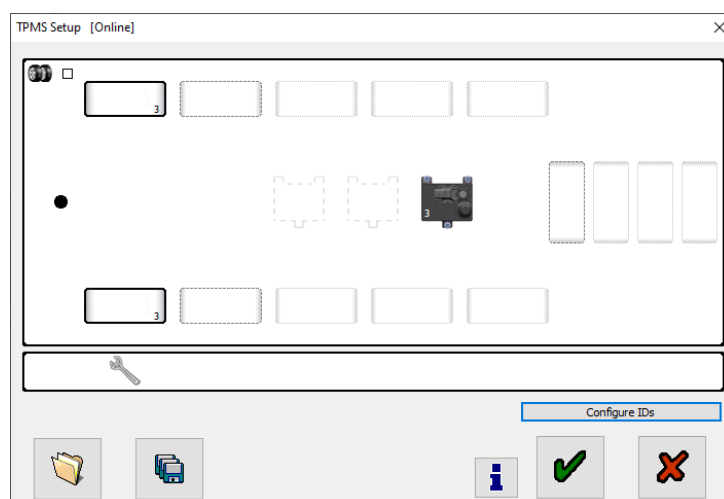
Title / Subject
EB+ Gen3 compatible with TPMS 2.0

Reg No.
CN 03541

Edition / Ref. No.
Rev 02

Page
7 of 11

1.4.2 Setup screen showing installed TPMS 1.0

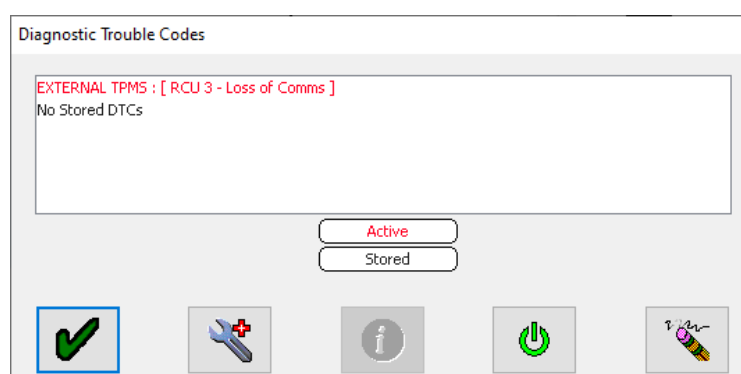


1.4.3 Switch 'off' the power to the trailer / EBS

1.4.4 Disconnect the TPMS 1.0 from the trailer / EB+ Gen3 EBS

1.4.5 Switch 'on' the power to the trailer / EBS

1.4.6 The following active DTC (RCU number may be different) will be seen.



PRODUCT BULLETIN



Issued by
J Ralph

Introduction from serial No.

Date
18-12-2024

Product affected
EB+ Gen3

P/B No
0251M

Title / Subject
EB+ Gen3 compatible with TPMS 2.0

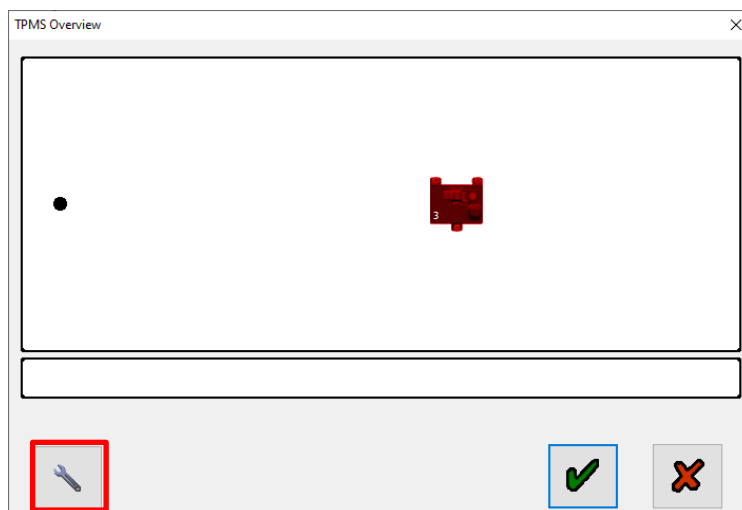
Reg No.
CN 03541

Edition / Ref. No.
Rev 02

Page
8 of 11

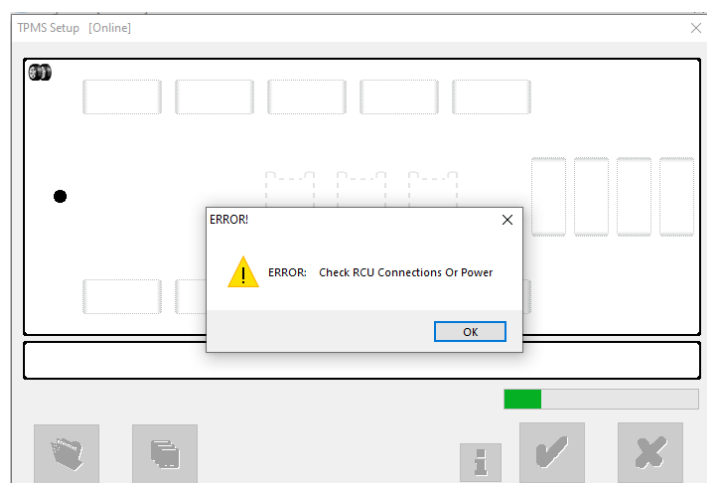
1.4.7 TPMS Overview screen will show like this.

Click “Spanner” button to enter TPMS Setup screen.



1.4.8 The following ERROR screen will be shown.

Click “OK” button



Issued by
J Ralph

Introduction from serial No.

Date
18-12-2024

Product affected
EB+ Gen3

P/B No
0251M

Title / Subject
EB+ Gen3 compatible with TPMS 2.0

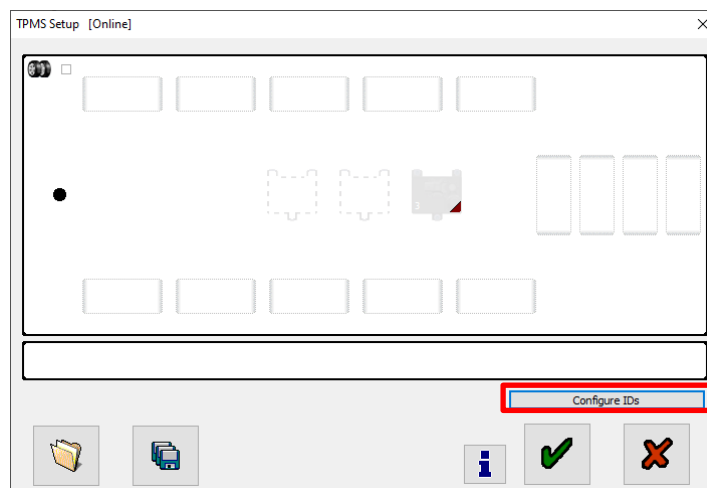
Reg No.
CN 03541

Edition / Ref. No.
Rev 02

Page
9 of 11

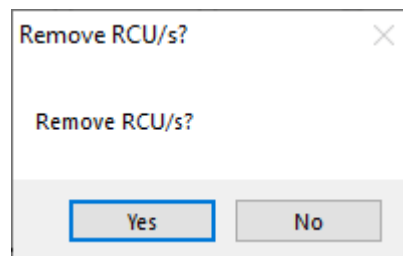
1.4.9 The TPMS Setup screen will then be shown

Click "Configure IDs" button,



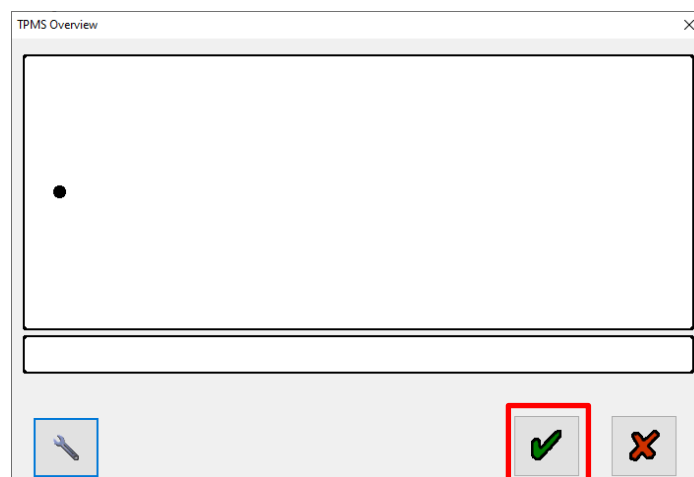
1.4.10 The following screen will then be shown.

Click "Yes" button. TPMS 1.0 will be de-configured, EB+ Gen3 will then be reset.



1.4.11 TPMS Overview screen will show like this.

Click "tick" button to exit the TPMS Overview screen.



PRODUCT BULLETIN



Issued by
J Ralph

Introduction from serial No.

Date
18-12-2024

Product affected
EB+ Gen3

P/B No
0251M

Title / Subject
EB+ Gen3 compatible with TPMS 2.0

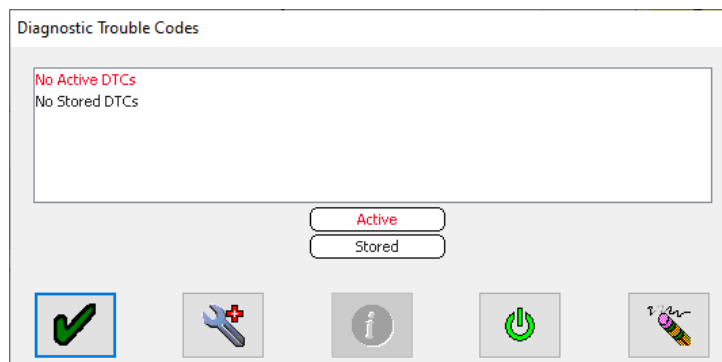
Reg No.
CN 03541

Edition / Ref. No.
Rev 02

Page
10 of 1'

1.4.12 The previous active TPMS DTC will have been cleared.

TPMS 1.0 is now disconnected and deconfigured.



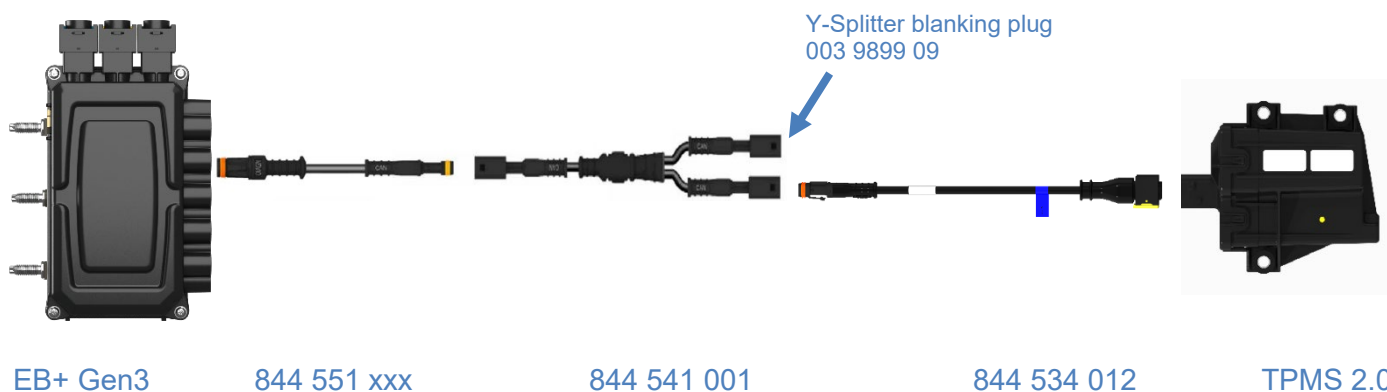
Step 2 – Install the TPMS 2.0 and connect to the EB+ Gen3

2.1 Refer to the TPMS 2.0 installation guide (006300062) for installation instructions.

2.2 Connect the TPMS 2.0 to the EB+ Gen3 using the assigned cables (see below example).

EB+ Gen3 to TPMS 2.0 AUX adaptor cables (basic installation)

- EB+ Gen3 to Y-Splitter - 844 551 xxx
- Y-Splitter - 844 541 001
- TPMS 2.0 to Y-Splitter – 844 534 012 (terminated)
- Y-Splitter blanking plug – 003 9899 09



Note: The Y-Splitter blanking plug (003 9899 09) must be fitted on any open cable connections

PRODUCT BULLETIN



Issued by
J Ralph

Introduction from serial No.

Date
18-12-2024

Product affected
EB+ Gen3

P/B No
0251M

Title / Subject
EB+ Gen3 compatible with TPMS 2.0

Reg No.
CN 03541

Edition / Ref. No.
Rev 02

Page
11 of 1'

Step 3 – Configure the installed TPMS 2.0 using the TPMS 2.0 Smart DIAG Tool & Smart box

3.1 Refer to the TPMS 2.0 installation guide (006300062) for correct configuration procedure.

When TPMS 2.0 is fitted to the trailer, it is configured using the mobile Smart DIAG application.

Note: The mobile Smart DIAG application can only be used on Android devices. The software can be downloaded from the "Trailer Application Guide" follow:

1. Click here: [Haldex | Software](#)
2. Select mobile Smart DIAG application software
3. Download software

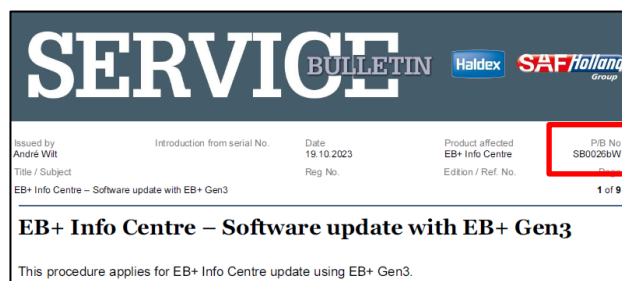
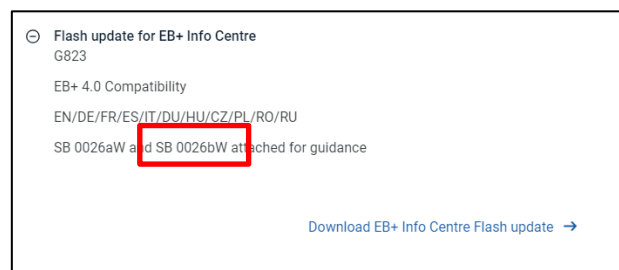
Step 4 – Update software to an installed EB+ Info Centre

If an EB+ Info Centre is fitted to the trailer, the EB+ Info Centre software will need updating to G823 onwards.

Update procedure:

4.1 Download the EB+ Info Centre service flash updater software G823 or later
EB+ Info Centre service flash updater software G823 or later can be downloaded from Trailer Application Guide section of Haldex web site: [Haldex | Software](#)

4.2 Follow the instructions in service bulletin SB 0026bW (available with the EB+ Info Centre updater software).



For further information please refer to the TPMS 2.0 installation guide (006300062)