

# Double Check Valve

Haldex

## Technical Information



### Double check valve

Double check valve with „select low“ function transfers the lower pressure signal of both incoming signals at ports 11 and 21 to the delivery ports 2. The typical application is on self steer axle on towed vehicles whereby the (lower) brake pressure generated by i.e 2M ABS or EBS during brake application will pass the valve and apply the brakes on indirectly controlled axle (s). The „select low“ double check valve is also known as so called „AND“ double check valve. Beside applications within a brake system it can be used for any other applications within pneumatic circuits wherever the lower pressure priority is required.

## Double check valve with „select low“ function

### Advantages

- The AI block design incorporate all necessary ports without any need for an additional T-Fitting or a distribution block.
- Reduced installation efforts.
- Robust design, corrosion protected.
- Applicable in all towed vehicles with self steer axles.

## Use

The typical application is on self steer axle on towed vehicles whereby the (lower) brake pressure generated by i.e 2M ABS or EBS during brake application will pass the valve and apply the brakes on indirectly controlled axle (s).

## Technical data

Operating pressure	pe max 10.0 bar
Operating temperature	-40°C to +80°C
Medium	Air
Nominal diameter	DN 10
Mounting position	ports 11 & 12 horizontal

## Port description

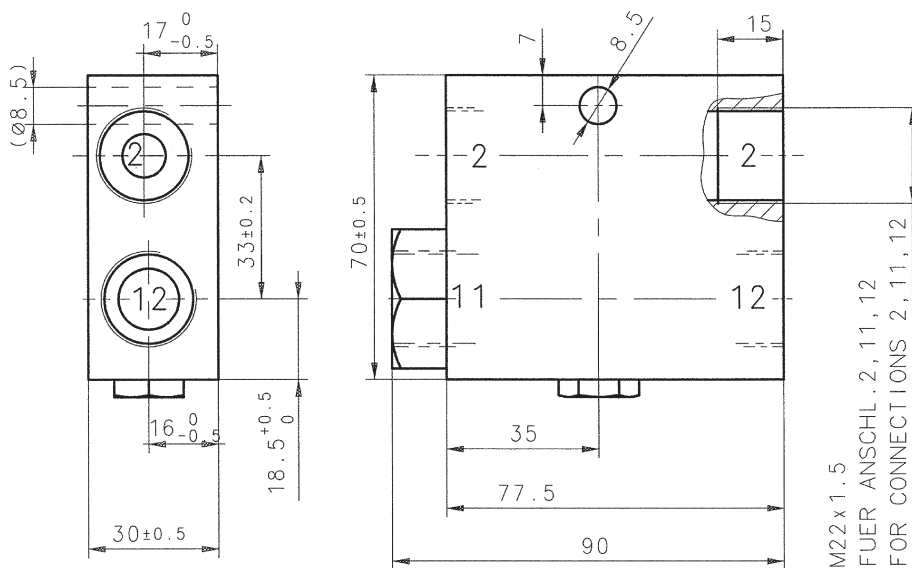
- 11 = Inlet Port, M22 x 1.5
- 12 = Inlet Port, M22 x 1.5
- 2 = Delivery Port, M22 x 1.5

## Versions

**333 009 001**

**Replacement for 833 999 999**

## Dimensions 333 009 001



## Symbol 333 009 001

## SYMBOL

