

Technical Information



Haldex Trailer Control Module

parking and release valve with integrated emergency brake valve for the service brake system, as well as a pressure protection valve for auxiliary devices (e.g. air suspension) for twin-line air brake equipment in towed vehicles. The TrCM has a flange-fitted release valve and a parking valve for the service brake and the spring brake.

In particular, the Trailer Control Module satisfies the requirements of EEC Braking Systems Directive 71/320 and ECE Regulation R 13.

The Trailer Control Module from Haldex “without check valve”

Benefits

- The emergency brake function is effected by the service brake while at the same time maintaining the ABS function in combination with the ABS/EB⁺ systems available on the market.
- Parking and release function using the integrated control buttons parking and release valve.
- Pressure protection valve for the air suspension system or other auxiliary devices.
- Can be used in all trailer vehicles with ABS and EB⁺.
- Weight reduction, reduced number of bolts and pipelines.

Use

- Semi-trailers
- Centre axle trailers
- Full trailers

with:

- Service brake circuit and spring-actuated parking brake
- EB+ (EBS), all systems
- ABS, all systems
- Supply to auxiliary devices via integrated pressure protection valve

Technical data

Operating pressure	$p_e = 10$ bar
Operating temperature	-40°C - +70°C
Weight	approx. 1.8 kg
Medium	Air

Pressure protection valve C 6 - 22

Opening pressure:	$p_e = 6.2$ bar
Closing pressure:	$p_e = 5.2$ bar

TÜV Rep.No. KO 250.3

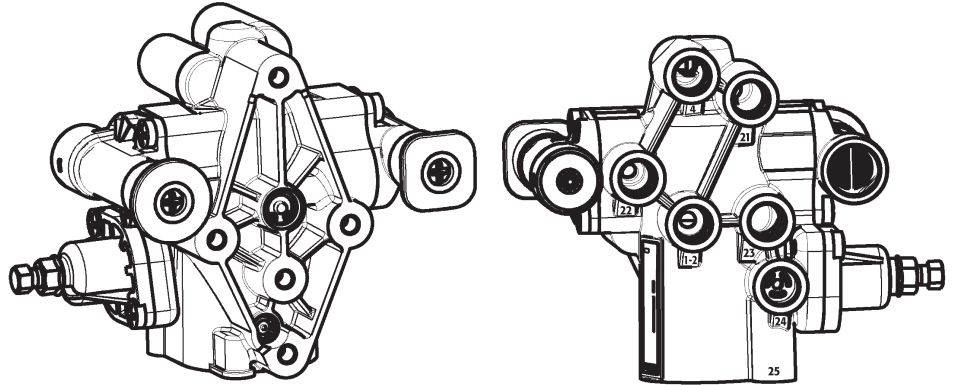
Port designations

- 1 = supply port (palm coupling supply)
- 1-2 = supply/delivery port (reservoir)
- 3 = exhaust (spring brake)
- 4 = control port (service coupling)
- 21 = delivery port (EBS/ABS)
- 22 = delivery port (spring brake)
- 23, 24, 25 = delivery port (pressure protection valve)

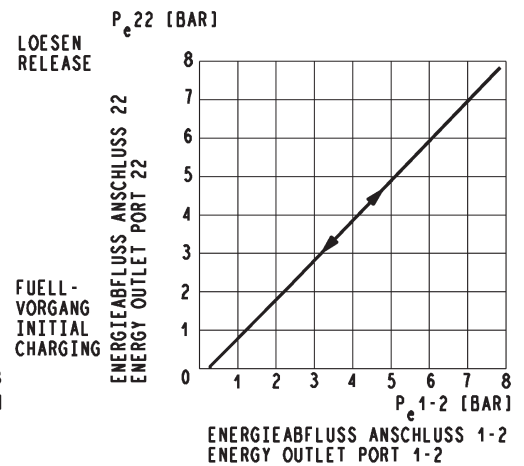
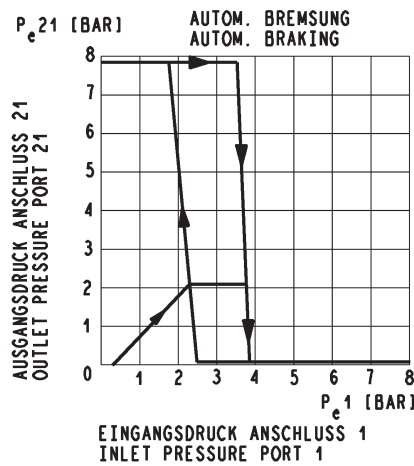
Versions

352 067 1.. Instruction plate 028 0443 09 is supplied loose

Dimensions 352 067 1..



Function diagram 352 067 1..



DIN ISO 1219 function symbol

