

Issued by
Joachim Hansson

Introduction from serial No.

Date
2010-04-30

Product affected
ModulX

P/B No
DB 025L

Title / Subject
INTRODUCTION OF THE NEW
COMPOSITE SLIDE BEARING

Reg No.
20087508

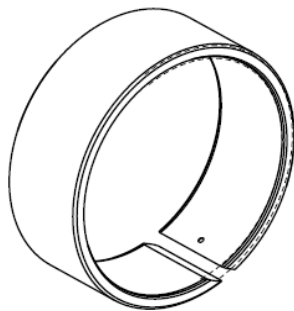
Edition / Replaces
01

Page
1/1

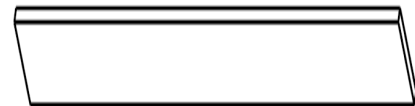
Introduction of the new composite slide bearing

The PTFE band P/N 81870, presently used in all the ModulX brakes as the slide pin bearing, will be replaced by a slide bearing made from composite material P/N 94286.

The new design enables a faster, safer and more accurate assembly with its snap-in solution, and it eliminates the need for the special tool; assembly cone sliding band, P/N 81921.



New composite slide bearing, P/N 94286



Current PTFE band, P/N 81870

The change will be made in all Bill of Materials for complete brakes from the 3rd May 2010. The slide bearing will also replace the PTFE band in all spare part kits. The change over to the composite bearing for spare part kits will be phased over a longer time period. Once the stock of the old PTFE band slide bearings is exhausted they will be replenished with composite slide bearings.

This includes the spare part kits for the MK II, III and IV since the current PTFE band and the new composite slide bearings are interchangeable. Old brakes with the PTFE band can be fitted with the new slide bearing and vice versa.

The introduction of the new composite slide bearing will have an effect on the assembly procedure and therefore this product bulletin will be accompanied by a service bulletin, describing the new assembly procedure.