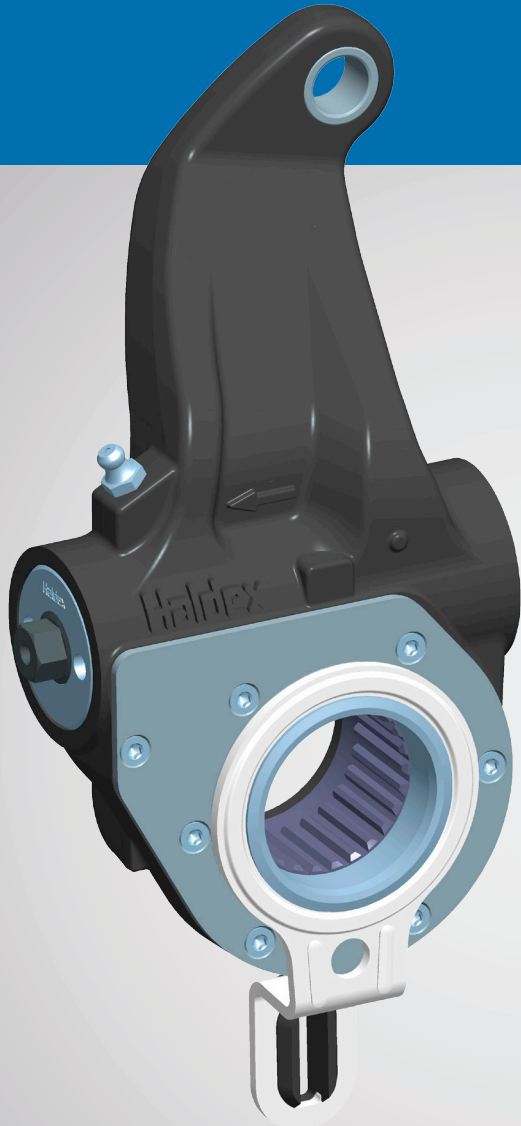


# TECHNICAL INFORMATION



**Haldex S-ABA – is a self setting Automatic Brake Adjuster for the global commercial vehicle market. Manufactured in Sweden, USA, India, China and Brazil. Haldex S-ABA, now in an upgraded version.**

## **New features offered**

- › Improved sealing
- › Optimized casting
- › Fine-tuned adjustment accuracy
- › Environmental friendly

## **Still with remained features**

- › Free selection of control arm position
- › Error-free installation

## **S-ABA and LWS**

The upgraded S-ABA is provided with improved sealing around front and rear cover. This is done by dry sealing that also serve as a locking function. The rear cover will have a grease relief valve for secure grease filling added in the bottom of the Allen key grip.

Where applicable, optimized castings will be introduced. Redistribution of the casted material will provide further improvement on fatigue life of the housing and thus reduce weight.

The clearance sensing adjustment function has been fine-tuned offering an even better accuracy in clearance setting and free stroke control. This is especially important when having varying tolerances in the surrounding foundation brake components.

## **Haldex Lining Wear Sensor**

Haldex S-ABA is designed with wear monitoring in mind. Together, the Haldex S-ABA and Electronic Lining Wear Sensor provide continuous information on brake lining wear.



**Innovative Vehicle Solutions**



## S-ABA / LWS

### Technical data S-ABA

- › Input load acc. to SAE J1462, rated torque 2600 Nm.
- › Maximum recommended release torque at 90° rotation of the S-cam shaft is 20 Nm.
- › De-adjustment torque on new ABA is minimum 32 Nm. Replacement limit 18 Nm.
- › Maximum allowed flexing / S-cam bushing play exposed to control arm is 0,5 mm in total.
- › ABA axial clearance on S-cam spline 0,5-2,0 mm.
- › Automatic lubrication system: Std. auto-lube liquid-grease is approved. Maximum input 0,1 - 0,2 cm<sup>3</sup> / 3 - 6 hrs.
- › ABA operating temperature range: - 40 to +80°C. Peak temperature +110° C.

### Technical data LWS

- › Mechanical operating travel is max 120 degrees
- › Supply voltage 5V +10%
- › Output signal value 0,5 to 4,0V
- › Output characteristics: Ratio metric
- › Output current +5mA
- › Max supply current 10mA
- › LWS operating temperature range: -40° C to +125° C
- › Sealing acc. To IP 69K

# Design and function

## Installation drawing

