

Levelling Valve



Haldex Levelling valve with lap position control

The concept of the levelling valves with plastic housings (**EGP** = **E**ngineering **G**rade **P**lastic) with cross restriction has proven as good since the introduction a few years ago to the fullest customer satisfaction. Now this concept is completed through a further innovative development - a levelling valve with lap position control.

Advantage

- Components from technical plastic (EGP) are corrosion protected

Lap position control makes possible:

- „Kneeling“ at busses (one-sided lowering of the chassis) for more comfortable boarding- /deboarding of passengers

- 2nd ride heights at vehicles with lift axles, so that at lifted axle the wheel gets by passing through a ground wave no touch of the ground and is subject to thus no increased tire wear

- Adjustment for different king pin heights, improved handling for fleet operators

- Cross restriction between port 21 and 22 for the bellows left / right side



Introduction

The levelling valve is installed as a height control valve for load dependant control of the air volume in the air bellows on vehicles with air suspension. Thereby, according to the version, additional functions, such as 2. ride height, through a lap position control are possible.

Assembly instructions

The levelling valve has to be installed vertically with the exhaust facing down. For fixing use at least two M 8 screws. On applications with only one valve per bogie the valve must be fastened in the area of the middle of the axle.

Technical data

Operating pressure	$p_e = \text{max. } 13 \text{ bar}$
Operating temperature	$-40^\circ\text{C} - +80^\circ\text{C}$
Bellow pressure	$p_e = \text{max. } 20 \text{ bar}$
Operating range	45°
Side of control	left and right
Port description	

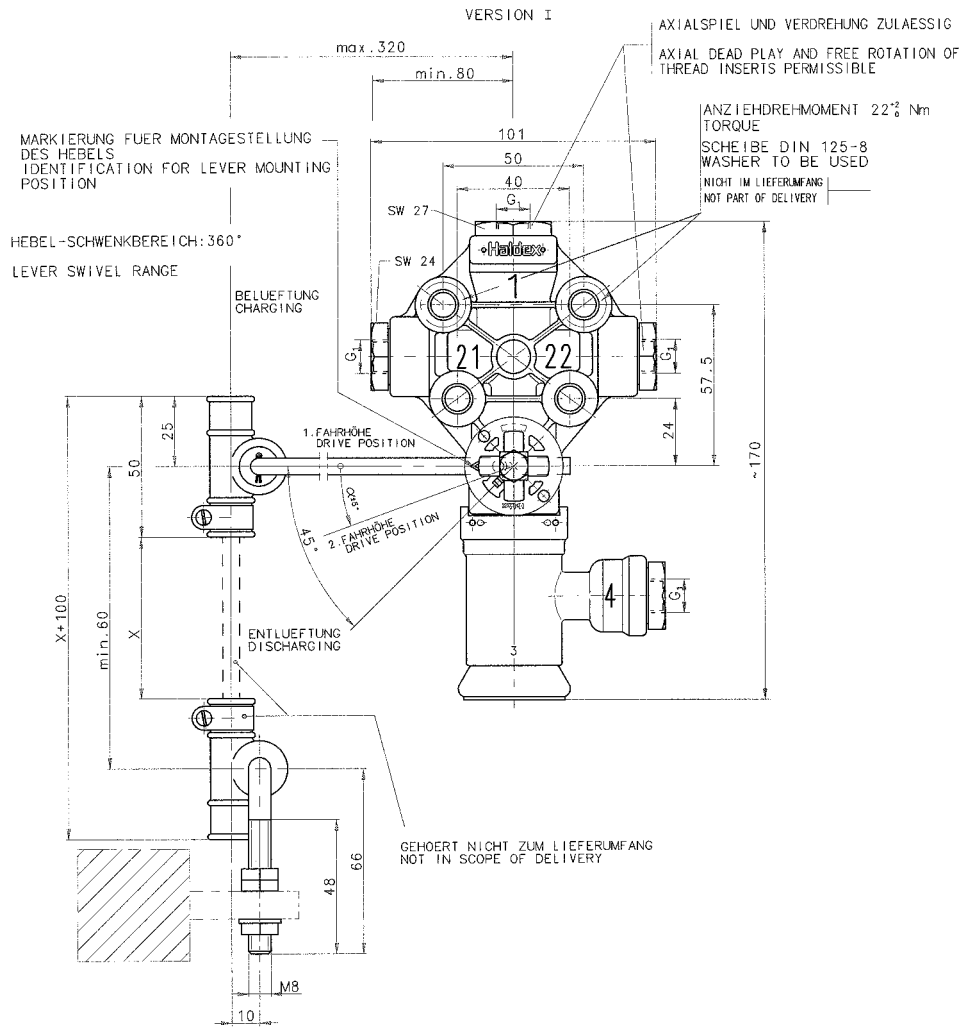
- 1 = inlet port
- 4 = control port
- 21 = delivery port
- 22 = delivery port
- 3 = exhaust

Versions

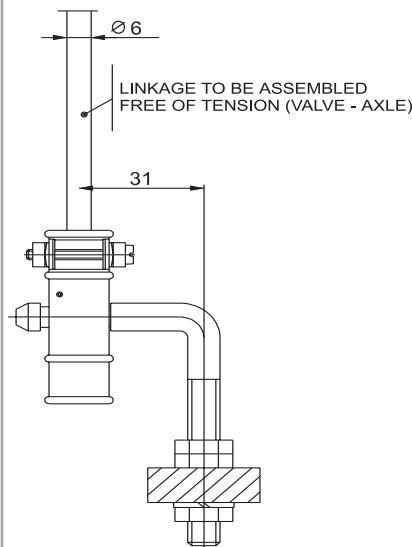
612 046 111	Push-in fitting
612 046 141	1/4"-18 NPTF
612 046 151	M12 x 1.5

More versions on request

Dimensions 612 046 0..



at axle
612 025 001



at valve
003 5757 09



Whatever IT TAKES

Haldex Brake Products GmbH
69123 Heidelberg, Mittelgewannweg 27
Tel. +49-6221 70 30, Fax +49-6221 703 254
e-mail: info@hbpde.haldex.com