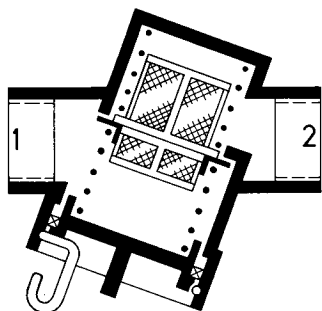


Line Filter

Part-No.: 310 005 011

Application

The line filter is installed in air brake systems. It cleans the compressed air, thereby protecting the equipment from faults and defects. The brake system remains operable in both directions, even when the filter element is clogged.



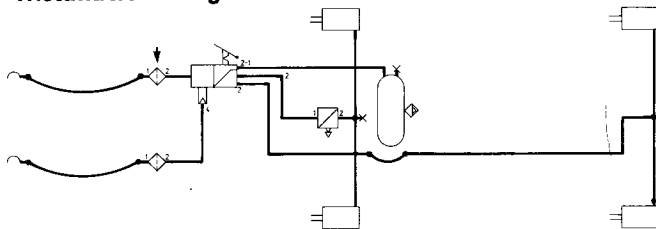
Installation

The line filter is installed in the pipeline so that the hook-type snap ring faces downwards. Sufficient space for removing the filter insert must be left beneath the line filter. The direction of flow is arbitrary, however, flow from 1 to 2 is preferred.

Function

The filter element comprises a plastic sump reinforced by longitudinal ribbing and a sealing seat. Two springs firmly hold the filter element in position. If the filter element is clogged, the filter lifts from its seat and the compressed air flow unfiltered through the line filter.

Installation Diagram



Maintenance

The filter element should be cleaned at regular intervals. The filter element can be removed by pressing in the cover and releasing the hook-type snap ring without it being necessary to disconnect the line filter by screwing it out of the line.

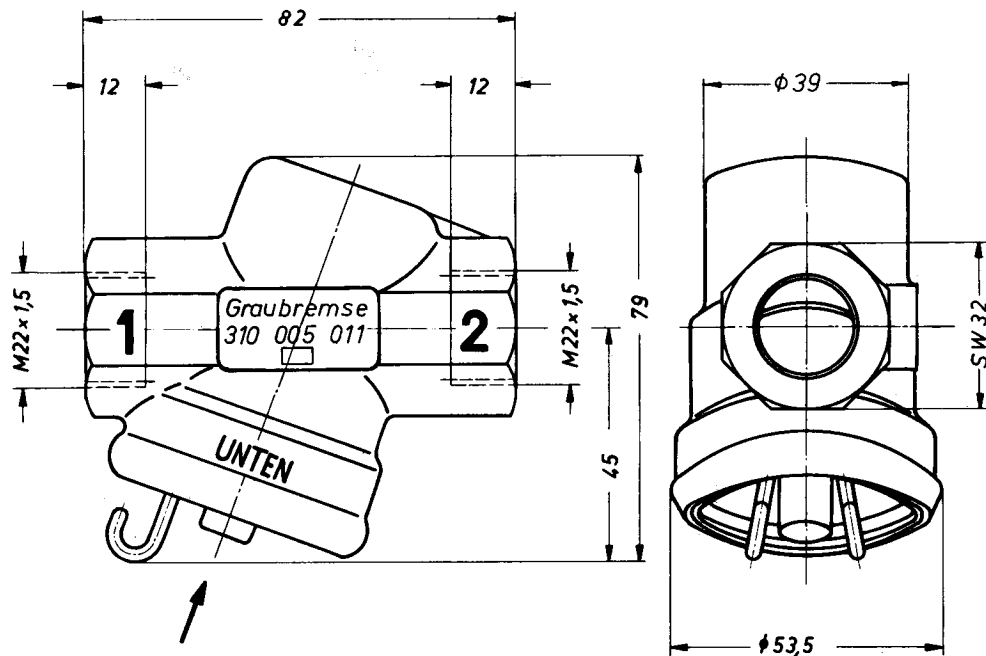
Checking

Check the line filter for clogging and leaks.

Installation Drawing

Drawing symbol in accordance with DIN 74253

Function symbol in accordance with DIN ISO 1219



Press-in cover when fitting and removing the snap ring. Preferable direction of flow from 1 to 2.

Operating pressure: $p_e = 10 \text{ bar}$

These installation instructions correspond to the knowledge and experience gained at the time of printing and are subject to revision in the event of modification. GRAUBREMSE shall not be liable for applications which are not included in these installation instructions. Such cases require special enquiry. All rights to changes as a result of technical modification reserved. Reprint, also by way of extract, only with our express permission. Not subject to revision.