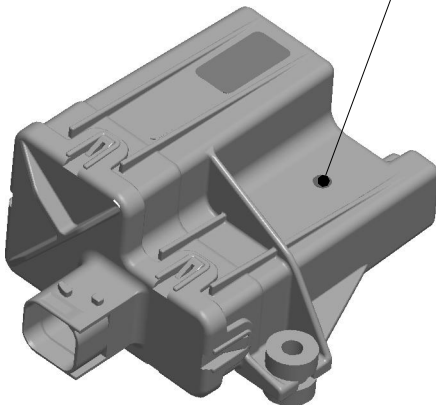


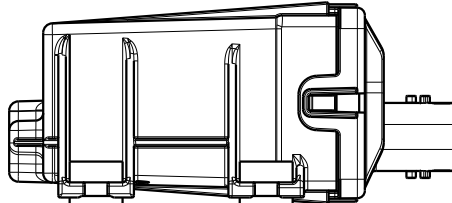
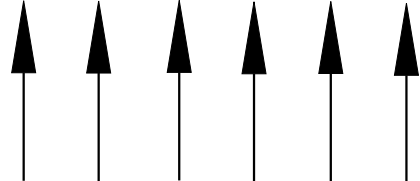
THIS DOCUMENT IS THE PROPERTY OF THE HALDEX GROUP, AND CONTAINS CONFIDENTIAL AND PROPRIETARY INFORMATION THAT CANNOT BE REPRODUCED, UTILIZED OR DIVULGED, IN WHOLE OR IN PART, WITHOUT WRITTEN AUTHORIZATION

REV	CHANGE DESCRIPTION AND ORDER NUMBER	DATE	CHANGED	CHECKED	APPROVED
00	02267 - RELEASE OF CUSTOMER DRAWING	2022-07-11	KW 164	MH060	MH060

YELLOW MARKING POINT  
= MANUAL CONFIG





NO METALLIC SHIELD IN THIS DIRECTION



INSTALLATION INFORMATION  
1:2

NOTES.  
1. ALL PAINT SPLASHES ON THE RCU ARE PROHIBITED.  
IN THE CASE OF PAINTING OR APPLICATION OF "BLACKSON",  
PLEASE PROTECT THE RCU BEFOREHAND

1. Operation Temperature	-40°C to +85°C
2. Storage Range Temperature	-20°C to +60°C
3. Water Resistance	IP69K and IP67
4. Normal Current	30mA (max)
5. Maximum Current	1.5A (peak)
6. Hardware Revision	C2
7. Type of Signal	Analog
8. Wetting / Cleansing Current	NA
9. Connector Pin's Plating Material	Material: CuSn Half Hard H12 Surface Treatment: SN 7.5um±1um

TOLERANCE UNLESS OTHERWISE SPECIFIED -	DOC TYPE PART	SCALE 1:2	MATERIAL RCU HOUSING AND COVER: PBT GF30			
<div>THIS DOCUMENT USES SPECIAL CHARACTERISTICS AS DEFINED IN PROCEDURE HDX2-3-364</div>	DRAWN KW 164	DATE 2022-07-11	WEIGHT [ONLY FOR INFO.] 0.14 kg		DIMENSION IN mm DO NOT SCALE DRAWING	
	CHECKED MH060	DATE 2022-11-03	TITLE TPMS RCU 2 MANUAL CONFIG CUSTOMER DRAWING			
<div> HALDEX BRAKE PRODUCTS LTD MIRA TECHNOLOGY PARK</div>	APPROVED MH060	DATE 2022-11-23	ITEM NUMBER 815_058_000_2		PROJECTION 	SHEET 1(1) FORMAT A3

GENERIC MODEL (INFO ONLY): 815\_058\_001