

Issued by Richard Karlsson	Introduction from serial No. All	Date Aug 29, 2014	Product affected ModulT ADB	P/B No DB 010E
Title / Subject Check of ModulT ADB Adjustment Unit	Reg No. HDX1-95-107	Edition / Ref. No. 01	Page 1 of 2	

Check of ModulT ADB Adjustment Unit

The Haldex ModulT Service Manual states the importance of regular ADB function checks to ensure continued correct braking function in operation. This Service Bulletin is published to highlight the importance of this specific service check and if not already performed, it is recommended this check is carried out at the next available planned vehicle workshop visit. Failure to do so could compromise the continued correct ADB braking function in operation.

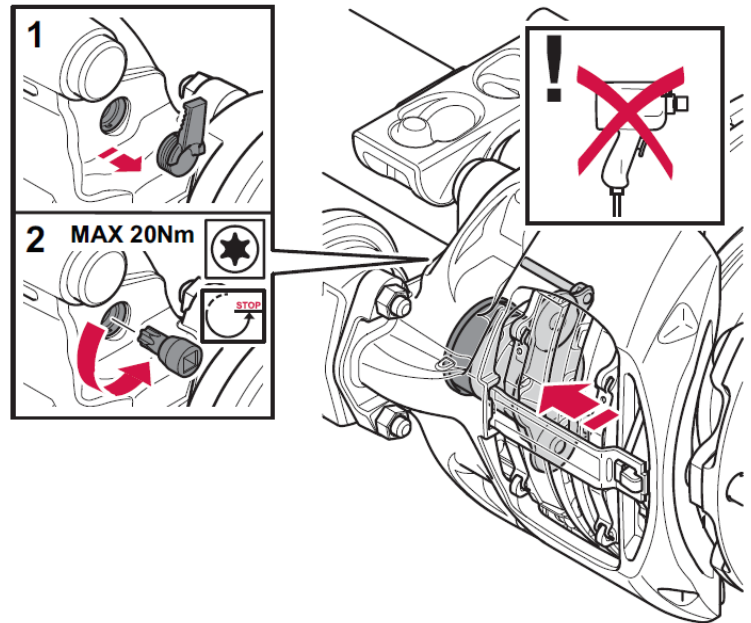
The function test can be carried out with the wheel either fitted or removed. See the Service Manual for full instructions and illustration references (3.3.1 Check of Adjustment Unit).

Check of adjustment unit, ModulT:

1. Remove the reset shaft protection plug.
2. Using Haldex special tool P/N 95232 (Torx 55), manually turn the reset shaft anticlockwise to de-adjust the brake so that the thrust plate fully retracts to its inner position.

A distinct clicking sound shall be heard and felt when de-adjusting.

The stop at fully retracted inner thrust plate position must be distinct, but do not exceed 20 Nm in torque or leave it tightened in this position.



If the end stop can't be reached or if a distinct clicking sound can't be heard, then mechanism unit is faulty and the complete brake needs to be replaced.

Issued by Richard Karlsson	Introduction from serial No. All	Date Aug 29, 2014	Product affected ModulT ADB	P/B No DB 010E
Title / Subject Check of ModulT ADB Adjustment Unit	Reg No. HDX1-95-107	Edition / Ref. No. 01	Page 2 of 2	

Final Procedure

1. Using Haldex special tool P/N95232 (Torx 55), manually adjust the brake by turning the reset shaft clockwise until the pads touch the disc and you feel an end stop.
2. Then turn the reset shaft anti-clockwise by 2 clicks, see figure 9.1. This procedure is the initial brake pad setting.

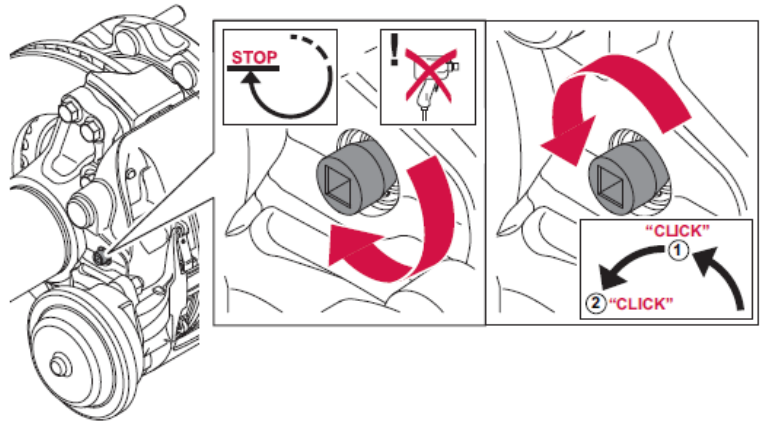


Figure 9.1. Initial brake pad setting

3. Fit the reset shaft protective plug into the calliper, ensure it is correctly orientated and pushed fully into its correct sealing position.

Failure to do so may compromise the life of the brake!

See Figure 10.

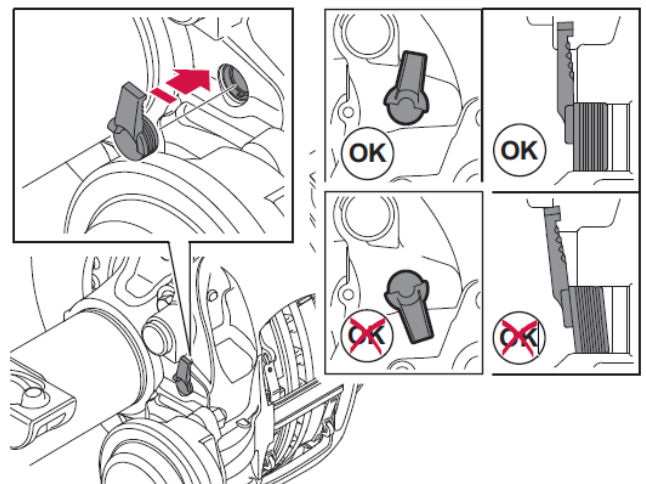


Figure 10. Correct fitment of the protective plug