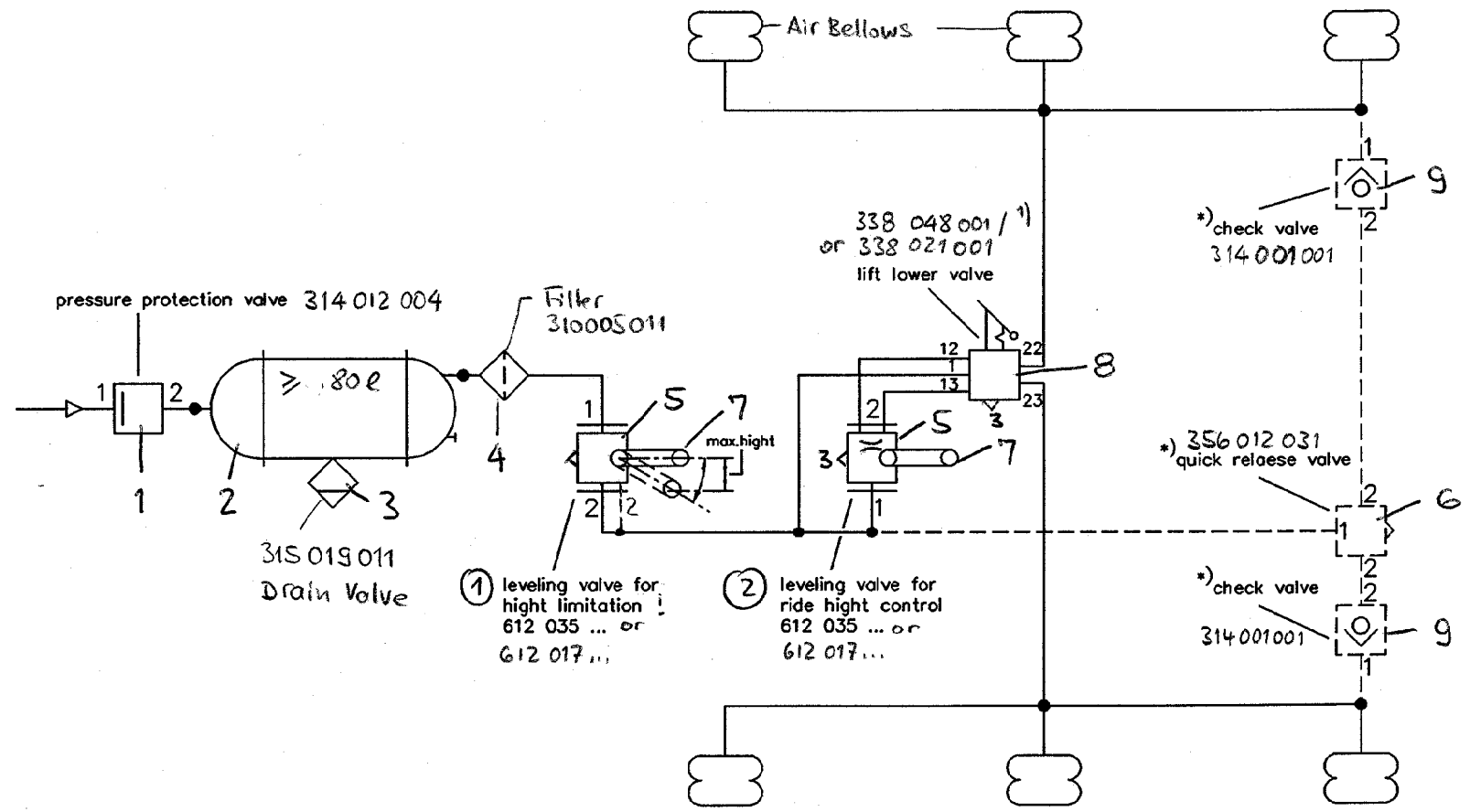


air suspension system with hight limitation \*)  
with lift lower valve  
via 2. levelling valve

380 086 261

Page No. 2 Page: 1

symbols : DIN 74253



\*) option : quick release valve & check valves  
for rapid exhaust !

Attention : **TAKEN OUT (!)** COLAS W. RESET TO RIDE HIGHT / Throttle

380 086 261 (14)

designed : 14.6.93  
checked : *[Signature]*



air suspension system with hight limitation \*)  
with lift lower valve

via 2. levelling valve

380 086 267

Page No. 2 Page 2

Pos.	Qty.	Benennung / DESCRIPTION	Order -No.
1	1	PRESSURE PROTECTION VALVE	314 012 ...
2	1	AIR RESERVOIR , .. 1.	030 .... 09
3	1	DRAIN VALVE	315 019 001
4	1	PIPE FILTER	310 005 011
5	2	LEVELLING VALVE	612 035 ...
6	1	QUICK RELEASE VALVE 356 023 011 or	356 012 031
7	2	ACTUATING LEVER	612 025 001
8	1	WL - VALVE <sup>1)</sup> 338 021 001 or	338 048 001
9	2	CHECK- VALVE	314 001 001
		<sup>1)</sup> NO COLAS W. RESET TO RIDE HEIGHT (w. By-Pass -Throttle) !	