



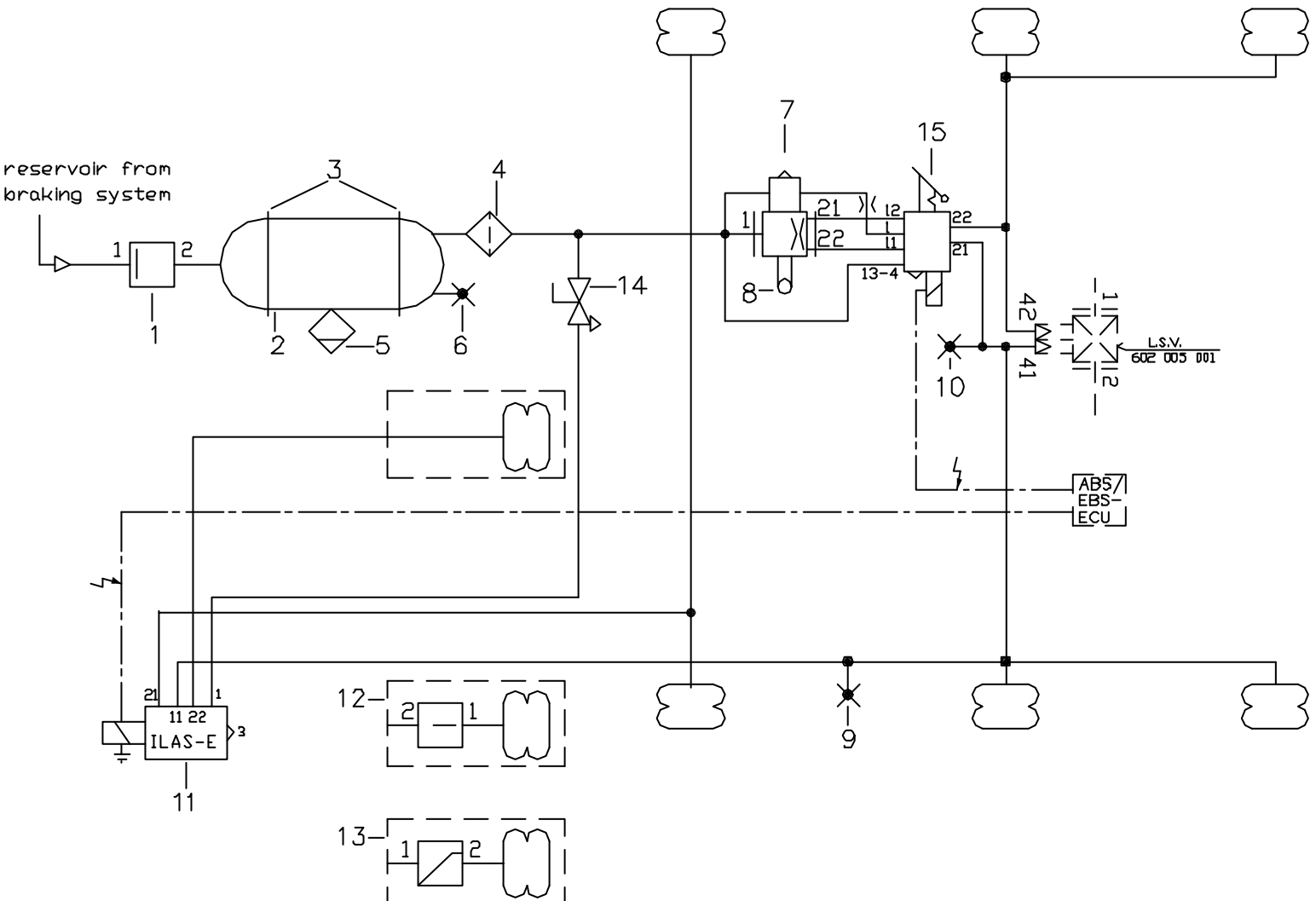
Created by C A D

air suspension system with one levelling valve
 for 3- axle air suspension unit with CDLAS,
 with ILAS - E (1. axle with axle lift)
 manufacturer :

380 101 951

page 1 of 1

symbols : DIN 74253



| | | |
|-----------------------------------|-------------------------------------|--------------------|
| HALDEX BRAKE PRODUCTS GmbH | air suspension system with 1 COLAS, | 380 101 951 |
| Client : | ILAS - E (1. axle with axle lift) | 11.08.2005 |
| Vehicle : | for 3- axle air suspension unit | Page 1 |

| Pos. | Qty. | Description | Part number |
|-------------|-------------|--|--------------------|
| 1 | 1 | PRESSURE PROTECTION VALVE w/o BACKFLOW (6,0 bar) | 314 012 004 |
| 2 | 1 | AIR RESERVOIR (EN) , V >= ... ltr. | 030 09 |
| 3 | 2 | MOUNTING BRACKET , D = ... mm | 030 09 |
| 4 | 1 | LINE FILTER | 310 005 011 |
| 5 | 1 | DRAIN VALVE , manual | 315 019 001 |
| 6 | 1 | TEST POINT (ISO 3583) , M 22*1.5 | 318 040 001 |
| 7 | 1 | LEVELLING VALVE | 612 032 ... |
| 8 | 1 | ACTUATING LEVER | 612 025 001 |
| 9 | 1 | TEST CONNECTION (ISO 3583) , M 12*1.5 | 318 036 001 |
| 10 | 1 | SIMULATOR POINT for pneum.controlled L.S.V. | 318 072 001 |
| 11 | 1 | ILAS - E *) 352 061 or | 352 062 ... |
| 12 | 1 | PRESSURE PROTECTION VALVE (e.g.-SAF) Option | 314 013 012 |
| 13 | 1 | PRESSURE LIMITING VALVE (e.g.BPW) Option | 357 012 031 |
| 14 | 1 | SHUT-OFF COCK (for service work) | 334 077 001 |
| 15 | 1 | COLAS (with soleonid) | 338 051 ... |

*) 352 062 ... with push in coupling (8*1) !