

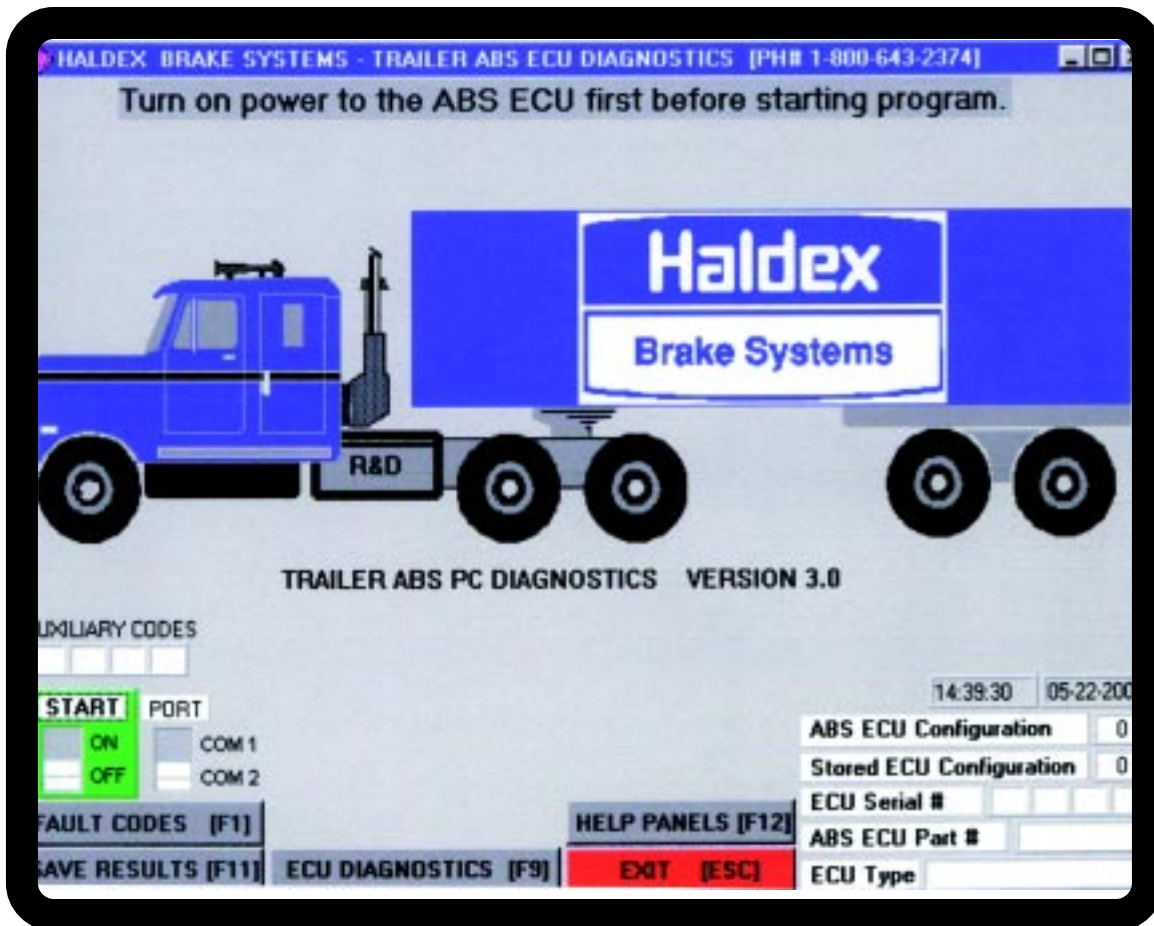
**Haldex**

L31140  
Rev. 7/00

# ABS DIAGNOSTICS

**Trailer PC Program**

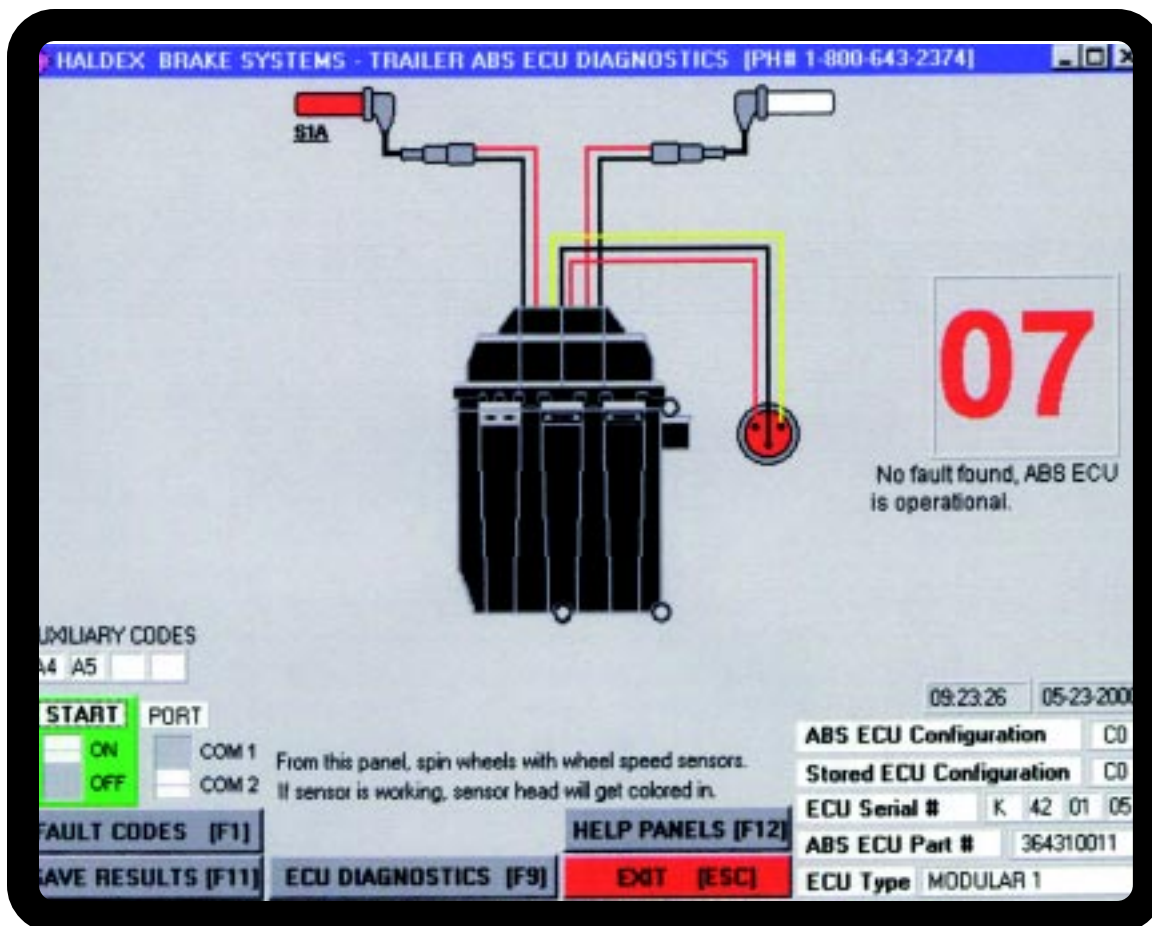
**\$3.00**



## START PANEL

Welcome to Haldex Brake Systems' PC Based ABS Diagnostic Program. From this Panel you can:

- ↻ Change the communications port you are using on the PC.
- ↻ Note Date and Time in your maintenance records.
- ↻ Start the program by:
  - selecting or clicking the "ON" Button, or
  - using the TAB Key to highlight and hit the ENTER Key.
- ↻ Save results of the ABS Electronic Control Unit (ECU) diagnostic test to the "C" drive on your PC's hard drive.



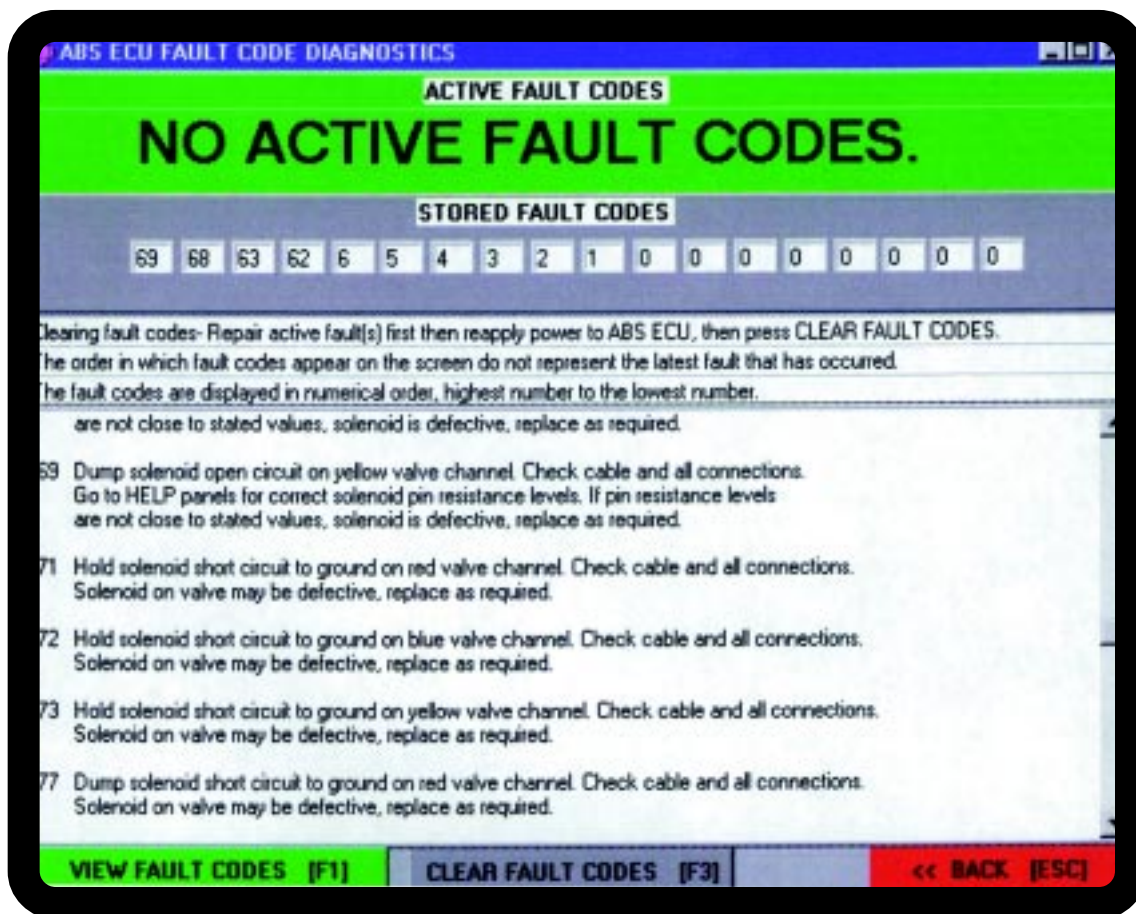
## MAIN AND SENSOR DIAGNOSTIC PANEL

This panel is activated by the "START" switch from the first screen. Advance to other panels by using the noted "F KEYS" or "ESC" to end program.

Your ABS system configuration will be displayed. The "07" diagnostic code means the system is normal and fully operational. If faults are detected, a different code will appear. Advance to Fault Code Panel by pressing "F1" to view.

With vehicle safely placed on jack stands, wheels can be spun to test sensors.

**Press HELP PANEL "F12" At Any Time For  
Detailed Instructions.**



## FAULT CODE PANEL (F1 From Main Panel)

Press "F1" to view active or stored fault codes displayed in the top screen bars. Use the scroll bar in the lower section to find the fault description and repair instructions. If any fault codes exist, make the correction(s) indicated, reapply power to the ECU, and clear the codes from the ECU's memory by pressing "F3."

If the problem continues, the fault code will not clear from memory and will continue to be displayed. Make further corrections or consult the Haldex Brake Systems Installation/Service Manual.

**Press BACK "ESC" when finished to go back to the Main Panel.**

EDIT FIELDS FOR SAVING TEST DATA TO A FILE

**USER NAME**  
STEVE MORRIS

**COMPANY NAME**  
HALDEX BRAKE SYSTEMS

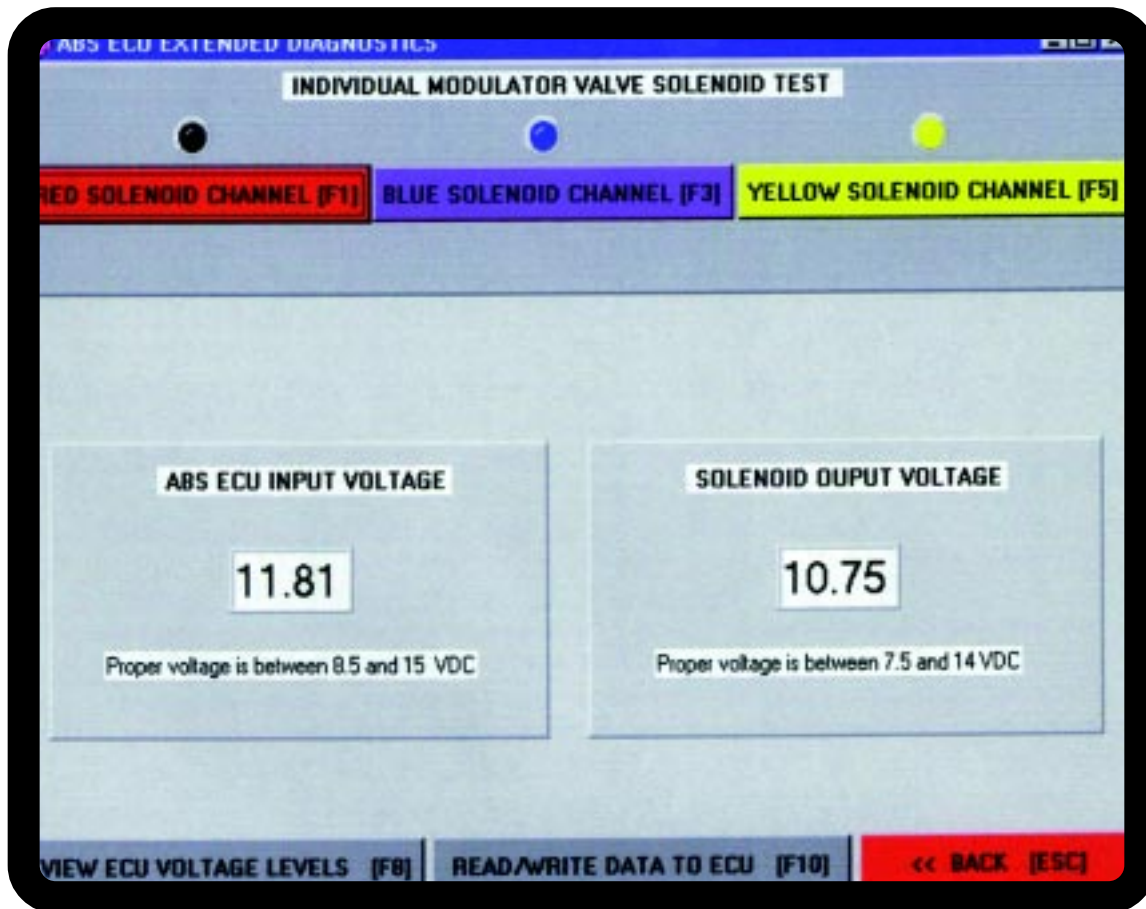
PRINT TEST RESULTS [F2]    SAVE TEST RESULTS [F5]    << BACK [ESC]

## SAVE RESULTS PANEL

Press "F2" for an immediate printout of test results. Dedicated printer must be connected to the printer port of the PC.

Press "F5" to save results of diagnostic test to a floppy disk or to the computer hard drive. Store test results for maintenance and tracking purposes.

**Press BACK "ESC" when finished to go back to the Main Panel.**



## ECU DIAGNOSTIC PANEL (F9 From The Main Panel)

This panel will allow you to perform valve solenoid operational testing by clicking on the appropriate bar at the top of the screen. When air pressure is available you will hear a brief valve exhaust, or clicking of the solenoid as the valve cycles. This indicates the solenoid on valve is operating properly.

System voltage can be viewed by pressing "F8." To ensure proper voltage is available, it is recommended that the test be performed on equipment set-up to operate. When performing this test on doubles or triples, all of the trailers should be coupled to a representative tractor for best results.

**Press "F10" To Advance To Read/Write Data Entry Panel  
And Follow Screen Instructions.**

**Press BACK "ESC" when finished to go back to the Main Panel.**

**READ AND WRITE DATA TO THE ABS ECU**

ECU DATA FIELDS

JULIAN BUILD DATE : 5 30

HALDEX CATALOG #: 20 11 93 BA

ABS ECU DATA FIELDS DISPLAY DATA THAT ARE PERMANENTLY STORED IN THE ABS ECU.

TYPE IN KEYBOARD CHARACTERS IN THE ECU EDIT FIELDS ONLY. THEN CLICK ON WRITE DATA TO ECU [F5].

COMPANY NAME : HBS

INSPECTION DATE : 05/00

VEHICLE VIN # : 83746578439345WX

EDIT FIELDS

ECU DATA FIELDS

H B S

0 5 / 0 0

ECU DATA FIELDS

8 3 7 4 6 5 7 8 4 3 9 3 4 5 W X

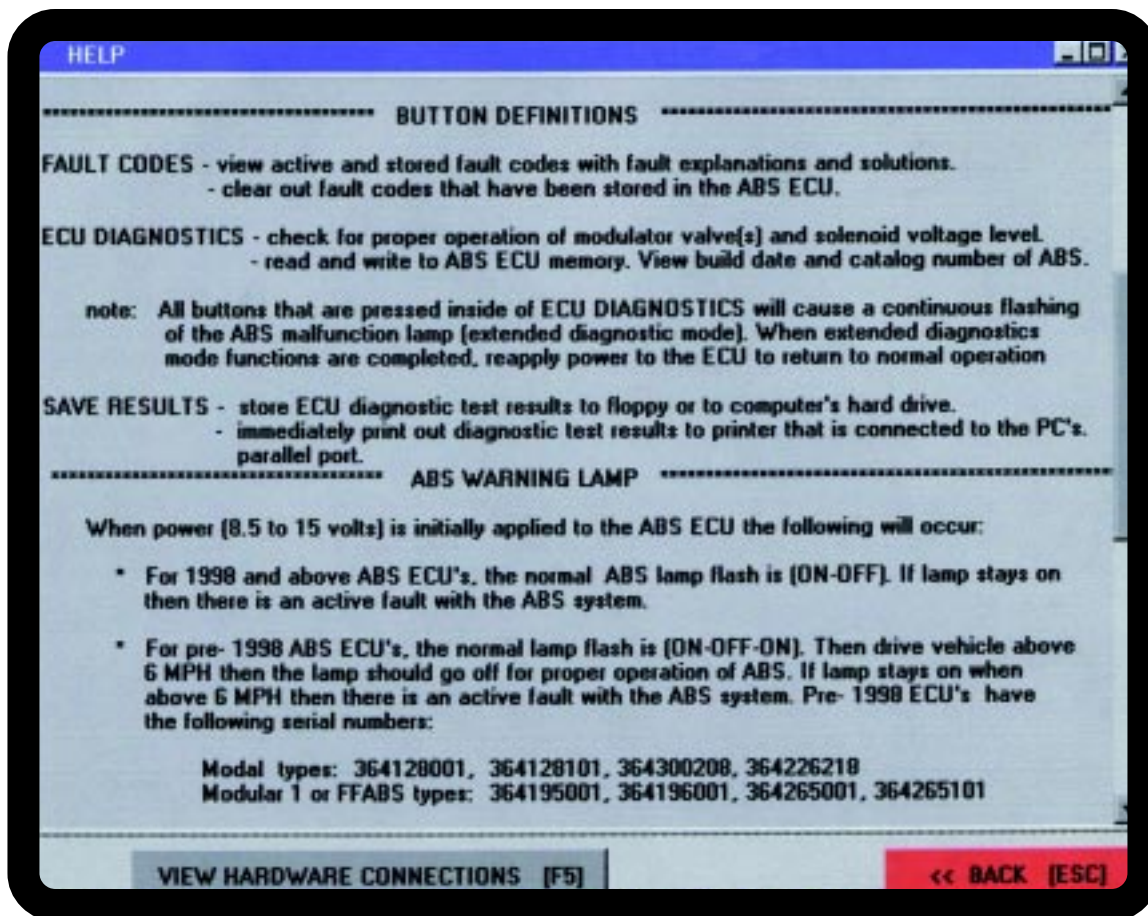
VIEW DATA STORED IN ECU [F1] WRITE DATA TO ECU [F5] << BACK [ESC]

## READ/WRITE DATA ENTRY PANEL

Follow screen instructions to add your information into the three EDIT FIELDS. Conveniently labeled, the fields will accept all alpha-numeric characters. Entries are displayed in ECU Data Fields.

**Press BACK "ESC" to go back to the ECU Diagnostic Panel.**

**Press BACK "ESC" [again] when finished to go back to the Main Panel.**



## ON-SCREEN HELP INFORMATION PANEL (F12 From Main Panel)

This panel provides helpful information about the Haldex Brake Systems Trailer ABS PC Diagnostic Program. If the information you need does not appear on the screen, or is not available in the Haldex Brake Systems ABS Installation/Service Manual, contact the Technical Services Department during normal business hours for assistance:

## TECHNICAL SERVICES DEPARTMENT (800) 643-2374 - (Prompt #2)

Press BACK "ESC" when finished to go back to the Main Panel.