

Installation Guide

L31236

7/07



AQ15458
ABS Bolt-On
Sensor Bracket
Hardware Kit

Installation Instructions
Bolt-On Sensor Bracket
Used with AQ960514 or AQ960515 - Hallex Trailer ABS 2S/1M
(When replacing MBS2 In-Axle Speed Sensor)



This kit includes all components required to replace the WNC MBS2 (In-Axle Speed Sensor).

SAFETY FIRST!

Please follow your company's safety procedure when you install this equipment. Be sure that you understand all instructions before you begin.

Prepare the vehicle as with any part replacement procedure by releasing all air pressure including air tanks, chocking the wheels, and ensuring adequate vehicle support.

IMPORTANT NOTICE

*The data listed herein is correct to the best of Haldex's knowledge and belief, having been compiled from reliable and official sources of information. However, **HALDEX CAN NOT ASSUME ANY RESPONSIBILITY** for possible error or misapplication of the product. Final determination of the suitability of the products for the use contemplated by the Buyer is the sole responsibility of the Buyer. Haldex shall have no responsibility in connection with this suitability.*

IMPORTANT NOTICE

The description and specifications contained in this Installation Manual are current at the time of printing. Haldex Brake Products Corp. reserves the right to discontinue or modify its models and/or procedure and to change specifications at any time without notice.

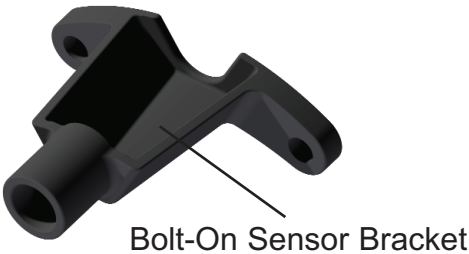
Removing old In-Axle Speed Sensors

1. Unplug the sensor wires going into the axle housing so the ECM can be removed.
2. Install 1/2" NPT pipe plugs into the axle housing.
3. Remove existing hub caps and In-Axle Speed Sensors.
4. Use a slide hammer to remove the existing axle spindle plugs. Install the new axle spindle plugs from the kit to prevent contamination.
5. Re-install hub caps.



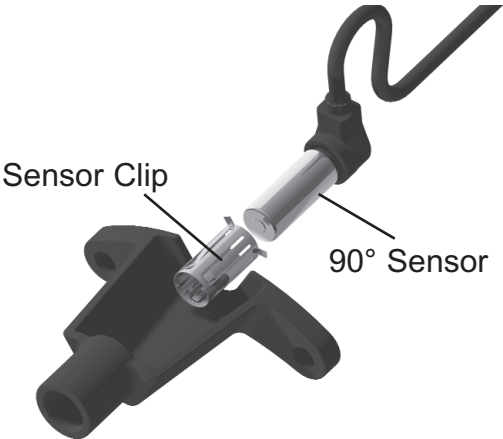
Installing Haldex ABS Bolt-On Sensor Bracket

Step 1. Remove the ABS Bolt-On Sensor Bracket for the kit.

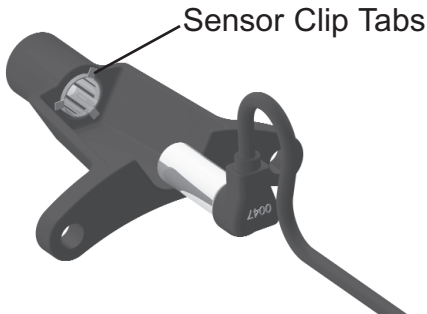


Step 2. Insert sensor clip into bracket bore.

Note: Lightly grease the 90° Sensor barrel with a Lithium based grease. Use Dow Corning Molycoat CU7439 or equivalent.



Step 3. Ensure that the Sensor Clip Tabs bottom out.



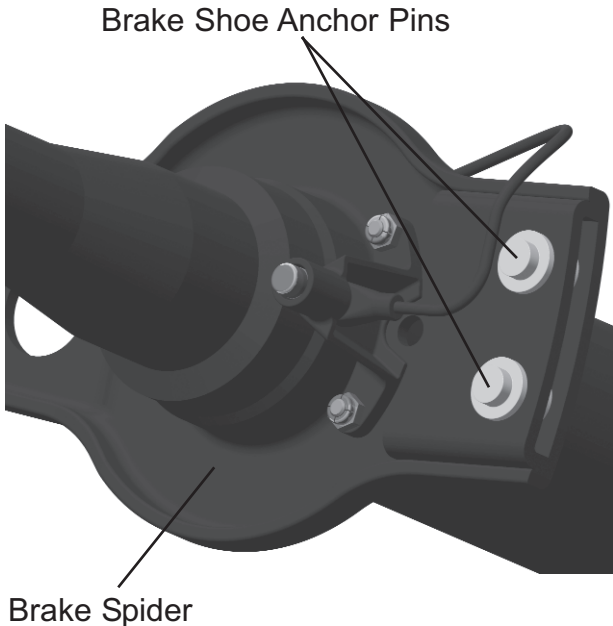
Step 4. Insert 90° Sensor into Sensor Clip.



Step 5. Locate and mount the Haldex ABS Bolt-On Sensor Bracket to existing brake spider holes. Using (2) 5/16-18 x 1-1/4 long bolts, 5/16" flat washers, and lock nuts.

Note:

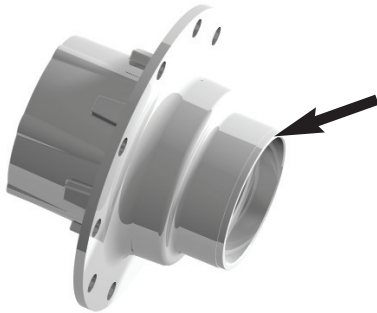
- Insert 5/16-18 bolts from backside of brake spider.
- Maximum fastener torque (20 ft lbs)



Mounting Exciter Ring on Hub



Step 6. Use a wire brush to clean area on the hub before mounting the exciter ring.



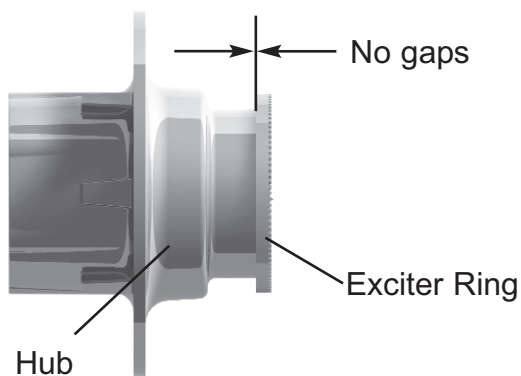
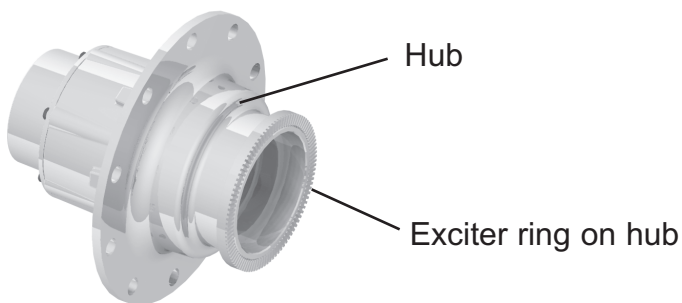
Step 7.

Heat the exciter ring uniformly to approximately 350° F.

Slip the exciter ring onto the machined surface

Ensure the Exciter Ring fits squarely on the machined surface.

When the Exciter Ring cools, it will shrink fit onto the hub. Ensure that the Exciter Ring is secure and does not slip on the hub.

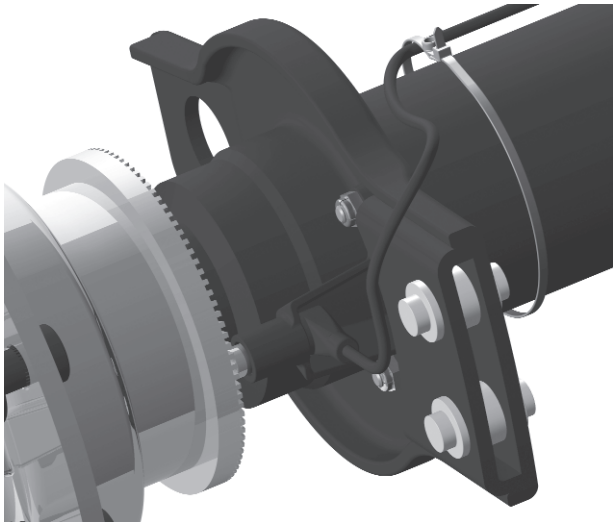


100 Tooth Exciter Ring

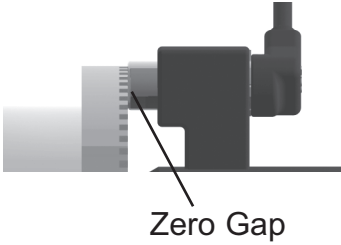
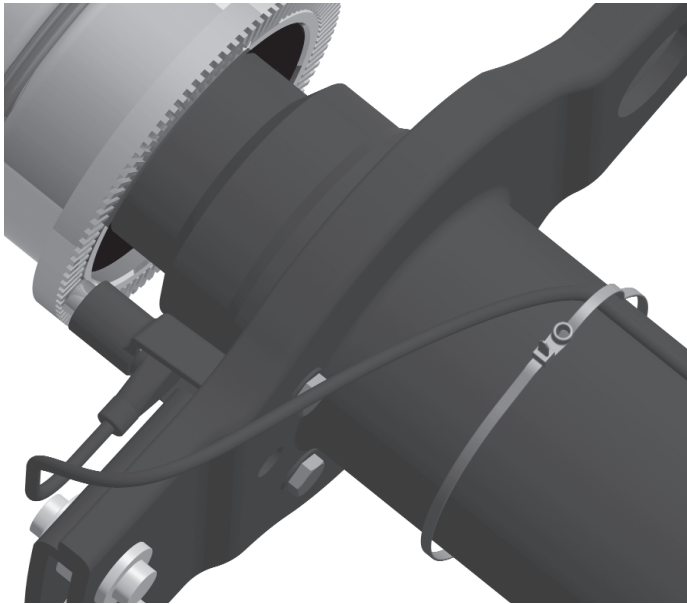


Hub and ABS Sensor Placement

Step 8. Install hub assembly.



Step 9. Ensure that the sensor is pushed **firmly** against the Exciter Ring. There should be zero gap between the sensor and the Exciter Ring.



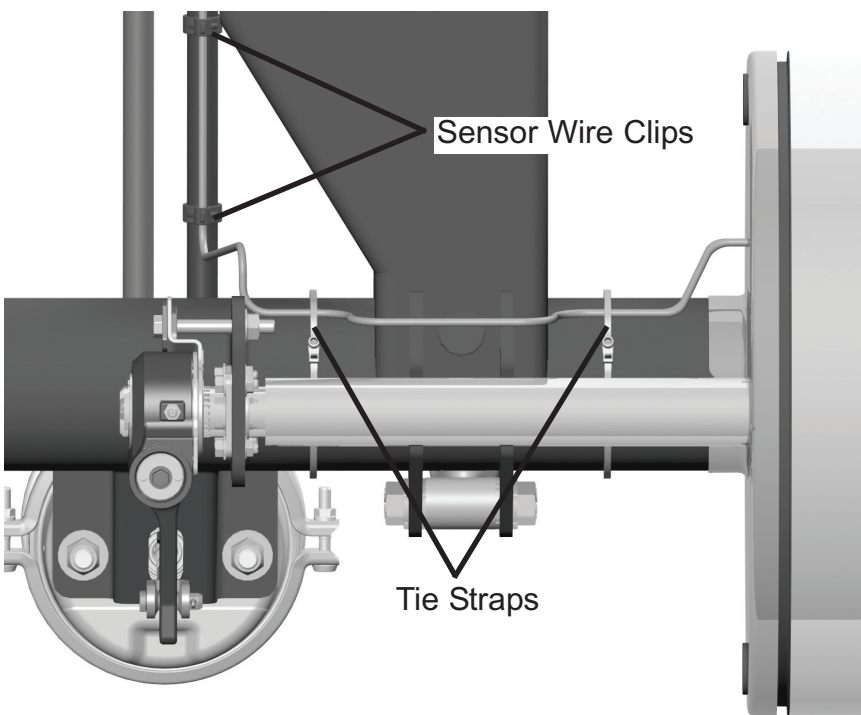
Speed Sensor Cable Routing



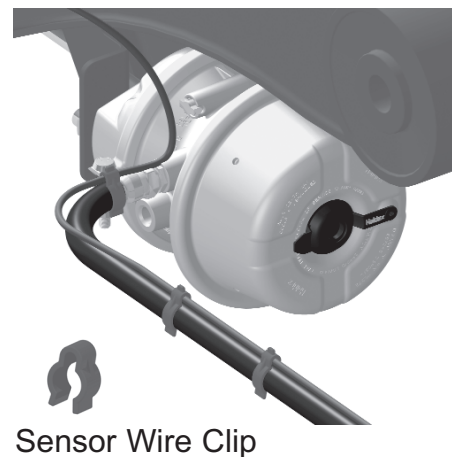
The preferred routing cable procedure is to route the speed **sensor cables on the back side of the axle housing** along the air hoses between the 4 Port ABS valve and the brake actuators.

Tie straps may be used to secure sensor cable to the axle housing. Sensor clips are used to secure speed sensor cables to air hoses.

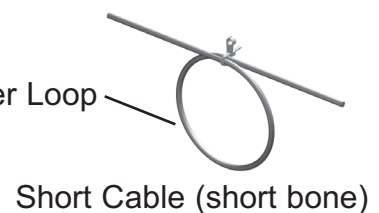
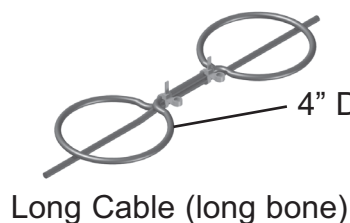
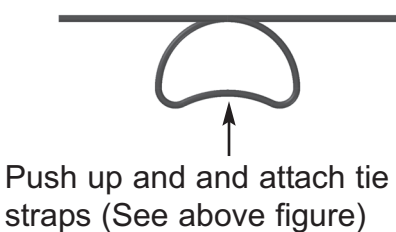
Leave some slack in cable to accommodate movement between chassis components. Excess cable length must not be allowed to hang free. Excess cable must be bundled and attached to the chassis or air lines to prevent damage due to vibration and abrasion. See method below for securing extra cable length.



Sensor wire clips are used to secure sensor cable to brake hoses



Excess cable length may be taken up in either a "Short Bone" or a "Long Bone" method and secured with tie straps. **DO NOT** coil the cable into a loop smaller than 4" in diameter. Do not over tighten the tie straps when the cable is coiled, as this could cause a cable failure.



The Haldex logo consists of the word "Haldex" in a white, bold, sans-serif font, centered within a black rounded rectangular background.

**Technical Service
&
Engineering Support**

**In the U.S. please call:
1-800-643-2374 (#2)**

**In Canada, please call:
1-800-267-9247**

Haldex offers proprietary vehicle technology solutions to the global vehicle industry within specific niches. We focus on products to improve safety, the environment and vehicle dynamics.

We are enhancing our competitive capabilities and building long-term customer relationships through high performance, low total costs to the customer through the product's service life, ethical business practices and commitment to long-term partnerships. Haldex operations are divided into four business areas: Commercial Vehicle Systems, Hydraulic Systems, Garphyttan Wire and Traction Systems.

Austria

Haldex Wien Ges.m.b.H.
Vienna
Tel.: +43 1 8 65 16 40
Fax: +43 1 8 65 16 40 27
E-Mail: info.AT@Haldex.com

Belgium

Haldex N.V./S.A.
Balegem (Ghent)
Tel.: +32 9 363 90 00
Fax: +32 9 363 90 09
E-Mail: info.BE@Haldex.com

Brazil

Haldex do Brasil Ind. e Com, Ltda.
São Paulo
Tel.: +55 11 213 55 000
Fax: +55 11 503 49 515
E-Mail: info.BR@Haldex.com

Canada

Haldex Ltd
Guelph, Ontario
Tel.: +1 519 826 7723
Fax: +1 519 826 9497
E-Mail: info.CA@Haldex.com

China

Haldex International Trading Co. Ltd.
Shanghai
Tel.: +86 21 5240 0338
Fax: +86 21 5240 0177
E-Mail: info.CN@Haldex.com

France

Haldex Europe SAS
Weyersheim (Strasbourg)
Tel.: +33 3 88 68 22 00
Fax: +33 3 88 68 22 09
E-Mail: info.EUR@Haldex.com

Germany

Haldex Brake Products GmbH
Heidelberg
Tel.: +49 6221 7030
Fax: +49 6221 703400
E-Mail: info.DE@Haldex.com

Hungary

Haldex Hungary Kft.
Szentlőrincváta
Tel.: +36 29 631 300
Fax: +36 29 631 301
E-Mail: info.HU@Haldex.com

India

Haldex India Limited
Nasik
Tel.: +91 253 2380094
Fax: +91 253 2380729
E-Mail: info.IN@Haldex.com

Italy

Haldex Italia Srl.
Muggio (Milano)
Tel.: +39 039 278 23 50
Fax: +39 039 796 525
E-Mail: info.IT@Haldex.com

Poland

Haldex Sp. z.o.o.
Praszka
Tel.: +48 34 350 11 00
Fax: +48 34 350 11 11
E-Mail: info.PL@Haldex.com

Russia

OOO Haldex RUS
Moscow
Tel.: +7 495 747 59 56
Fax: +7 495 786 39 70
E-Mail: info.RU@Haldex.com

South Korea

Haldex Korea Ltd.
Seoul
Tel.: +82 2 2636 7545
Fax: +82 2 2636 7548
E-Mail: info.KR@Haldex.com

Spain

Haldex España S.A.
Parets del Valles (Barcelona)
Tel.: +34 93 573 10 30
Fax: +34 93 573 07 28
E-Mail: info.ES@Haldex.com

Sweden

Haldex Brake Products AB
Landskrona
Tel.: +46 418 47 60 00
Fax: +46 418 47 60 01
E-Mail: info.SE@Haldex.com

United Kingdom

Haldex Ltd.
Newton Aycliffe
Tel.: +44 1325 310 110
Fax: +44 1325 311 834
E-Mail: info.GBAy@Haldex.com

Haldex Brake Products Ltd.
Redditch

Tel.: +44 1527 499 499
Fax: +44 1527 499 500
E-Mail: info.GBRe@Haldex.com

USA

Haldex Brake Products Corp.
Kansas City, MO
Tel.: +1 816 891 2470
Fax: +1 816 891 9447
E-Mail: info.US@Haldex.com

©2007, This material may contain Haldex trademarks and third party trademarks, trade names, corporate logos, graphics and emblems which are the property of their respective companies. The contents of this document may not be copied, distributed, adapted or displayed for commercial purposes or otherwise without prior written consent from Haldex.

