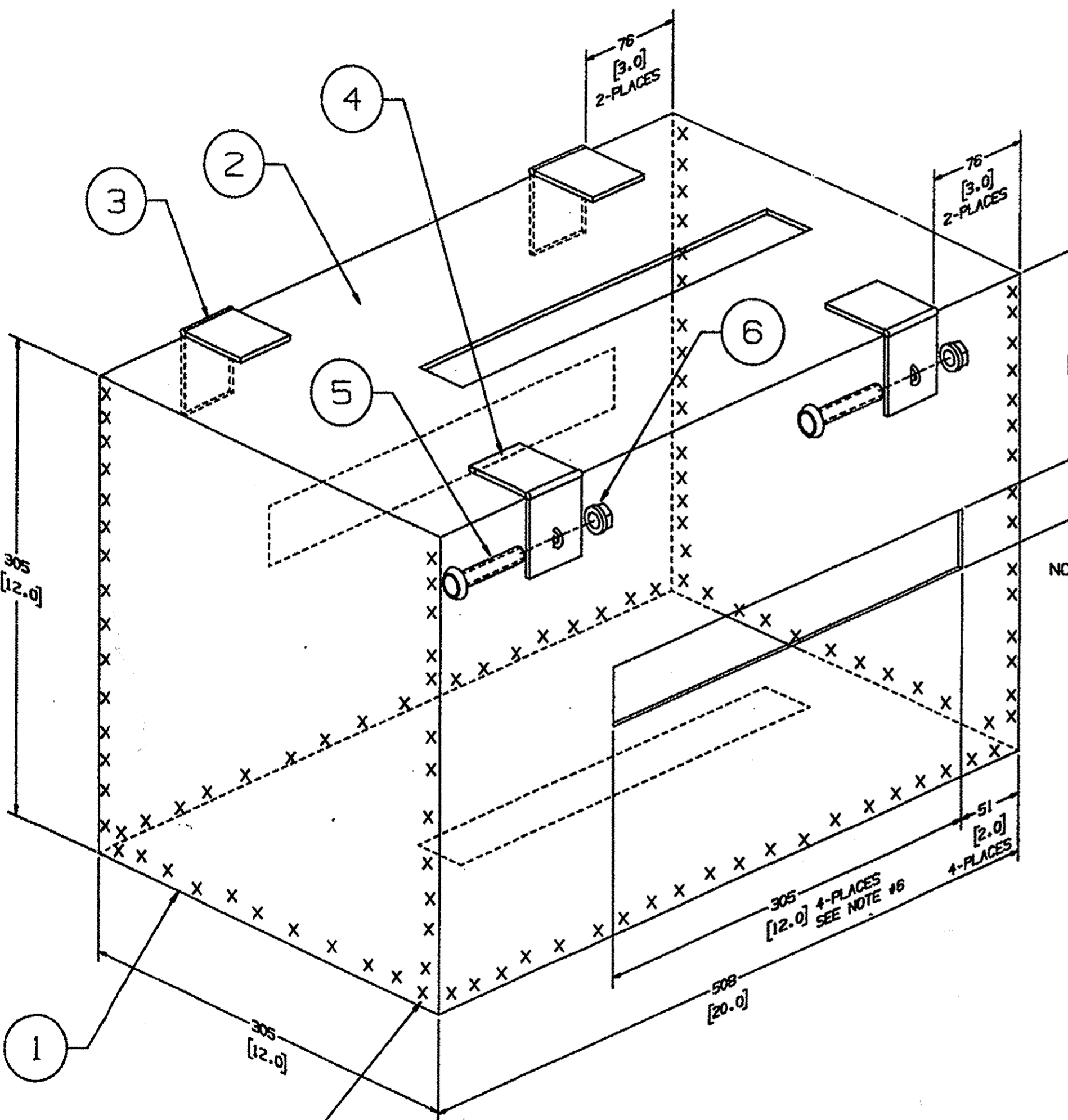


Let.	Revision	Date	Dr.	CK.	App.
C	REDRAWN & REVISED (04-149)	12-Mar-04	KMB	DCR	BF



- NOTES:
1. DRILL HOLES AND USE MANUFACTURER'S SUGGESTED FASTENERS TO MOUNT HINGES AND HASPS OR WELD IN PLACES
 2. WELD WHERE INDICATED BY XXXXXX
 3. DO NOT WELD LID TO BODY.
 4. PAINT TO SUIT.
 5. MATERIAL: 2 PCS 12" X 12" X 1/4" THICK
4 PCS 12" X 20" X 1/8" THICK
HR OR CF STEEL
 6. CUT 305 [12.0] X 38 [1.5] SLOTS
IN MATERIAL AS SHOWN 4-PLACES.

ITEM	QTY	DESCRIPTION
1	1	BODY
2	1	LID
3	2	6" HEAVY DUTY WROUGHT STEEL HINGE
4	2	1 3/4" WIDE HEAVY DUTY WROUGHT STEEL HINGED HASP
5	2	3/8" CARRIAGE BOLT (11M052)
6	2	3/8" CARRIAGE NUT (11M051)

NOTE:
ALL WELDING PER HALDEX ENGINEERING STANDARD NS-65-07 UNLESS OTHERWISE SPECIFIED.
ALL WELDS TO BE ±.08 UNLESS OTHERWISE SPECIFIED.

SEE NOTE #2
SEE NOTE #3

DRAFT NUMBER
110372

DIMENSIONS UNLESS OTHERWISE SPECIFIED CONFORM WITH ASME Y14.5M

THIS DRAWING CONTAINS CONFIDENTIAL PROPRIETARY INFORMATION OF HALDEX BRAKE PRODUCTS CORPORATION AND IS SUBJECT TO RETURN UPON REQUEST. THE FURNISHING OF THIS DRAWING IS NOT TO BE CONSTRUED AS THE GRANT OF ANY LICENSE, EITHER EXPRESS OR IMPLIED, TO MANUFACTURE, HAVE MANUFACTURED, USE OR SELL THE STRUCTURES SHOWN HEREON.

LR	DR
CR	AR
ER	PR

SUPERSEDES: _____ SUPERSEDED BY: _____

Third Angle Projection:

TOLERANCES
Unless Otherwise Specified
125/Finish per ANSI B46.1

1 Place ± 0.1	<input checked="" type="checkbox"/> Dimensions in Inches <input type="checkbox"/> Dimensions in mm DO NOT SCALE DRAWING
2 Place ± 0.02	
3 Place ± 0.005	
Angular ± 0.5	

MATERIAL: SEE NOTES

Material Approved: _____ Weight: _____ lb _____ kg

Drawn: BOCKEKM 04-149 12-Mar-04
Checked: DC RHOAD 23 MAR 04
Approved: BF 23 MAR 04
Originally for: _____
Scale: NONE

DRAFT NAME: BOX ASSY, DISARMING CHAMBER
DRAFT NUMBER: 110372
HALDEX HALDEX BRAKE PRODUCTS CORPORATION Kansas City, Missouri
DRAFT NAME: BOX ASSY
DRAFT NUMBER: 110372
GENERIC MODEL NO. 110372