

TECHNICAL INFORMATION



DRYest Air Dryer provides clean brake system air with the lowest initial system and lifetime costs.

The Haldex DRYest provides more integrated features than any other air dryer on the market. DRYest is available with integrated: turbo protection valve, governor, regeneration valve, muffler and heater. DRYest adapts to fit *YOUR* application.

Typically this air dryer is used in a system where the secondary tank works in conjunction with the regeneration valve to purge the dryer. However, DRYest can be used with auxiliary purge tanks or can even be used with European unloader systems where the compressor unloads through the dryer.

Haldex DRYest Air Dryer

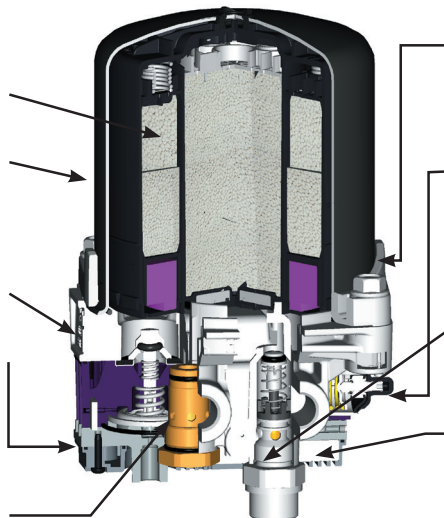
Multi-treatment cartridge employs five stage cleaning to ensure dry system air.

Extra compact size of less than 11" tall (even with integrated muffler) allows for easy installation anywhere.

Integrated heater prevents moisture from freezing and damaging the dryer.

Metri-pack heater connection allows for easy installation.

Integrated turbo protection valve reduces engine horsepower loss and improves fuel efficiency.



Integrated 3-bolt SAE mounting bracket allows for easy installation in OEM and existing applications.

Integrated governor improves air dryer's performance and reduces application costs by eliminating existing governor and related piping.

Integrated regeneration valve for system air desiccant regeneration ensures that sufficient system air is available.

Integrated muffler allows for superior quiet operation.



Innovative Vehicle Solutions

Design and Function



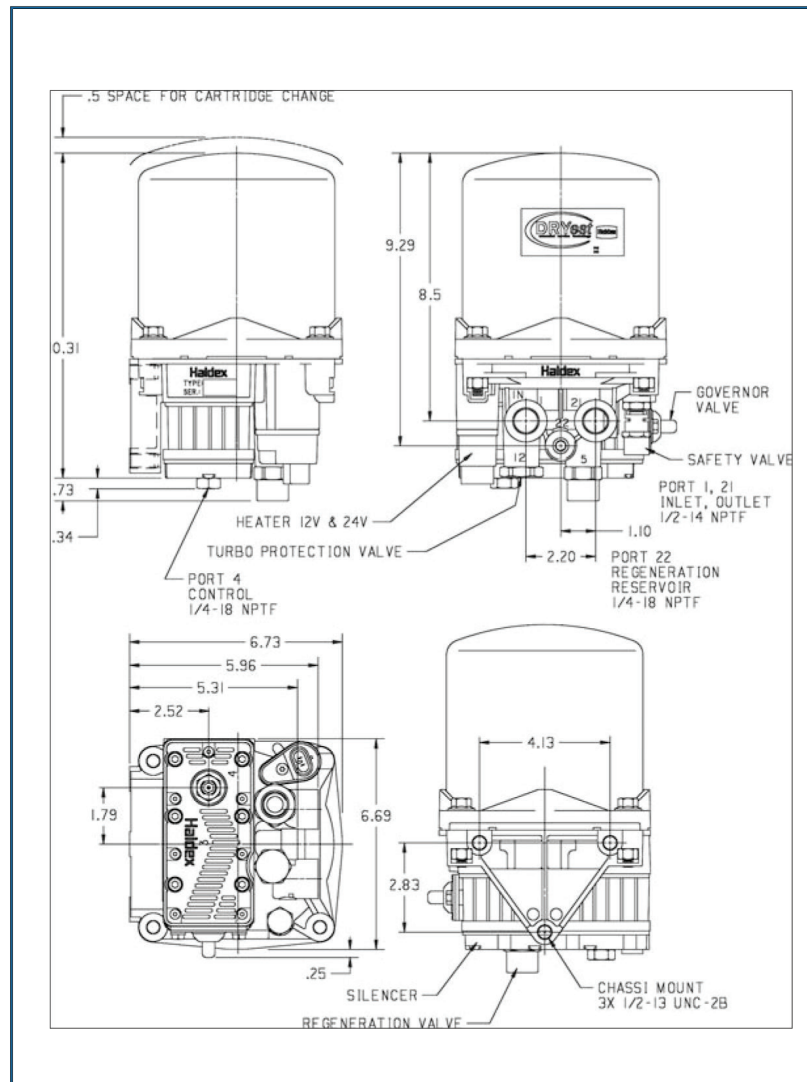
Haldex DRYest Air Dryer

Product Specifications

- › Stages of drying: five
- › Inlet air temperature: -40°F to 170°F
- › Maximum working pressure: 150 psi
- › Safety relief pressure: 160 psi
- › Heater: 12V/90W or 24V/140W
- › Drying capacity: 5.8 SCF
- › Desiccant cartridge weight: 3.5 lbs.
- › Assembly weight: 13.5 lbs.
- › Governor cut-out: 125 + 5 psi
- › Maximum inlet airflow: 35 SCFM
- › Pressure drop: 2.5 psi @ 15 SCFM/120 psi
- › Regeneration valve system purge drain: Silencer
- › Turbo protection: 35 psi inlet required

Available Options

- › Heater - 12V or 24V
- › M24x1, 4mm pin, Deutsch, Packard electrical connection
- › 20mm hose fitting drain
- › SAE or metric port threads
- › External pressure control check valve
- › Purge tank for regeneration



Installation Guidelines (SAE J2383)

Locate with sufficient space to facilitate service and visual access.

Mount away from direct tire splash.

Mount brackets, fitting and line in a protected area.

Mount with exhaust port downward.

Mount in area to avoid excessive heat.

Rigid mount to avoid excess vibration.

Line from compressor to DRYest should have continuous downward slope and no dips.

Inlet hose should be a minimum 12' to maintain proper inlet temperature.

Avoid 90° fittings.

Do not exceed 15° inclination.



United States 816-891-2470
Canada 519-621-6722
Mexico 52-81-81569500

For additional contact information or to learn more about Haldex, please visit Haldex.com