

# TECHNICAL INFORMATION

## Consep™



### Consep™ Condenser/Separator for more effective air cleaning.

The Haldex Consep, a low maintenance air pre-treatment condenser/separator, is your first and last line of defense against moisture and contaminants that can affect the performance and life of your air brake system in severe duty cycle applications, such as the heavy loads and frequent stops of city traffic operation. That's why it is important to team up your Haldex DRYest® and PURest® Air Dryers with the Haldex Consep. The Consep condenses, separates and removes 90% of the oils, liquids and other contaminants, while treating up to 30 SCFM.

When teamed up with the DRYest or PURest, the Consep reduces corrosion and possible failure of air brake system components caused by contamination, while significantly increasing the air dryer desiccant life.

Whether added as an aftermarket retrofit, or factory installed, the easy installation and reliable operation of the Consep make it ideal for applications requiring frequent stopping. The Consep can also be used as a standalone air cleaner for less demanding systems, such as those found on trailers.

## Haldex Consep

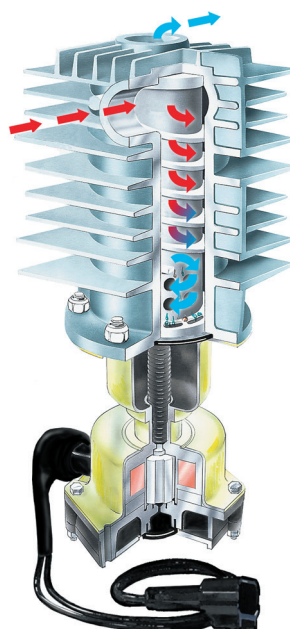
**Air enters the circular air path** of the Consep through the side inlet port.

**Large external cooling fins** cause oil, water and contaminants to condense and separate from the air.

**Centrifugal effect forces the oil, water and contaminants to the housing wall** where they run to the bottom of the system.

**Clean air exits the outlet port on top** of the housing to continue on to the remaining components of the air system.

**Oil, water and contaminants** are held in the bottom, while clean air exits the Consep., then they are expelled from the system through the electronically controlled automatic drain valve.



Mounted between the air compressor and the air dryer, the compact Consep requires little maintenance during its long service life.

An automatic drain valve installed on the Consep saves time while ensuring that liquids are removed regularly for optimum performance. The drain valve's integrated filter prevents damage from large debris, while a built-in heater prevents freeze up.



Innovative Vehicle Solutions



## Haldex Consep Condenser/Separator

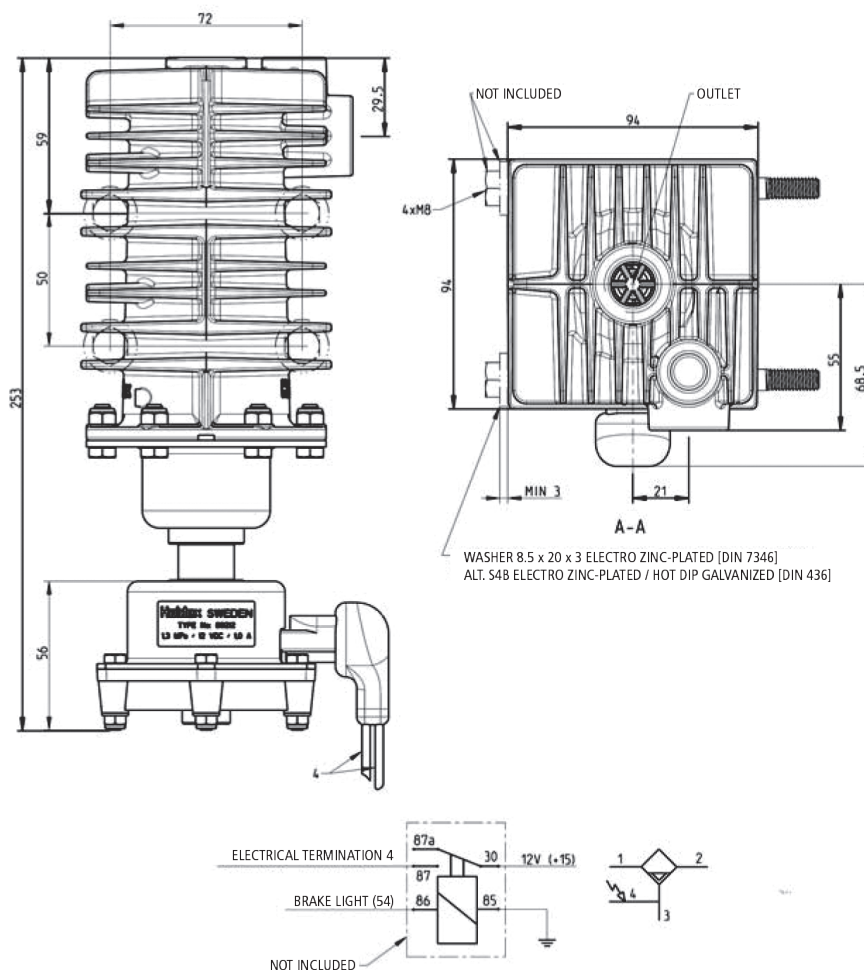
### Product Specifications

- › **Approximate weight:**  
4.25 lbs.
- › **Height:**  
10"
- › **Width:**  
4.4"
- › **Drain capacity:**  
1.3cc/purge @ 116 psi
- › **Mounting position:**  
Vertical
- › **Maximum operating pressure:**  
290 PSI
- › **Inlet temperature:**  
-40°F - 175°F
- › **Port sizes:**  
1/2" - 14 NPTF
- › **Rated voltage and power consumption:**  
12 Volt/1 AMP

### Available Options

- › **Drain Valve - 12V or 24V**
- › **Electrical Connection - M24x1, 4mm pin, Deutsch, Packard, Pigtail Wires**
- › **Metric Pipe Connection - M22x1.5**
- › **Drain Tube Kit**

## Design and Function



### Installation Guidelines (SAE J2383)

Locate with sufficient space to facilitate service and visual access.

Mount away from direct tire splash.

Mount brackets, fitting and line in a protected area.

Mount with exhaust port downward.

Mount in area to avoid excessive heat.

Rigid mount to avoid excess vibration.

Line from compressor to Consep should have continuous downward slope and no dips.

Inlet hose should be a minimum 12' to maintain proper inlet temperature.

Avoid 90° fittings.

Do not exceed 15° inclination.



United States 816-891-2470  
Canada 519-621-6722  
Mexico 52-81-81569500

For additional contact information  
or to learn more about Haldex,  
please visit **Haldex.com**