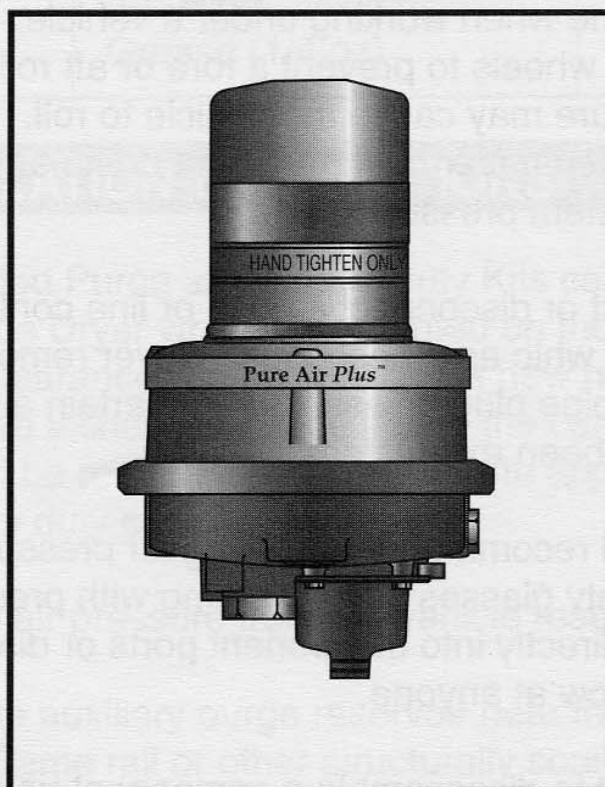


L31125

4/96

Haldex



INSTALLATION INSTRUCTIONS
HALDEX PURE AIR PLUS
EXTENDED PURGE KIT (DQ6027)
HEAVY DUTY CANISTER KIT (DQ6028)

EXTENDED PURGE/HEAVY DUTY CANISTER KIT INSTALLATION INSTRUCTIONS

WARNING

When working on air system components the following precautions should be observed.

1. Stop the engine when working under a vehicle. Always block the vehicle wheels to prevent a fore or aft roll. Bleeding off system pressure may cause the vehicle to roll. Keep hands away from brake chamber push rods and brake adjusters; they may apply as system pressure drops.
2. Never connect or disconnect a hose or line containing air pressure. It may whip as air escapes. Never remove a component or a pipe plug unless you are certain all system air pressure has been exhausted.
3. Never exceed recommended working air pressure and always wear safety glasses when working with pressurized air. Never look directly into component ports or direct a pressurized air flow at anyone.
4. Never attempt to disassemble a component until you have read and understood all recommended procedures. Some components contain powerful springs and injury can result if not properly disassembled. Use only proper tools and observe all precautions pertaining to the use of those tools.

EXTENDED PURGE KIT (DQ6027) CONTENTS

QTY.	DESCRIPTION	PART NUMBER
2	Tube & Fitting Assembly	5300706
1	Drain Valve (1/4")	10713
1	Pipe Plug (3/8")	7-X-1002
1	Air Reservoir (150in ³)	N-3625-G

HEAVY DUTY CANISTER KIT (DQ6028) CONTENTS

QTY.	DESCRIPTION	PART NUMBER
2	Tube & Fitting Assembly	5300706
1	Drain Valve (1/4")	10713
1	Pipe Plug (3/8")	7-X-1002
1	Air Reservoir (150in ³)	N-3625-G
1	Desiccant Canister	201160-B
1	"O"-Ring	N-11728-AJ
1	Grease (1/4 oz)	102532-B

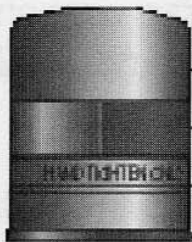
INSTALLATION INSTRUCTIONS

The Extended Purge and Heavy Duty Kits can be installed on the Pure Air Plus Dryer while it is mounted on the vehicle, if there is adequate clearance. When installing a new heavy duty canister, at least three inches clearance above the current standard duty canister will be required to accommodate application and servicing of the heavy duty canister.

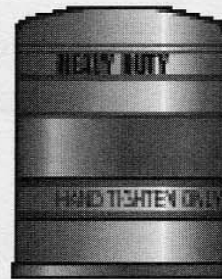
1. Drain all air pressure from the vehicle reservoirs.
2. Install the auxiliary purge reservoir near the air dryer on the vehicle frame rail or other structurally sound member with the 3/8" and 1/4" air ports pointing down, and the bottom of the reservoir higher than the access port of the air dryer purgel volume.
3. Attach the reservoir to the bracket or frame with two 1/2" Grade 5 bolts and prevailing torque lock nuts. The bolts are to be applied in diagonally opposite holes on the reservoir bracket and torqued to 50 ft lbs.
4. Remove one of the 3/8" pipe plugs from the bottom of the air dryer.
5. Apply thread sealant to the pipe threads of all fittings.

INSTALLATION INSTRUCTIONS (CONT'D)

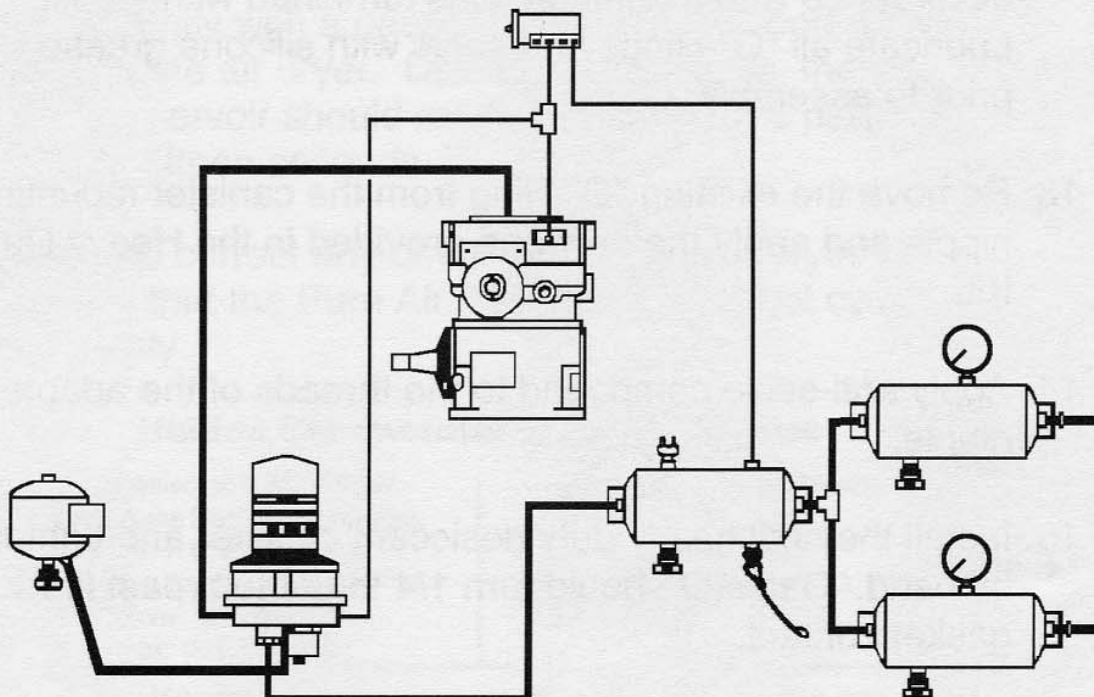
6. Install the 3/8" pipe plug in the top port of the auxiliary reservoir.
7. Install one of the 3/8" tube and fitting assemblies in the bottom port of the auxiliary reservoir and the other in the bottom access port of the air dryer purge volume.
8. Install the 1/4" drain valve in the 1/4" bottom port of the reservoir. (Installation Instructions Continued on Back)



**201160
Standard Canister
2.1 lbs.**



**201160-B
Heavy Duty Canister
3.0 lbs.**



INSTALLATION INSTRUCTIONS (CONT'D)

9. Install a 3/8" plastic tube between the bottom port of the reservoir and the bottom port of the air dryer. The tube should be just long enough to make the connection (there should be no undue stress or kinks).

If a new heavy duty canister is being installed, continue with installation instructions. If not, stop here and go to the operational checks. Inspection of the existing canister and coalescing filter is recommended if they are to remain installed.

10. Loosen desiccant canister with a strap wrench at the base of the canister and spin off by hand. (OTC #7206 Snap-On #A91C or equivalent.)
11. Remove the coalescing filter and inspect for damage, deterioration and/or excessive contamination. Replace filter if necessary. (Use Coalescing Filter Kit DQ6021.)
12. If the coalescing filter is replaced, install the new filter in accordance with the instructions furnished with the kit. Lubricate all "O"-Rings and seals with silicone grease prior to assembly.
13. Remove the existing "O"-Ring from the canister mounting nipple and apply the new one provided in the Heavy Duty Kit.
14. Apply anti-seize compound to the threads of the adapter nipple.
15. Install the new heavy duty desiccant canister and tighten by hand. Canister should turn 1/4 to 3/4 turn past first gasket contact.

Proceed to Operational Checks.

OPERATIONAL CHECKS

- A. Upon completion of the heavy duty and/or added purge application, start the engine and allow service reservoir pressure to increase to 100 psig. Shut off the engine.
- B. Check for air leaks at the newly installed devices and fittings. Correct any leakage problems.
- C. Restart the engine and allow the air pressure to increase until compressor unload occurs.
- D. When compressor unload occurs, the dryer purge valve will open and immediately expel a large volume of air, followed by a slow flow of air lasting approximately thirty to forty seconds.

If the purge time appears to be less than thirty seconds, a gauge should be installed in the 3/8" NPT port on the top of the auxiliary reservoir so the purge time can be more accurately measured. Time pressure delay between 120 and 5 psig.

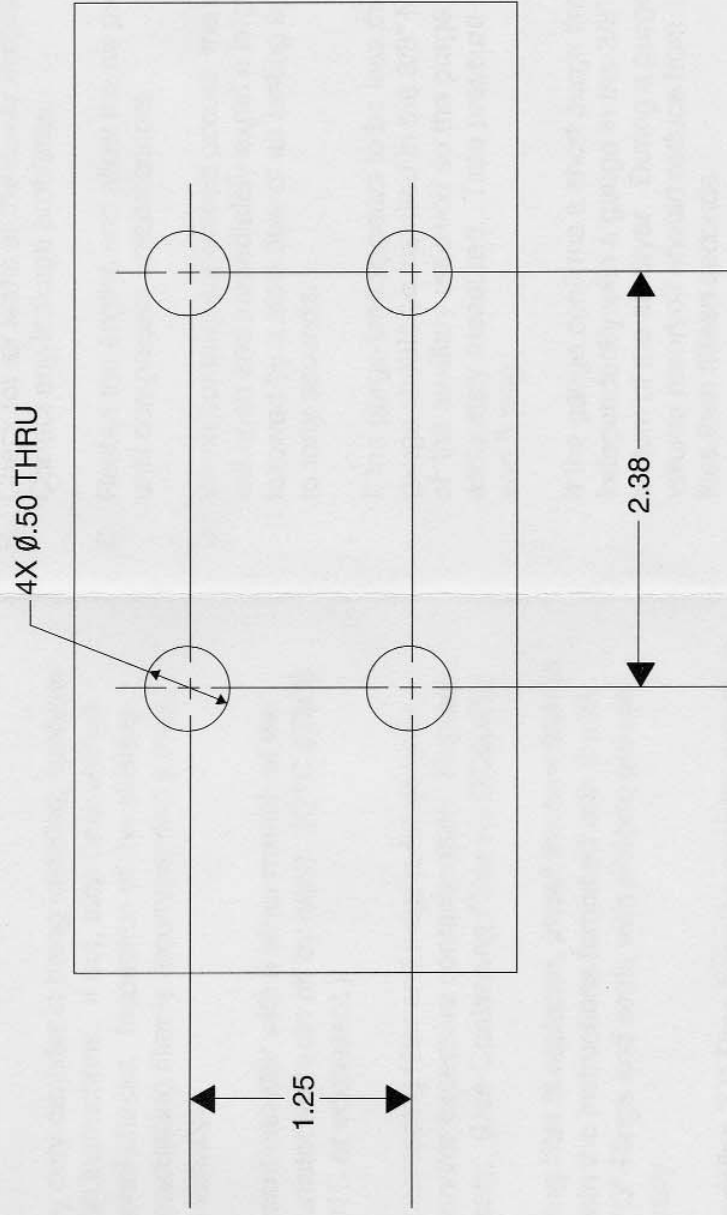
If the gauge confirms a short purge time, test the air dryer independently with a gauge in the 3/8" NPT port on the bottom of the air dryer. During a purge cycle, the purge volume reservoir should reduce from 120 to 5 psig in no less than fifteen seconds.

- E. Check and correct any other leaks in the air dryer piping to assure that the Pure Air Plus Dryer does not cycle excessively.

Haldex Commercial Vehicle Systems

North American Sales Division
Haldex Brake Products Corporation
10707 N.W. Airworld Drive
Kansas City, MO 64153-1215
Phone: (816) 891-2470
Fax: (816) 880-9766

North American Sales Division
Haldex Limited
525 Southgate Drive, Unit 1
Guelph, Ontario CANADA N1G 3W6
Phone: (519) 826-7723
Fax: (519) 826-9497



**MOUNTING TEMPLATE
PURGE RESERVOIR**