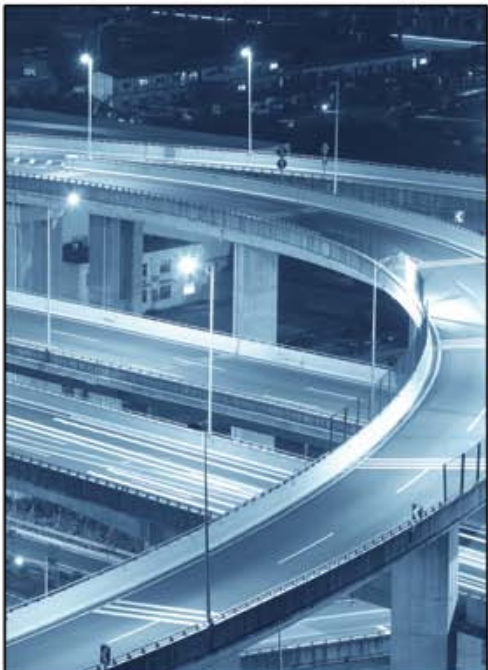




Innovative Vehicle Solutions
www.haldex.com

Monroe® Shock Absorbers Catalog

L00135W - 6/14



Important Notice

The products described within this literature, including without limitation, product features, specifications, designs, availability and pricing are subject to change by Haldex and its subsidiaries at any time without notice.

This document and other information from Haldex, its subsidiaries and authorized distributors provide product and/or system options for further investigation by users having technical expertise. It is important that you analyze all aspects of your application and review the information concerning the product or system, in the current literature or catalog. Due to the variety of operating conditions and applications for these products or systems, the user, through their own analysis and testing, is solely responsible for making the final selection of the products and systems and assuring that all performance, safety and warning requirements are met.

14 – Monroe® Shock Absorbers

Table of Contents	14-1
Part Number Index	14-2
General Information	
Foreword	14-3
Gas-Magnum® Cab	14-4
Gas-Magnum® 60	14-6
Gas-Magnum® 65	14-10
Gas-Magnum® RV & Utility	14-14
Monro-Magnum® 70	14-15
Stabilizer Cylinders	14-17
Parts Packages	14-18

14-MONROE ® SHOCK ABSORBERS

Part Number Index

Part Number	Type	Page #	Part Number	Type	Page #	Part Number	Type	Page #	Part Number	Type	Page #
S11866	S	14-18	SA65447	S	14-10	SA66152	S	14-4	SA66717	S	14-6
SA557030	S	14-14	SA65448	S	14-10	SA66154	S	14-4	SA66719	S	14-6
SA65101	S	14-10	SA65449	S	14-10	SA66157	S	14-4	SA66801	S	14-6
SA65102	S	14-10	SA65452	S	14-10	SA66159	S	14-4	SA66811	S	14-6
SA65103	S	14-10	SA65453	S	14-10	SA66178	S	14-4	SA66812	S	14-6
SA65105	S	14-10	SA65454	S	14-10	SA66179	S	14-4	SA66828	S	14-6
SA65106	S	14-10	SA65455	S	14-10	SA66186	S	14-4	SA66829	S	14-6
SA65107	S	14-10	SA65456	S	14-10	SA66189	S	14-4	SA66833	S	14-6
SA65108	S	14-10	SA65458	S	14-10	SA66193	S	14-4	SA66841	S	14-6
SA65109	S	14-10	SA65459	S	14-10	SA66195	S	14-4	SA66858	S	14-6
SA65110	S	14-10	SA65463	S	14-10	SA66196	S	14-4	SA66859	S	14-6
SA65111	S	14-10	SA65466	S	14-10	SA66402	S	14-6	SA66860	S	14-6
SA65112	S	14-10	SA65468	S	14-10	SA66405	S	14-6	SA66861	S	14-6
SA65113	S	14-10	SA65469	S	14-10	SA66407	S	14-6	SA66863	S	14-6
SA65114	S	14-10	SA65475	S	14-10	SA66408	S	14-6	SA66864	S	14-6
SA65115	S	14-10	SA65477	S	14-10	SA66409	S	14-6	SA66878	S	14-6
SA65116	S	14-10	SA65478	S	14-10	SA66412	S	14-6	SA66884	S	14-6
SA65118	S	14-10	SA65479	S	14-10	SA66418	S	14-6	SA66886	S	14-6
SA65119	S	14-10	SA65480	S	14-10	SA66419	S	14-6	SA66891	S	14-6
SA65120	S	14-10	SA65481	S	14-10	SA66422	S	14-6	SA66893	S	14-6
SA65121	S	14-10	SA65482	S	14-10	SA66423	S	14-6	SA66894	S	14-6
SA65122	S	14-10	SA65484	S	14-10	SA66424	S	14-6	SA66897	S	14-6
SA65123	S	14-10	SA65487	S	14-10	SA66425	S	14-6	SA66902	S	14-6
SA65124	S	14-10	SA65488	S	14-10	SA66426	S	14-6	SA66903	S	14-6
SA65128	S	14-10	SA65489	S	14-10	SA66427	S	14-6	SA66913	S	14-6
SA65133	S	14-10	SA65490	S	14-10	SA66428	S	14-6	SA66921	S	14-6
SA65138	S	14-10	SA65493	S	14-10	SA66429	S	14-6	SA66923	S	14-6
SA65139	S	14-10	SA65494	S	14-10	SA66430	S	14-6	SA66924	S	14-6
SA65140	S	14-10	SA65495	S	14-10	SA66431	S	14-6	SA66956	S	14-6
SA65147	S	14-10	SA65496	S	14-10	SA66432	S	14-6	SA66957	S	14-6
SA65148	S	14-10	SA65497	S	14-10	SA66433	S	14-6	SA66966	S	14-6
SA65149	S	14-10	SA65498	S	14-10	SA66434	S	14-6	SA66969	S	14-6
SA65150	S	14-10	SA65499	S	14-10	SA66435	S	14-6	SA74001	S	14-15
SA65153	S	14-10	SA65500	S	14-10	SA66436	S	14-6	SA74006	S	14-15
SA65155	S	14-10	SA65501	S	14-10	SA66502	S	14-6	SA74025	S	14-15
SA65156	S	14-10	SA65502	S	14-10	SA66504	S	14-6	SA74028	S	14-15
SA65157	S	14-10	SA65503	S	14-10	SA66601	S	14-6	SA74070	S	14-15
SA65158	S	14-10	SA65504	S	14-10	SA66602	S	14-6	SA74075	S	14-15
SA65159	S	14-10	SA65505	S	14-10	SA66603	S	14-6	SA74400	S	14-15
SA65160	S	14-10	SA65506	S	14-10	SA66605	S	14-6	SA74402	S	14-15
SA65161	S	14-10	SA65507	S	14-10	SA66606	S	14-6	SA74405	S	14-15
SA65162	S	14-10	SA65508	S	14-10	SA66607	S	14-6	SA74406	S	14-15
SA65163	S	14-10	SA65509	S	14-10	SA66608	S	14-6	SA74408	S	14-15
SA65177	S	14-10	SA65510	S	14-10	SA66609	S	14-6	SA74412	S	14-15
SA65400	S	14-10	SA65511	S	14-10	SA66610	S	14-6	SA74413	S	14-15
SA65401	S	14-10	SA65512	S	14-10	SA66613	S	14-6	SA74415	S	14-15
SA65402	S	14-10	SA65513	S	14-10	SA66615	S	14-6	SA74417	S	14-15
SA65404	S	14-10	SA65514	S	14-10	SA66618	S	14-6	SA74418	S	14-15
SA65405	S	14-10	SA65515	S	14-10	SA66626	S	14-6	SA74420	S	14-15
SA65406	S	14-10	SA65516	S	14-10	SA66627	S	14-6	SA74423	S	14-15
SA65407	S	14-10	SA65519	S	14-10	SA66628	S	14-6	SA74428	S	14-15
SA65408	S	14-10	SA65521	S	14-10	SA66629	S	14-6	SA74429	S	14-15
SA65409	S	14-10	SA65522	S	14-10	SA66630	S	14-6	SA74431	S	14-15
SA65410	S	14-10	SA65523	S	14-10	SA66633	S	14-6	SA74432	S	14-15
SA65411	S	14-10	SA65524	S	14-10	SA66634	S	14-6	SA74434	S	14-15
SA65412	S	14-10	SA65525	S	14-10	SA66636	S	14-6	SA74435	S	14-15
SA65415	S	14-10	SA65526	S	14-10	SA66637	S	14-6	SA74437	S	14-15
SA65416	S	14-10	SA65527	S	14-10	SA66638	S	14-6	SA74438	S	14-15
SA65417	S	14-10	SA65528	S	14-10	SA66639	S	14-6	SA74439	S	14-15
SA65418	S	14-10	SA66101	S	14-4	SA66646	S	14-6	SA74440	S	14-15
SA65419	S	14-10	SA66104	S	14-4	SA66648	S	14-6	SA74441	S	14-15
SA65420	S	14-10	SA66109	S	14-4	SA66653	S	14-6	SA74442	S	14-15
SA65421	S	14-10	SA66110	S	14-4	SA66656	S	14-6	SA74443	S	14-15
SA65422	S	14-10	SA66111	S	14-4	SA66660	S	14-6	SA74444	S	14-15
SA65423	S	14-10	SA66112	S	14-4	SA66666	S	14-6	SA74445	S	14-15
SA65427	S	14-10	SA66115	S	14-4	SA66667	S	14-6	SA74446	S	14-15
SA65428	S	14-10	SA66116	S	14-4	SA66668	S	14-6	SC2912	S	14-17
SA65429	S	14-10	SA66117	S	14-4	SA66670	S	14-6	SC2913	S	14-17
SA65430	S	14-10	SA66118	S	14-4	SA66672	S	14-6	SC2914	S	14-17
SA65431	S	14-10	SA66120	S	14-4	SA66674	S	14-6	SC2916	S	14-17
SA65432	S	14-10	SA66121	S	14-4	SA66683	S	14-6	SC2920	S	14-17
SA65433	S	14-10	SA66122	S	14-4	SA66684	S	14-6	SC2921	S	14-17
SA65434	S	14-10	SA66123	S	14-4	SA66694	S	14-6	SC2928	S	14-17
SA65435	S	14-10	SA66124	S	14-4	SA66707	S	14-6	SC2942	S	14-17
SA65436	S	14-10	SA66125	S	14-4	SA66708	S	14-6	SC2955	S	14-17
SA65439	S	14-10	SA66126	S	14-4	SA66710	S	14-6	SC2960	S	14-17
SA65440	S	14-10	SA66138	S	14-4	SA66712	S	14-6	SC2961	S	14-17
SA65441	S	14-10	SA66143	S	14-4	SA66713	S	14-6	SP119	S	14-18
SA65442	S	14-10	SA66145	S	14-4	SA66714	S	14-6			
SA65444	S	14-10	SA66147	S	14-4	SA66715	S	14-6			
SA65446	S	14-10	SA66149	S	14-4	SA66716	S	14-6			

Type "O" = OEM P/N, Type "S" = Service P/N

If OEM part # is not found on page listed, refer to the MCR for applicable cross reference.

PURPOSE OF THIS SECTION

This section is designed as a reference for Haldex new and remanufactured air brake system components and accessories, sold under the Haldex and Midland product names. Products described include all pertinent information needed to replace an OEM installed component or to help design an original installation. If there is a service number for a given part, it is noted in the product number table.

DESIGN FLEXIBILITY

The products presented in this section are described by function and usage. Technical data and mounting configurations are also provided. Throughout this section, reference is made to numerous specific OEM applications. This section is not, however, intended to be a mutually exclusive listing of all part numbers and designs available. Should the need for a design not presented occur, contact your Haldex sales representative for additional information.

WARRANTY INFORMATION

Proper service and repair are important to the safe, reliable operation of any motor vehicle. To prevent personal injury and/or vehicle damage, careful and cautious service procedures recommended by the vehicle manufacturer should be followed by anyone servicing a motor vehicle. For details on warranty of Haldex air brake system components and accessories, refer to L20221 Aftermarket Warranty Policy. For warranty returns, use L90005 Warranty Adjustment Form. To obtain further information, visit the www.haldex.com website, select **North America/English** in drop down box then search for **Warranty**.

ORDERING PROCEDURE

Most customers can place electronic orders on the www.haldex.com website by obtaining a username and password or by using EDI. For additional information about electronic orders or to place an order by phone or fax, contact Customer Service in U.S. or Canada at numbers listed below:

U.S. Customer Service:

Phone: 800-643-2374
 Fax: 800-533-1941
 Mail: Haldex Brake Products Corporation
 Attn: Customer Service Department
 10930 N. Pomona Ave.
 Kansas City, MO 64153

Canada Customer Service:

Phone: 800-267-9247
 Fax: 519-621-3924
 Mail: Haldex Limited
 Canadian Distribution Centre
 Attn: Customer Service Department
 500 Pinebush Road, Unit 1
 Cambridge, Ontario N1T 0A5

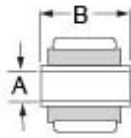
IMPORTANT NOTICE

The data listed herein is correct to the best of Haldex's knowledge and belief, having been compiled from reliable and official sources of information. However, HALDEX CANNOT ASSUME ANY RESPONSIBILITY for possible error or misapplication of the product. Final determination of the suitability of the products for the use contemplated by the Buyer is the sole responsibility of the Buyer. Haldex shall have no responsibility in connection with this suitability. It is not our intention to imply that any of the components in this catalog in connection with an engine make or model are made by any engine manufacturer.

Copyright 2014
 Haldex Brake Products Corporation
 10930 N. Pomona Ave.
 Kansas City, MO 64153

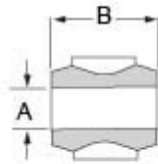
All rights reserved.
 Materials may only be reproduced with written permission of Haldex.

Gas-Magnum® Cab



Bushing & Sleeve

Code	A	B
LS4	10MM	1-3/8
LS8	10MM	2
LS14	7/16	1-3/8
LS23	12MM	1-1/4
LS24	12MM	1-3/8
LS30	12MM	1-7/8
LS37	1/2	1-3/8
LS72	7/16	2
LS73	7/16	2-1/2
LS76	1/2	2-3/8
LS77	1/2	2-7/16
LS79	5/8-16MM	1-3/8
LS80	5/8-16MM	1-3/4
LS84	12MM	2-3/8
LS96	1/2	1-7/8
LS97	1/2	2-3/4
LS98	5/8-16MM	3



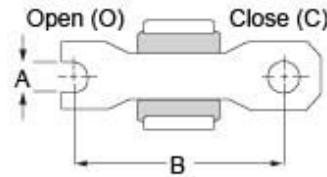
Loop Mounting

Code	A	B
L1	5/8	1-5/16



Stem

Code	Thread
S4	3/8-16



Cross Pin Mounting

Code	End	A	B
XP7	C	5/16	2-7/8
XP8	O	5/16	3



Packed one per box

Gas-Magnum shock specifically for controlling cab vibration.
2" or 2-3/8" Reserve Tube (when required)
1-3/8" Bore, 5/8" Piston Rod

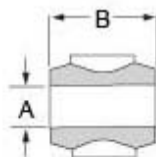
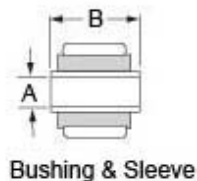
SKU#	Product Description	Upper Mount Code	Lower Mount Code	Compress Length	Extend Length	Travel Length	Dust Shield
SA66101	Gas-Magnum® Cab	LS80	LS80	7-3/8"	9-3/4"	2-3/8"	Yes
SA66104	Gas-Magnum® Cab	LS14	LS14	7-1/4"	9-3/8"	2-1/8"	No
SA66109	Gas-Magnum® Cab	LS77	LS77	8"	9-3/8"	1-3/8"	Yes
SA66110	Gas-Magnum® Cab	S4	S4	9"	11-3/4"	2-3/4"	No
SA66111	Gas-Magnum® Cab	LS14	LS14	8"	11-3/8"	3-3/8"	No
SA66112	Gas-Magnum® Cab	LS76	LS76	8-1/4"	11"	2-3/4"	Yes
SA66115	Gas-Magnum® Cab	LS30	S4	8-1/4"	11-3/8"	3-1/8"	Yes
SA66116	Gas-Magnum® Cab	LS79	S4	8-5/8"	10-3/8"	3-1/8"	Yes
SA66117	Gas-Magnum® Cab	LS37	S4	8"	9-1/2"	1-1/2"	Yes
SA66118	Gas-Magnum® Cab	LS84	L1	7-5/8"	10-5/8"	3"	Yes
SA66120	Gas-Magnum® Cab	LS23	LS23	6-1/2"	8-1/2"	2"	Yes
SA66121	Gas-Magnum® Cab	LS84	L1	9"	12-3/8"	3-3/8"	Yes
SA66122	Gas-Magnum® Cab	LS84	L1	7-5/8"	10-5/8"	3"	Yes
SA66123	Gas-Magnum® Cab	LS79	LS80	7-1/4"	9-3/8"	2-1/8"	No

Gas-Magnum® Cab

14-MONROE® SHOCK ABSORBERS

SA66124	Gas-Magnum® Cab	LS96	LS97	8-5/8"	10-3/8"	1-3/4"	Yes
SA66125	Gas-Magnum® Cab	LS98	LS80	10"	12-7/8"	2-7/8"	Yes
SA66126	Gas-Magnum® Cab	LS14	LS14	7-3/8"	9-3/8"	2"	Yes
SA66138	Gas-Magnum® Cab	SPEC	SPEC	19-3/4"	33-1/16"	13-5/16"	No
SA66143	Gas-Magnum® Cab	L1	L1	11-3/4"	18-1/2"	6-3/4"	No
SA66145	Gas-Magnum® Cab	LS79	LS79	9-1/8"	13-1/8"	4"	Yes
SA66147	Gas-Magnum® Cab	LS77	LS77	8-5/8"	10-3/8"	1-3/4"	Yes
SA66149	Gas-Magnum® Cab	LS37	LS37	9-1/4"	14"	4-3/4"	Yes
SA66152	Gas-Magnum® Cab	L1	L1	7-7/8"	11-1/4"	3-3/8"	Yes
SA66154	Gas-Magnum® Cab	S4	S4	7-1/4"	10-1/2"	3-1/4"	Yes
SA66157	Gas-Magnum® Cab	XP7	S4	7-1/8"	9-3/4"	2-5/8"	Yes
SA66159	Gas-Magnum® Cab	LS24	LS24	8-1/2"	11-1/2"	3"	Yes
SA66178	Gas-Magnum® Cab	LS14	LS72	6-5/8"	8-3/8"	1-3/4"	Yes
SA66179	Gas-Magnum® Cab	XP7	XP7	6-1/8"	7-7/8"	1-3/4"	Yes
SA66186	Gas-Magnum® Cab	L1	S4	9-3/8"	11-1/4"	1-7/8"	Yes
SA66189	Gas-Magnum® Cab	XP8	S4	8-3/4"	10-7/8"	2-1/8"	Yes
SA66193	Gas-Magnum® Cab	LS8	LS8	7-3/8"	9-3/4"	2-3/8"	No
SA66195	Gas-Magnum® Cab	LS4	LS4	10-1/2"	14"	3-1/2"	Yes
SA66196	Gas-Magnum® Cab	LS30	S4	9-1/2"	14-7/16"	3-3/4"	Yes

Gas-Magnum® 60



Code	A	B	Code	A	B
LS38	1/2	1-1/2	LS71	3/4	2-3/4
LS39	1/2	1-5/8	LS75	20MM	1-3/4
LS41	1/2	2-1/4	LS80	5/8-16MM	1-3/4
LS50	5/8-16MM	1-1/2	LS82	5/8-16MM	1-1/2
LS53	5/8-16MM	2	LS83	18MM	2
LS54	3/4	1-3/4	LS86	3/4	2-5/16
LS61	5/8-16MM	4	LS87	5/8-16MM	3-9/16
LS62	5/8-16MM	2-9/16			

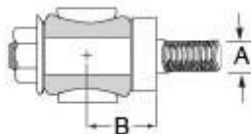
Code	A	B
L1	5/8	1-5/16
L2	11/16	1-9/16
L3	3/4	1-9/16
L4	1	1-3/4

Code	Thread
S4	3/8 - 16
S5	1/2 - 13
S6	5/8 - 11



Packed one per box

Cantilever Pin Mounting



Code	A	B
CP5	5/8	1-5/16

**Gas-Charged shock for class 3 to 8 vehicles.
2" or 2-3/8" Reserve Tube (when required)
1-3/8" Bore, 5/8" Diameter Piston Rod (on most applications)**

SKU#	Product Description	Upper Mount Code	Lower Mount Code	Compress Length	Extend Length	Travel Length	Dust Shield
SA66402	Gas-Magnum®-60	LS54	LS53	15-5/8"	25-1/8"	9-1/2"	Yes
SA66405	Gas-Magnum® 60	LS71	S6	11-7/8"	18-7/8"	7"	Yes
SA66407	Gas-Magnum® 60	S6	LS54	14"	22-1/4"	8-1/4"	Yes
SA66408	Gas-Magnum® 60	S6	LS71	14-1/8"	21-3/4"	7-5/8"	Yes
SA66409	Gas-Magnum® 60	LS83	LS38	15-1/8"	24"	8-7/8"	Yes
SA66412	Gas-Magnum® 60	LS53	LS53	11-11/16"	18-1/8"	6-1/2"	No
SA66418	Gas-Magnum® 60, Freightliner Columbia, FLC, FLD	LS86	LS86	14-23/32"	22-7/8"	8-5/32"	Yes
SA66419	Gas-Magnum® 60, International Transtar/ProStar	LS87	LS61	14-7/16"	22-5/8"	8-3/16"	No
SA66422	Gas-Magnum® 60, International Bus Chassis, DuraStar 4000	LS53	LS53	13-5/16"	20-5/16"	7-1/16"	No
SA66423	Gas-Magnum® 60, Ford AeroMax, L, LT, LTS; Kenworth C, K, T, W Series	L4	L4	16.266"	26-23/32"	10.453"	Yes
SA66424		S6	S6	12"	18-13/16"	6-3/4"	No

	Gas-Magnum® 60, Kenworth Drive Axles						
SA66425	Gas-Magnum® 60, Freightliner Truck Business Class Front	LS86	LS86	14-3/4"	22-7/8"	8-3/16"	No
SA66426	Gas-Magnum® 60, International Series 9100I, 9200I, 9400I Front	LS53	LS54	13-1/8"	20"	6-15/16"	No
SA66427	Gas-Magnum® 60, Thomas Built Bus Type D Front	S6	LS54	13-1/16"	20-3/8"	7-1/4"	No
SA66428	Gas-Magnum® 60, Peterbilt 330 Drive Axle Rear	S6	L4	16-5/8"	27-3/8"	10-3/4"	No
SA66429	Gas-Magnum® 60, Peterbilt 357 Drive Axle Rear	S6	L4	15"	24"	9"	No
SA66430	Gas-Magnum® 60, Autocar, Volvo/White Rear	L3	L3	17-3/8"	28-3/8"	11"	No
SA66431	Gas-Magnum® 60, Mack Truck CX, CXN Vision Rear	LS61	LS62	15-11/16"	25"	10-11/16"	No
SA66432	Gas-Magnum® 60, Volvo/White VN Series Rear	S6	LS86	14-1/8"	22-5/16"	8-3/16"	No
SA66433	Gas-Magnum® 60, Freightliner Century Class Front	LS86	LS86	14-3/4"	22-7/8"	8-3/16"	No
SA66434	Gas-Magnum® 60, Chevrolet T Series, Neoplan Bus Front	S6	S6	15-11/16"	26-1/16"	10-7/16"	No
SA66435	Gas-Magnum® 60, Peterbilt 270 Series Front	L3	L3	13-1/4"	20-5/16"	7-1/16"	No
SA66436	Gas-Magnum® 60, Kenworth C500, W9000 Rear	LS87	LS80	18-5/16"	30-1/2"	12-3/16"	No
SA66502	Gas-Magnum® 60	LS54	LS54	13-7/8"	22-1/2"	8-5/8"	Yes
SA66504	Gas-Magnum® 60 - Spring over Steering Damper	SPEC	SPEC	13-7/8"	22-3/8"	8-1/2"	Yes
SA66601	Gas-Magnum® 60	S4	LS82	13-1/2"	22-7/8"	9-3/8"	Yes
SA66602	Gas-Magnum® 60	S4	L1	12-1/2"	20-7/8"	8-3/8"	Yes
SA66603	Gas-Magnum® 60	S5	S5	12-1/4"	20-1/8"	7-7/8"	Yes
SA66605	Gas-Magnum® 60	S5	S5	12-7/8"	21-3/8"	8-1/2"	Yes
SA66606	Gas-Magnum® 60	LS53	LS53	17"	27-1/4"	10-1/4"	Yes
SA66607	Gas-Magnum® 60	LS54	LS54	9-7/8"	13"	3-1/8"	Yes
SA66608	Gas-Magnum® 60	LS54	LS54	11-1/2"	16-3/8"	4-7/8"	Yes
SA66609	Gas-Magnum® 60	LS54	S6	13-3/8"	21-3/4"	8-3/8"	Yes
SA66610	Gas-Magnum® 60	LS54	LS54	12-1/2"	18-1/4"	5-3/4"	Yes
SA66613	Gas-Magnum® 60	LS54	LS54	16-7/8"	27"	10-1/8"	Yes
SA66615	Gas-Magnum® 60	LS71	S6	13-5/8"	22-1/4"	8-5/8"	Yes
SA66618	Gas-Magnum® 60	L3	L3	13-3/8"	21-1/2"	8-1/8"	Yes
SA66626	Gas-Magnum® 60	S6	S6	15-1/8"	25-7/8"	10-3/4"	Yes
SA66627	Gas-Magnum® 60	LS54	LS54	10-3/8"	14"	3-5/8"	Yes
SA66628	Gas-Magnum® 60	S6	S6	16-7/8"	29-1/2"	12-5/8"	Yes
SA66629	Gas-Magnum® 60	L3	L3	18-5/8"	32-1/8"	13-1/2"	Yes
SA66630	Gas-Magnum® 60	L3	L3	14-1/4"	22-1/2"	8-1/4"	Yes
SA66633	Gas-Magnum® 60	LS54	LS54	13-3/4"	20-3/4"	7"	Yes
SA66634	Gas-Magnum® 60	LS54	LS54	12-1/8"	17-1/2"	5-3/8"	Yes
SA66636	Gas-Magnum® 60	LS54	LS54	13-3/8"	20"	6-5/8"	Yes

14-MONROE® SHOCK ABSORBERS

Gas-Magnum® 60

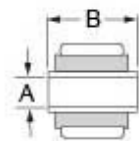
SA66637	Gas-Magnum® 60	L1/CP5	LS54	14-1/8"	23"	8-7/8"	Yes
SA66638	Gas-Magnum® 60	LS54	LS54	16-1/2"	26-3/8"	9-7/8"	Yes
SA66639	Gas-Magnum® 60	S4	L1	13-1/4"	22"	8-3/4"	Yes
SA66646	Gas-Magnum® 60	L3	L3	15-1/4"	25"	9-3/4"	Yes
SA66648	Gas-Magnum® 60	LS54	S6	13-5/8"	20-7/8"	7-1/4"	Yes
SA66653	Gas-Magnum® 60	S4	L3	14"	23-1/4"	9-1/4"	Yes
SA66656	Gas-Magnum® 60	LS54	S6	14-1/2"	22-3/8"	7-7/8"	Yes
SA66660	Gas-Magnum® 60	LS54	L4	12-3/4"	18-1/2"	5-3/4"	Yes
SA66666	Gas-Magnum® 60	LS38	LS38	13-7/8"	22-7/8"	9"	Yes
SA66667	Gas-Magnum® 60	LS38	LS38	12-1/4"	19-3/4"	7-1/2"	Yes
SA66668	Gas-Magnum® 60	L3	L3	15-3/4"	26"	10-1/4"	Yes
SA66670	Gas-Magnum® 60	L3	L3	14-7/8"	24-1/4"	9-3/8"	Yes
SA66672	Gas-Magnum® 60	LS54	LS54	17-5/8"	30"	12-3/8"	Yes
SA66674	Gas-Magnum® 60	S5	L4	14-3/4"	24-1/2"	9-3/4"	Yes
SA66683	Gas-Magnum® 60	LS53	LS53	15-1/8"	23-5/8"	8-1/2"	Yes
SA66684	Gas-Magnum® 60	L4	L4	15"	24-1/8"	9-1/8"	Yes
SA66694	Gas-Magnum® 60	L1	L1	14-3/8"	23-7/8"	9-1/2"	Yes
SA66707	Gas-Magnum® 60	L4	L4	16"	25-1/2"	9-1/2"	Yes
SA66708	Gas-Magnum® 60	LS53	LS53	16-1/4"	26-3/4"	10-1/2"	Yes
SA66710	Gas-Magnum® 60	LS54	LS54	18"	29-1/4"	11-1/4"	Yes
SA66712	Gas-Magnum® 60	L4	L4	19"	31-7/8"	12-7/8"	Yes
SA66713	Gas-Magnum® 60	S5	LS75	18-1/4"	31-7/8"	13-5/8"	Yes
SA66714	Gas-Magnum® 60	L3	L3	14-3/8"	23-3/8"	9"	Yes
SA66715	Gas-Magnum® 60	LS80	S6	14-1/8"	23-1/8"	9"	Yes
SA66716	Gas-Magnum® 60	L4	L4	13-5/8"	21-1/2"	7-7/8"	Yes
SA66717	Gas-Magnum® 60	S4	L3	14-1/4"	23-3/8"	9-1/8"	Yes
SA66719	Gas-Magnum® 60	LS54	LS54	19-3/8"	33-1/2"	14-1/8"	Yes
SA66801	Gas-Magnum® 60	S4	L1	11-7/8"	19-1/4"	7-3/8"	Yes
SA66811	Gas-Magnum® 60	L3	L3	16-1/8"	26-1/2"	10-3/8"	No
SA66812	Gas-Magnum® 60	L2	L2	14-7/8"	25"	10-1/8"	Yes
SA66828	Gas-Magnum® 60	L3	L3	13-1/8"	21-1/8"	8"	Yes
SA66829	Gas-Magnum® 60	S4	S4	11-1/2"	18-3/4"	7-1/4"	Yes
SA66833	Gas-Magnum® 60	LS54	LS54	15-3/4"	24-3/4"	9"	Yes
SA66841	Gas-Magnum® 60	L3	L3	14-3/8"	23-1/2"	9-1/8"	Yes
SA66858	Gas-Magnum® 60	L2	L2	12"	19-1/4"	7-1/4"	Yes
SA66859	Gas-Magnum® 60	L2	L2	16-1/8"	27-1/8"	11"	Yes
SA66860	Gas-Magnum® 60	L3	L3	15-1/8"	24-1/2"	9-3/8"	Yes
SA66861	Gas-Magnum® 60	L3	L3	17-1/4"	28-5/8"	11-3/8"	Yes
SA66863	Gas-Magnum® 60	L3	L3	18"	30-3/4"	12-3/4"	Yes
SA66864	Gas-Magnum® 60	L4	L4	17-1/4"	28-1/4"	11"	Yes
SA66878	Gas-Magnum® 60	LS54	LS54	14-5/8"	23-7/8"	9-1/4"	Yes
SA66884	Gas-Magnum® 60	LS54	LS54	17-1/8"	27-1/2"	10-3/8"	Yes
SA66886	Gas-Magnum® 60	LS54	LS54	14"	21-3/8"	7-3/8"	Yes
SA66891	Gas-Magnum® 60	L4	L4	16-3/8"	26-3/4"	10-3/8"	Yes

Gas-Magnum® 60

14-MONROE® SHOCK ABSORBERS

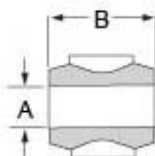
SA66893	Gas-Magnum® 60	LS54	LS54	11-7/8"	17"	5-1/8"	Yes
SA66894	Gas-Magnum® 60	LS54	LS54	17-7/8"	29-1/4"	11-3/8"	Yes
SA66897	Gas-Magnum® 60	LS54	LS54	15-1/4"	23-7/8"	8-5/8"	Yes
SA66902	Gas-Magnum® 60	L1	L1	14-1/8"	23-7/8"	9-3/4"	Yes
SA66903	Gas-Magnum® 60	S4	S4	12-3/4"	21-3/4"	9"	Yes
SA66913	Gas-Magnum® 60	L1/CP5	LS54	15"	24-7/8"	9-7/8"	Yes
SA66921	Gas-Magnum® 60	S5	S5	13-1/2"	23-5/8"	10-1/8"	Yes
SA66923	Gas-Magnum® 60	S5	S5	14"	24-1/8"	10-1/8"	Yes
SA66924	Gas-Magnum® 60	S5	LS53	16-1/8"	27-1/2"	11-3/8"	Yes
SA66956	Gas-Magnum® 60	LS53	LS53	15-3/4"	24-7/8"	9-1/8"	Yes
SA66957	Gas-Magnum® 60	L4	L4	15-1/4"	23-1/4"	8"	Yes
SA66966	Gas-Magnum® 60	L4	S6	15-1/2"	25-1/4"	9-3/4"	Yes
SA66969	Gas-Magnum® 60	LS54	LS54	15-3/8"	24-1/8"	8-3/4"	Yes

Gas-Magnum® 65



Bushing & Sleeve

Code	A	B
LS53	5/8-16MM	2
LS54	3/4	1-3/4
LS57	20MM	2
LS59	3/4	3-13/16
LS60	3/4	3-3/16
LS61	5/8-16MM	4
LS62	5/8-16MM	2-9/16
LS65	1	2
LS67	3/4	1-11/16
LS68	3/4	1-7/8
LS69	3/4	1-15/16
LS70	3/4	2-1/4
LS71	3/4	2-3/4
LS75	20MM	1-3/4
LS80	5/8-16MM	1-3/4
LS83	18MM	2
LS86	3/4	2-5/16
LS87	5/8-16MM	3-9/16
LS99	5/8-16MM	3-1/4



Loop Mounting

Code	A	B
L3	3/4	1-9/16
L4	1	1-3/4



Stem

Code	Thread
S6	5/8 - 11



Packed one per box

**Gas-Charged shock for air spring and taper leaf suspensions.
 Hardened 23/32" (18 mm) diameter chome piston rod
 2-3/8" (60.3mm) reserve tube
 1-3/4" (44.5 mm) piston bore**

SKU#	Product Description	Upper Mount Code	Lower Mount Code	Compress Length	Extend Length	Travel Length	Dust Shield
SA65101	Gas-Magnum® 65	L3	L3	12-5/8"	19-5/8"	7"	Yes
SA65102	Gas-Magnum® 65	L4	L4	16-5/8"	27"	10-3/8"	Yes
SA65103	Gas-Magnum® 65	L4	L4	16-3/8"	26-3/8"	10"	Yes
SA65105	Gas-Magnum® 65	LS80	S6	14"	22-7/8"	8-7/8"	Yes
SA65106	Gas-Magnum® 65	LS54	LS54	13-1/2"	21-3/8"	7-7/8"	Yes
SA65107	Gas-Magnum® 65	S6	LS54	12-7/8"	20-3/4"	7-7/8"	Yes
SA65108	Gas-Magnum® 65	LS54	LS54	14-1/2"	23-3/8"	8-7/8"	Yes
SA65109	Gas-Magnum® 65	LS54	LS54	14"	22-1/5"	8-1/2"	Yes
SA65110	Gas-Magnum® 65	LS54	LS54	15-1/4"	24-7/8"	9-5/8"	Yes
SA65111	Gas-Magnum® 65	L3	L3	17"	28-3/8"	11-3/8"	Yes
SA65112	Gas-Magnum® 65	L3	L3	15-1/8"	24-3/4"	9-5/8"	Yes
SA65113	Gas-Magnum® 65	L3	L3	13-1/4"	20-7/8"	7-5/8"	Yes

Gas-Magnum® 65

14-MONROE® SHOCK ABSORBERS

SA65114	Gas-Magnum® 65	L3	L3	16-1/8"	26-5/8"	10-1/2"	Yes
SA65115	Gas-Magnum® 65	S6	S6	13-1/8"	21-5/8"	8-1/2"	Yes
SA65116	Gas-Magnum® 65	L4	L4	15-3/8"	24-1/4"	8-7/8"	Yes
SA65118	Gas-Magnum® 65	L4	L4	16-1/2"	26-3/8"	9-7/8"	Yes
SA65119	Gas-Magnum® 65	LS54	LS54	13-1/8"	20-3/8"	7-1/4"	Yes
SA65120	Gas-Magnum® 65	LS54	LS54	16-1/8"	26-1/2"	10-3/8"	Yes
SA65121	Gas-Magnum® 65	LS54	LS54	14"	22-1/2"	8-1/2"	Yes
SA65122	Gas-Magnum® 65	L3	L3	18-3/4"	32"	13-1/4"	Yes
SA65123	Gas-Magnum® 65	L3	L3	14-7/8"	24-1/4"	9-3/8"	Yes
SA65124	Gas-Magnum® 65	LS67	LS69	15-1/2"	24-1/2"	9"	Yes
SA65128	Gas-Magnum® 65	LS62	L3	16-1/8"	25-1/2"	9-3/8"	Yes
SA65133	Gas-Magnum® 65	S6	LS54	12"	18-3/4"	6-3/4"	Yes
SA65138	Gas-Magnum® 65	LS59	LS60	17-1/4"	28-1/4"	11"	Yes
SA65139	Gas-Magnum® 65	LS86	LS86	14-1/2"	22-3/4"	8-1/4"	Yes
SA65140	Gas-Magnum® 65	LS86	LS86	14-3/8"	22-1/2"	8-1/8"	Yes
SA65147	Gas-Magnum® 65	LS53	LS54	13"	20-1/4"	7-1/4"	Yes
SA65148	Gas-Magnum® 65	LS86	LS86	14-5/8"	22-3/4"	8-1/8"	Yes
SA65149	Gas-Magnum® 65	L5	L5	17-3/8"	28-3/4"	11-3/8"	Yes
SA65150	Gas-Magnum® 65	LS53	LS53	16-1/4"	26-1/16"	9-13/16"	No
SA65153	Gas-Magnum® 65	S6	LS54	13-1/2"	21-1/2"	8"	Yes
SA65155	Gas-Magnum® 65	LS83	LS83	13-1/4"	20-3/8"	7-1/8"	Yes
SA65156	Gas-Magnum® 65	LS71	LS54	15-9/16"	25-3/8"	9-13/16"	No
SA65157	Gas-Magnum® 65	LS53	LS54	13-1/4"	20-3/4"	7-9/16"	Yes
SA65158	Gas-Magnum® 65	LS53	LS54	13-1/4"	20-3/4"	7-9/16"	Yes
SA65159	Gas-Magnum® 65	SPEC	L4	15-7/8"	25-7/8"	10"	Yes
SA65160	Gas-Magnum® 65	LS53	S6	13-7/8"	22-9/16"	8-3/4"	Yes
SA65161	Gas-Magnum® 65	S6	S6	16-15/16"	29-5/16"	12-3/8"	No
SA65162	Gas-Magnum® 65	LS70	LS70	13-11/16"	21-7/16"	7-3/4"	Yes
SA65163	Gas-Magnum® 65	LS53	LS54	12-15/16"	20-1/4"	7-5/16"	Yes
SA65177	Gas-Magnum® 65, 2010 Peterbilt 387	L3	L3	13-1/16"	20-7/16"	7-3/8"	No
SA65400	Gas-Magnum® 65	S6	L4	17-3/8"	26-3/4"	9-3/8"	Yes
SA65401	Gas-Magnum® 65	LS54	LS54	17-7/8"	29"	11-1/8"	Yes
SA65402	Gas-Magnum® 65	S6	L4	15"	23-1/2"	8-1/2"	Yes
SA65404	Gas-Magnum® 65	S6	S6	12"	18-1/4"	6-1/4"	Yes
SA65405	Gas-Magnum® 65	L3	L3	13-1/8"	19-1/2"	6-3/8"	Yes
SA65406	Gas-Magnum® 65	L3	L3	17-3/8"	28"	10-5/8"	Yes
SA65407	Gas-Magnum® 65	L4	L4	15-3/8"	23-5/8"	8-1/4"	Yes
SA65408	Gas-Magnum® 65	S6	LS71	14-1/8"	21-3/4"	7-5/8"	Yes
SA65409	Gas-Magnum® 65	LS53	LS53	15-3/4"	24-3/4"	9"	Yes
SA65410	Gas-Magnum® 65	L4	L4	12-1/4"	17-1/4"	5"	Yes
SA65411	Gas-Magnum® 65	LS54	LS54	16-3/8"	26"	9-5/8"	Yes
SA65412	Gas-Magnum® 65	LS54	LS54	15-3/4"	24-5/8"	8-7/8"	Yes
SA65415	Gas-Magnum® 65	L3	L3	16-7/8"	26-3/4"	9-7/8"	Yes

14-MONROE® SHOCK ABSORBERS

Gas-Magnum® 65

SA65416	Gas-Magnum® 65	LS54	LS54	12"	17-1/4"	5-1/4"	Yes
SA65417	Gas-Magnum® 65	LS65	LS65	11-5/8"	14-3/4"	3-1/8"	Yes
SA65418	Gas-Magnum® 65	LS54	LS54	14"	21"	7"	Yes
SA65419	Gas-Magnum® 65	LS54	LS54	11-5/8"	16-1/2"	4-7/8"	Yes
SA65420	Gas-Magnum® 65	LS54	LS54	18-1/8"	29-1/2"	11-3/8"	Yes
SA65421	Gas-Magnum® 65	LS54	LS54	15-1/2"	24-1/4"	8-3/4"	Yes
SA65422	Gas-Magnum® 65	L4	LS54	12-5/8"	18-1/8"	5-1/2"	Yes
SA65423	Gas-Magnum® 65	LS54	L4	14-1/4"	20-7/8"	6-5/8"	Yes
SA65427	Gas-Magnum® 65	LS54	LS54	19"	31-3/8"	12-3/8"	Yes
SA65428	Gas-Magnum® 65	LS54	LS54	16-3/8"	25-3/4"	9-3/8"	Yes
SA65429	Gas-Magnum® 65	L3	L3	15-7/8"	24-3/4"	8-7/8"	Yes
SA65430	Gas-Magnum® 65	L4	L4	13-3/8"	19-3/8"	6"	Yes
SA65431	Gas-Magnum® 65	LS54	LS54	15-3/8"	23-3/4"	8-3/8"	Yes
SA65432	Gas-Magnum® 65	LS54	LS54	13-3/4"	20-1/2"	6-3/4"	Yes
SA65433	Gas-Magnum® 65	LS54	LS54	13-1/2"	20"	6-1/2"	Yes
SA65434	Gas-Magnum® 65	L3	L3	13-5/8"	20-1/4"	6-5/8"	Yes
SA65435	Gas-Magnum® 65	L4	L4	17-7/8"	28-1/4"	10-3/8"	Yes
SA65436	Gas-Magnum® 65	S6	S6	11-3/8"	16-7/8"	5-1/2"	Yes
SA65439	Gas-Magnum® 65	L4	L4	15-1/8"	21-1/2"	6-3/8"	Yes
SA65440	Gas-Magnum® 65	S6	L4	16-1/8"	24-1/4"	8-1/8"	Yes
SA65441	Gas-Magnum® 65	L4	L4	18-3/4"	28-1/8"	9-3/8"	Yes
SA65442	Gas-Magnum® 65	L4	L4	17"	25-5/8"	8-5/8"	Yes
SA65444	Gas-Magnum® 65	S6	L4	15"	23-1/4"	8-1/4"	Yes
SA65446	Gas-Magnum® 65	L4	L4	18-7/8"	30-1/4"	11-3/8"	Yes
SA65447	Gas-Magnum® 65	S6	L4	18-5/8"	29"	10-3/8"	Yes
SA65448	Gas-Magnum® 65	L4	L4	17"	25-5/8"	8-5/8"	Yes
SA65449	Gas-Magnum® 65	L4	L4	15-3/4"	22-7/8"	7-1/8"	Yes
SA65452	Gas-Magnum® 65	L4	S6	15-1/8"	23-1/8"	8"	Yes
SA65453	Gas-Magnum® 65	LS54	LS54	17"	27"	10"	Yes
SA65454	Gas-Magnum® 65	LS68	LS68	15-1/2"	23-3/4"	8-1/4"	Yes
SA65455	Gas-Magnum® 65	L4	L4	14-3/8"	21-3/8"	7"	Yes
SA65456	Gas-Magnum® 65	L4	L4	20-1/4"	32-7/8"	12-5/8"	Yes
SA65458	Gas-Magnum® 65	LS54	LS54	12-1/4"	17-5/8"	5-3/8"	Yes
SA65459	Gas-Magnum® 65	LS54	LS54	17-3/8"	27-7/8"	10-1/2"	Yes
SA65463	Gas-Magnum® 65	L4	L4	20-3/8"	31-3/8"	11"	Yes
SA65466	Gas-Magnum® 65	L3	L3	15-3/4"	24-5/8"	8-7/8"	Yes
SA65468	Gas-Magnum® 65	S6	S6	15-5/8"	25-1/2"	9-7/8"	Yes
SA65469	Gas-Magnum® 65	S6	S6	13-1/8"	20-1/2"	7-3/8"	Yes
SA65475	Gas-Magnum® 65	LS53	S6	17-1/4"	28"	10-3/4"	Yes
SA65477	Gas-Magnum® 65	L4	L4	15-7/8"	23-1/8"	7-1/4"	Yes
SA65478	Gas-Magnum® 65	LS54	LS54	15"	23-1/4"	8-1/4"	Yes
SA65479	Gas-Magnum® 65	LS54	LS54	15-3/4"	24-5/8"	8-7/8"	Yes
SA65480	Gas-Magnum® 65	LS54	S6	16"	25-5/8"	9-5/8"	Yes
SA65481	Gas-Magnum® 65	LS54	LS54	16-1/2"	26-1/8"	9-5/8"	Yes

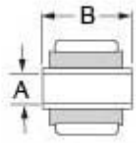
Gas-Magnum® 65

14-MONROE® SHOCK ABSORBERS

SA65482	Gas-Magnum® 65	LS54	LS54	17-3/8"	28"	10-5/8"	Yes
SA65484	Gas-Magnum® 65	LS54	LS54	18-1/8"	29-1/2"	11-3/8"	Yes
SA65487	Gas-Magnum® 65	LS53	LS53	15-1/2"	24-1/4"	8-3/4"	Yes
SA65488	Gas-Magnum® 65	LS53	LS53	18"	26"	8"	Yes
SA65489	Gas-Magnum® 65	LS59	LS60	13-1/2"	19-1/2"	6"	Yes
SA65490	Gas-Magnum® 65	LS59	LS60	15"	22-3/8"	7-3/8"	Yes
SA65493	Gas-Magnum® 65	LS54	LS54	12-1/8"	17-1/8"	5"	Yes
SA65494	Gas-Magnum® 65	LS61	LS53	15-1/2"	24-3/4"	9-1/4"	Yes
SA65495	Gas-Magnum® 65	LS87	LS80	18-3/8"	30-1/2"	12.1/8"	Yes
SA65496	Gas-Magnum® 65	LS54	S6	14-1/2"	23-1/4"	8-3/4"	Yes
SA65497	Gas-Magnum® 65	LS83	LS83	13-1/4"	18-7/8"	5-5/8"	Yes
SA65498	Gas-Magnum® 65	LS53	LS54	18-5/8"	25-3/8"	7"	Yes
SA65499	Gas-Magnum® 65	LS53	LS54	18-25/8"	25-3/8"	7"	Yes
SA65500	Gas-Magnum® 65	LS54	LS54	11-7/8"	17-1/2"	5-5/8"	Yes
SA65501	Gas-Magnum® 65	LS54	LS54	11-7/8"	17-1/2"	5-5/8"	Yes
SA65502	Gas-Magnum® 65	LS54	LS54	11"	15-3/4"	4-13/16"	Yes
SA65503	Gas-Magnum® 65	LS54	LS54	14-5/16"	22-1/8"	7-7/8"	Yes
SA65504	Gas-Magnum® 65	LS87	LS54	15-3/16"	24-1/8"	9"	Yes
SA65505	Gas-Magnum® 65	LS54	LS54	17-7/16"	28-9/16"	11-3/16"	Yes
SA65506	Gas-Magnum® 65	LS54	LS54	15-3/4"	25-1/4"	9-1/2"	Yes
SA65507	Gas-Magnum® 65	LS62	S6	13-13/16"	21-7/8"	8-1/8"	Yes
SA65508	Gas-Magnum® 65	LS62	S6	14-13/16"	23-15/16"	9-1/8"	Yes
SA65509	Gas-Magnum® 65	LS54	LS54	9-3/16"	12-1/16"	2-15/16"	Yes
SA65510	Gas-Magnum® 65	LS54	LS54	9-3/4"	13-1/4"	3-9/16"	Yes
SA65511	Gas-Magnum® 65	LS54	LS54	10-3/8"	14-1/2"	4-3/16"	Yes
SA65512	Gas-Magnum® 65	LS54	LS54	11-1/16"	15-15/16"	4-7/8"	Yes
SA65513	Gas-Magnum® 65	LS54	LS54	13"	19-1/2"	6-9/16"	Yes
SA65514	Gas-Magnum® 65	LS54	LS54	16-1/4"	25-15/16"	9-3/4"	No
SA65515	Gas-Magnum® 65	LS54	LS54	17-3/16"	28"	10-13/16"	Yes
SA65516	Gas-Magnum® 65	LS54	LS54	17-7/8"	29-1/4"	11-7/16"	No
SA65519	Gas-Magnum® 65	LS54	LS54	13-5/16"	20-1/16"	6-13/16"	No
SA65521	Gas-Magnum® 65	LS54	LS54	14"	20-7/16"	7-1/2"	No
SA65522	Gas-Magnum® 65	LS53	LS53	17-7/16"	28-5/8"	11-1/4"	No
SA65523	Gas-Magnum® 65	SPEC	S6	12-23/32"	19-3/16"	7-1/32"	Yes
SA65524	Gas-Magnum® 65	SPEC	S6	11-13/16"	17-7/8"	6-1/16"	No
SA65525	Gas-Magnum® 65	LS70	LS70	10-7/8"	15-1/4"	4-7/16"	Yes
SA65526	Gas-Magnum® 65	L3	LS86	18-5/8"	30-11/16"	12-1/6"	Yes
SA65527	Gas-Magnum® 65	LS53	LS57	13-13/16"	21-1/4"	7-1/2"	Yes
SA65528	Gas-Magnum® 65	S6	S6	15-15/16"	26-1/4"	10-3/8"	Yes

14-MONROE® SHOCK ABSORBERS Gas-Magnum® RV & Utility

Gas-Magnum® RV & Utility



Bushing & Sleeve



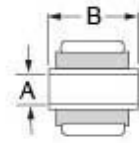
Packed one per box

Code	A	B
LS59	3/4	3-13/16
LS60	3/4	3-3/16

1-3/8" Bore
5/8" Piston Rod
2" or 2-3/8" Reserve Tube (when required)

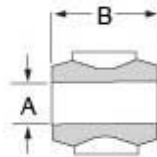
SKU#	Product Description	Upper Mount Code	Lower Mount Code	Compress Length	Extend Length	Travel Length	Dust Shield
SA557030	Gas-Magnum® RV and Utility Vehicles	LS59	LS60	14-3/4"	22-1/4"	7-1/2"	Yes

Monro-Magnum® 70



Bushing & Sleeve

Code	A	B
LS53	5/8-16MM	2
LS54	3/4	1-3/4
LS59	3/4	3-13/16
LS60	3/4	3-3/16
LS65	1	2
LS81	5/8-16MM	1-7/8
LS86	3/4	2-5/16
LS100	1-1/8	4
LS101	1-1/8	2-5/8



Loop Mounting

Code	A	B
L4	1	1-3/4



Stem

Code	Thread
S6	5/8 - 11



Packed one per box

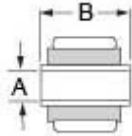
Medium or Heavy-Duty Truck, Tractor, Trailer or Bus
2-3/4" (69.85 mm) Reserve Tube
1-3/4" (44.5 mm) Piston Bore
Hardened 7/8" (22.23 mm) Diameter Piston Rod

SKU#	Product Description	Upper Mount Code	Lower Mount Code	Compress Length	Extend Length	Travel Length	Dust Shield
SA74001	Monro-Magnum®-70	L4	L4	15-1/8"	23-5/8"	8-1/2"	Yes
SA74006	Monro-Magnum® 70	L4	L4	14-1/4"	21-5/8"	7-3/8"	Yes
SA74025	Monro-Magnum® 70	L4	L4	15-1/2"	24-3/8"	8-7/8"	Yes
SA74028	Monro-Magnum® 70	L4	L4	14-5/8"	22-5/8"	8"	Yes
SA74070	Monro-Magnum® 70	S6	S6	10-3/8"	15-5/8"	5-1/4"	Yes
SA74075	Monro-Magnum® 70	L4	L4	13-1/4"	19-7/8"	6-5/8"	Yes
SA74400	Monro-Magnum® 70	L4	L4	16-7/8"	25-3/4"	8-7/8"	Yes
SA74402	Monro-Magnum® 70	S6	L4	15-7/8"	24-1/8"	8-1/4"	Yes
SA74405	Monro-Magnum® 70	L4	L4	12-5/8"	17-1/2"	4-7/8"	Yes
SA74406	Monro-Magnum® 70	L4	L4	14-1/4"	20-1/4"	6"	Yes
SA74408	Monro-Magnum® 70	L4	L4	15-3/4"	22-7/8"	7-1/8"	Yes
SA74412	Monro-Magnum® 70	L4	L4	18-3/8"	28-1/4"	9-7/8"	Yes
SA74413	Monro-Magnum® 70	L4	L4	16-7/8"	25-3/4"	8-7/8"	Yes
SA74415	Monro-Magnum® 70	S6	S6	17"	27-3/4"	10-3/4"	Yes
SA74417	Monro-Magnum® 70	S6	L4	15-1/8"	23-1/4"	8-1/8"	Yes
SA74418	Monro-Magnum® 70	S6	S6	19"	31-1/4"	12-1/4"	Yes
SA74420	Monro-Magnum® 70	LS53	LS53	16-1/2"	24-3/4"	8-1/4"	Yes
SA74423	Monro-Magnum® 70	L4	L4	13-5/8"	19-3/8"	5-3/4"	Yes

14-MONROE® SHOCK ABSORBERS**Monro-Magnum® 70**

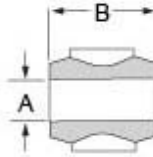
SA74428	Monro-Magnum® 70	L4	L4	11-3/4"	15-3/4"	4"	Yes
SA74429	Monro-Magnum® 70	LS54	LS54	15-1/8"	22-3/8"	7-1/4"	Yes
SA74431	Monro-Magnum® 70	LS81	S6	18-3/4"	30-1/2"	11-3/4"	Yes
SA74432	Monro-Magnum® 70	LS81	S6	16-5/8"	26-3/8"	9-3/4"	Yes
SA74434	Monro-Magnum® 70	S6	SPEC	16-1/4"	25-7/8"	9-5/8"	Yes
SA74435	Monro-Magnum® 70	LS65	LS65	15-1/8"	23-1/4"	8-3/16"	Yes
SA74437	Monro-Magnum® 70	LS65	LS65	13-1/2"	19-15/16"	19-1/2"	Yes
SA74438	Monro-Magnum® 70 Shock	LS65	LS65	13.810"	20.500"	6.690"	Yes
SA74439	Monro-Magnum® 70	S6	S6	14-13/16"	23-15/16"	9-1/8"	Yes
SA74440	Monro-Magnum® 70	LS65	S6	13-3/4"	21-1/8"	7-3/8"	Yes
SA74441	Monro-Magnum® 70	LS65	LS65	19-1/2"	31-7/8"	12-3/8"	Yes
SA74442	Monro-Magnum® 70	S6	S6	17-11/16"	29-5/8"	12"	Yes
SA74443	Monro-Magnum® 70	LS65	LS65	14-3/4"	23-3/4"	9"	Yes
SA74444	Monro-Magnum® 70	LS65	LS65	15-1/4"	24-9/16"	9-5/16"	Yes
SA74445	Monro-Magnum® 70	LS86	X-PIN	13-1/4"	21-3/4"	8-9/16"	Yes
SA74446	Monro-Magnum® 70	LS101	LS100	16-3/8"	26-3/8"	10"	No

Stabilizer Cylinders



Bushing & Sleeve

Code	A	B
LS4	10MM	1-3/8
LS24	12MM	1-3/8
LS26	12MM	1-1/2
LS37	1/2	1-3/8
LS38	1/2	1-1/2
LS39	1/2	1-5/8



Loop Mounting

Code	A	B
L1	5/8	1-5/16
L3	3/4	1-9/16



Stem

Code	Thread
S4	3/8 - 16



1/2" Piston Rod: Heavy-duty nitrocarburized rod

SKU#	Product Description	Upper Mount Code	Lower Mount Code	Compress Length	Extend Length	Travel Length	Dust Shield
SC2912	Magnum™ Steering Stabilizer Cylinder	S4	S4	12-5/8"	21-7/8"	9-1/4"	No
SC2913	Magnum™ Steering Stabilizer Cylinder	L1	L1	14-1/8"	24"	9-7/8"	No
SC2914	Magnum™ Steering Stabilizer Cylinder	L1	S4	12-3/4"	21-1/2"	8-3/4"	No
SC2916	Magnum™ Steering Stabilizer Cylinder	L1	L1	13-1/4"	22-1/4"	9"	No
SC2920	Magnum™ Steering Stabilizer Cylinder	SPEC	SPEC	16"	27-3/4"	11-3/4"	No
SC2921	Magnum™ Steering Stabilizer Cylinder	SPEC	SPEC	16-5/8"	28"	11-3/8"	No
SC2928	Magnum™ Steering Stabilizer Cylinder	L1	LS37	12"	19-1/2"	7-1/2"	No
SC2942	Magnum™ Steering Stabilizer Cylinder	L1	LS4	12-1/4"	20-1/8"	7-7/8"	No
SC2955	Magnum™ Steering Stabilizer Cylinder	LS26	LS26	13"	21-3/8"	8-3/8"	No
SC2960	Magnum™ Steering Stabilizer Cylinder	LS24	LS24	13-5/8"	22-5/8"	9"	No
SC2961	Magnum™ Steering Stabilizer Cylinder	LS39	LS38	14-1/2"	24-3/8"	9-7/8"	No

Parts Packages

Product Image Not Available

SKU#	Product Description	Application/Notes
S11866	Two Piece Loop/Bushing for Monroe® Shock Absorbers	Fits a 1-3/4" Outside Diameter Loop and over a 3/4" Diameter Pin One per package
SP119	Mounting Parts Package for Monroe Shock Absorbers	-

This page left blank intentionally.

Haldex develops and provides reliable and innovative solutions with focus on brake and air suspension products to the global commercial vehicle industry.

Listed on the Stockholm Stock Exchange, Haldex has annual sales of approximately 3.9 billion SEK and employs about 2,200 people.

Disclaimer: The products described within this literature, including without limitation, product features, specifications, designs, availability and pricing are subject to change by Haldex and its subsidiaries at any time without notice.

This document and other information from Haldex, its subsidiaries and authorized distributors provide product and/or system options for further investigation by users having technical expertise. It is important that you analyze all aspects of your application and review the information concerning the product or system, in the current literature or catalog. Due to the variety of operating conditions and applications for these products or systems, the user, through their own analysis and testing, is solely responsible for making the final selection of the products and systems and assuring that all performance, safety and warning requirements are met.

©2014, Haldex AB - This material may contain Haldex trademarks and third party trademarks, trade names, corporate logos, graphics and emblems which are the property of their respective companies. The contents of this document may not be copied, distributed, adapted or displayed for commercial purposes or otherwise without prior written consent from Haldex.

Innovative Vehicle Solutions

Austria

Haldex Wien Ges.m.b.H.
Vienna
Tel.: +43 1 8 69 27 97
Fax: +43 1 8 69 27 97 27
E-Mail: info.at@haldex.com

Belgium

Haldex N.V.
Balegem
Tel.: +32 9 363 90 00
Fax: +32 9 363 90 09
E-Mail: info.be@haldex.com

Brazil

Haldex do Brasil Ind. E Com. Ltda.
São José dos Campos
Tel.: +55 12 3935 4000
Fax: +55 12 3935 4018
E-Mail: info.brasil@haldex.com

Canada

Haldex Ltd.
Cambridge, Ontario
Tel.: +1 519 621 6722
Fax: +1 519 621 3924
E-Mail: info.ca@haldex.com

China

Haldex Vehicle Products Co. Ltd.
Suzhou
Tel.: +86 512 8885 5301
Fax: +86 512 8765 6066
E-Mail: info.cn@haldex.com

France

Haldex Europe SAS
Weyersheim
Tel.: +33 3 88 68 22 00
Fax: +33 3 88 68 22 09
E-Mail: info.eur@haldex.com

Germany

Haldex Brake Products GmbH
Heidelberg
Tel.: +49 6 221 7030
Fax: +49 6 221 703400
E-Mail: info.de@haldex.com

Hungary

Haldex Hungary Kft.
Szentlőrincskáta
Tel.: +36 29 631 400
Fax: +36 29 631 401
E-Mail: info.hu.eu@haldex.com

India

Haldex India Limited
Nasik
Tel.: +91 253 6699501
Fax: +91 253 2380729

Italy

Haldex Italia Srl.
Biassono
Tel.: +39 039 47 17 02
Fax: +39 039 27 54 309
E-Mail: info.it@haldex.com

Korea

Haldex Korea Ltd.
Seoul
Tel.: +82 2 2636 7545
Fax: +82 2 2636 7548
E-Mail: info.hkr@haldex.com

Mexico

Haldex de Mexico S.A. De C.V.
Monterrey
Tel.: +52 81 8156 9500
Fax: +52 81 8313 7090

Poland

Haldex Sp. z.o.o.
Praszka
Tel.: +48 34 350 11 00
Fax: +48 34 350 11 11
E-Mail: info.pl@haldex.com

Russia

OOO "Haldex RUS"
Moscow
Tel.: +7 495 747 59 56
Fax: +7 495 786 39 70
E-Mail: info.ru@haldex.com

Spain

Haldex España S.A.
Granollers
Tel.: +34 93 84 07 239
Fax: +34 93 84 91 218
E-Mail: info.es@haldex.com

Sweden

Haldex Brake Products AB
Landskrona
Tel.: +46 418 47 60 00
Fax: +46 418 47 60 01
E-Mail: info.se@haldex.com

United Kingdom

Haldex Ltd.
Newton Aycliffe
Tel.: +44 1325 310 110
Fax: +44 1325 311 834
E-Mail: info.gbay@haldex.com

Haldex Brake Products Ltd.
MIRA Technology Park
Tel.: +44 2476 400 300
Fax: +44 2476 400 301
E-Mail: info.gbre@haldex.com

USA

Haldex Brake Products Corp.
Kansas City
Tel.: +1 816 891 2470
Fax: +1 816 891 9447
E-Mail: info.us@haldex.com



www.haldex.com

L00135W US 6/14 WEB ONLY