

August 21, 2013

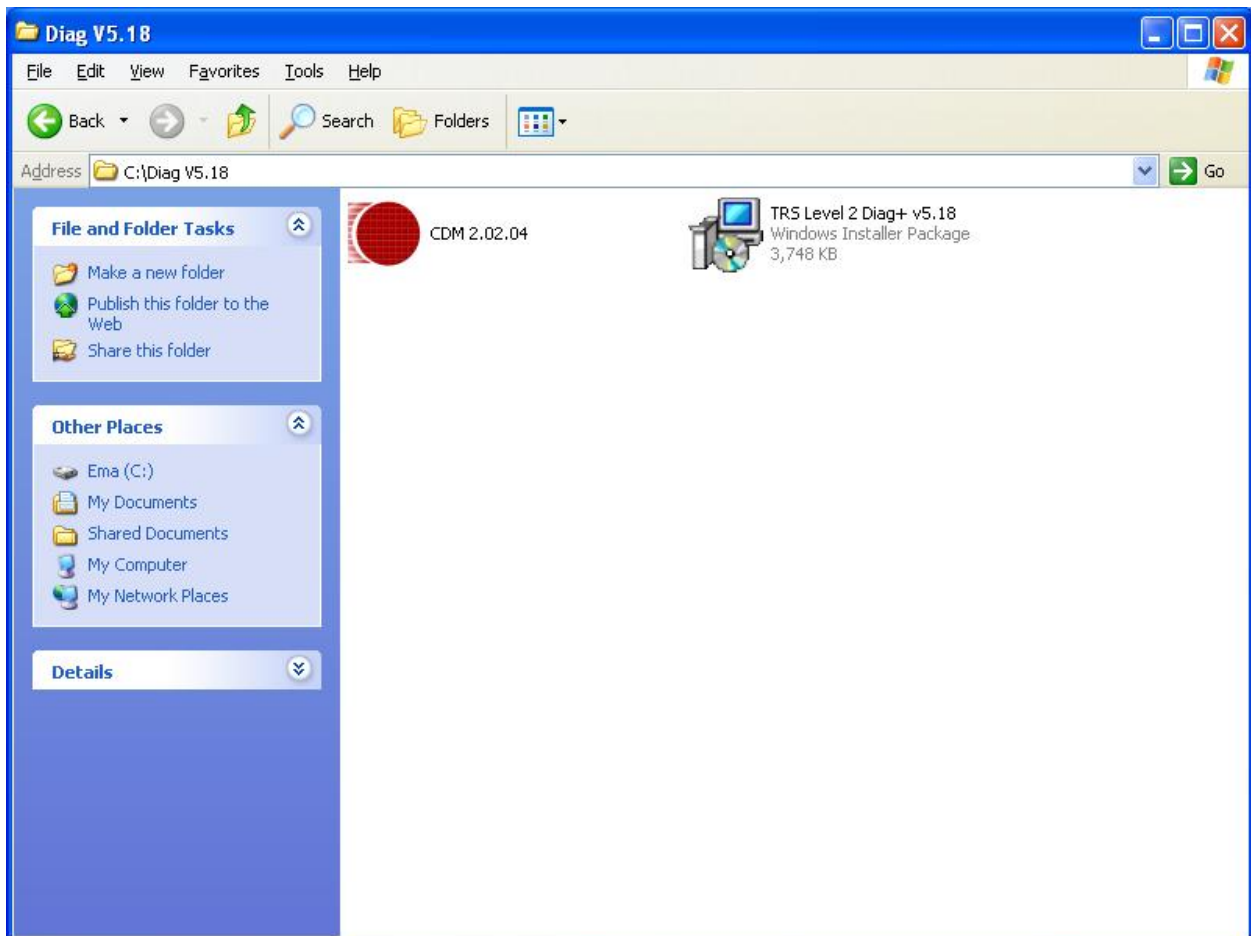
Installation instructions for TRS diagnostic software: Diag+ version: 5.18.

The installation of Diag+ version 5.18 is a two step process: First install the main program, then install the USB driver.

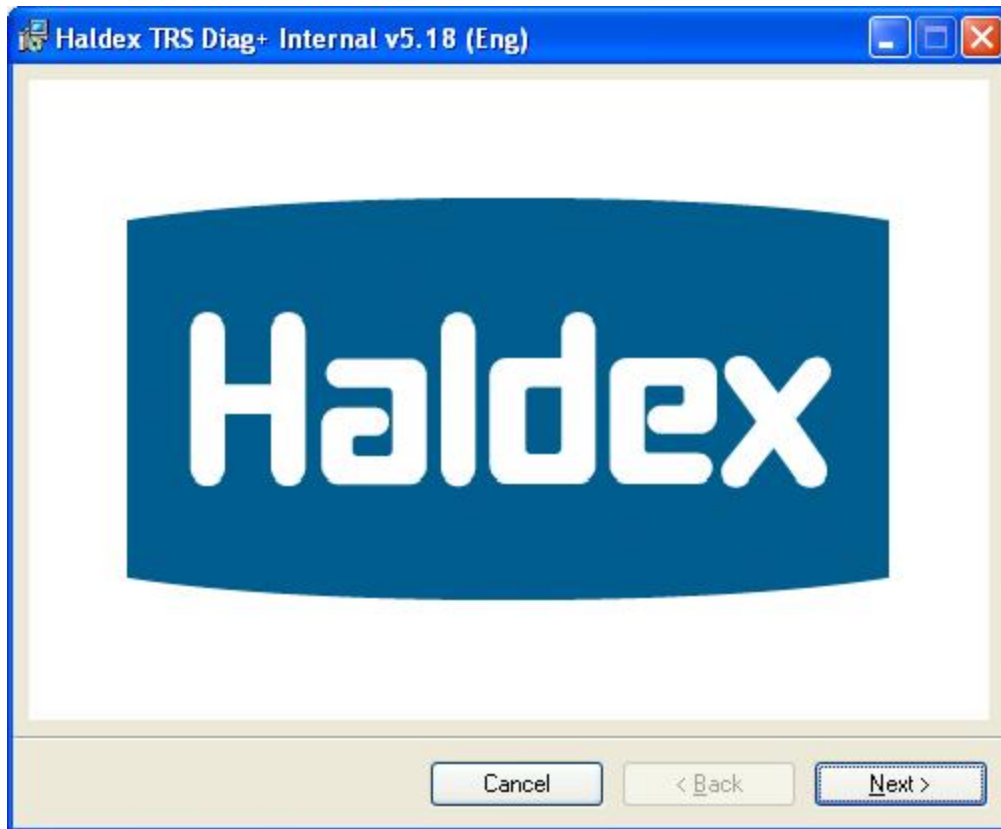
Download both the Diag+ program and the USB driver software from the Haldex web page.

Create a subdirectory for these files on the hard disc of the Windows™ based PC on which the diagnostic software is to installed upon.

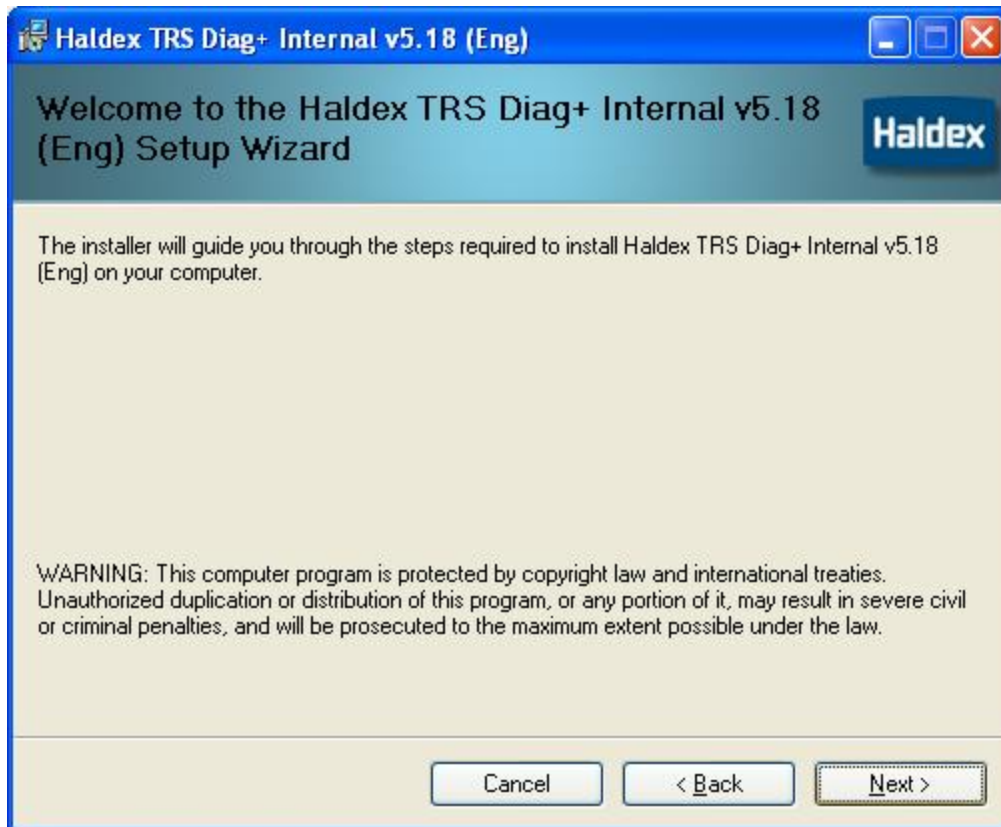
After downloading the files there should be two as below1: (your screen may look different).



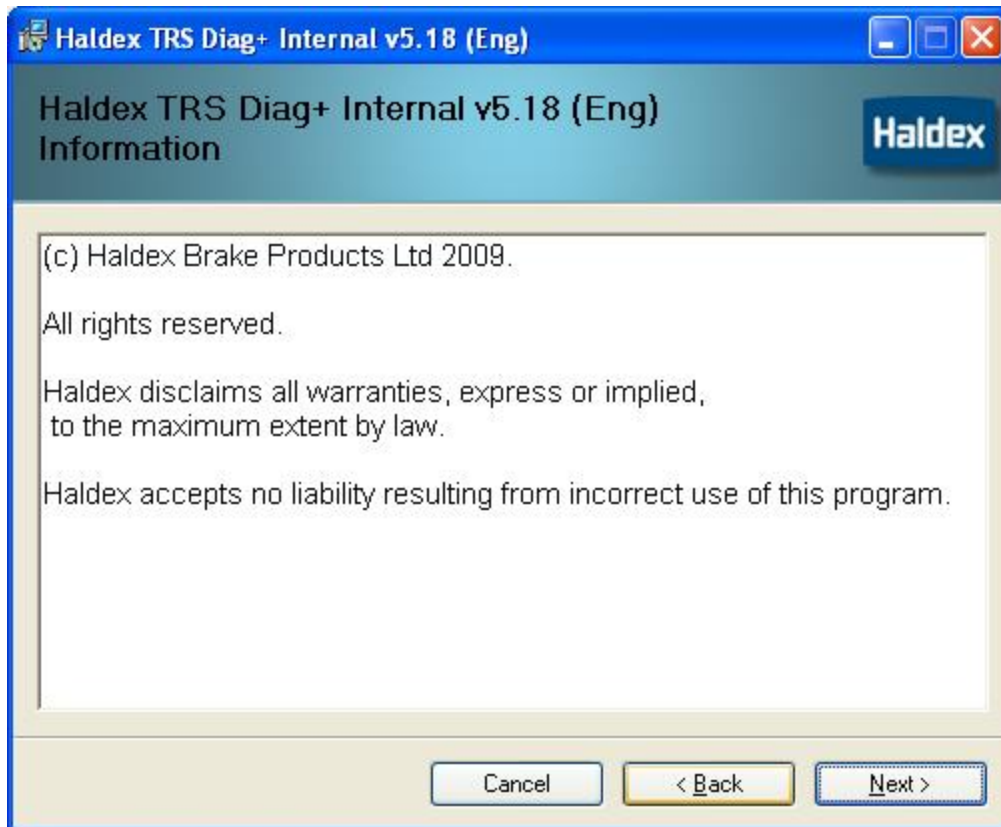
Double click the file: " TRS Level 2 Diag+ v5.18" to begin the installation. A greeting screen should appear :



Click the “Next >” button to continue to the next screen:



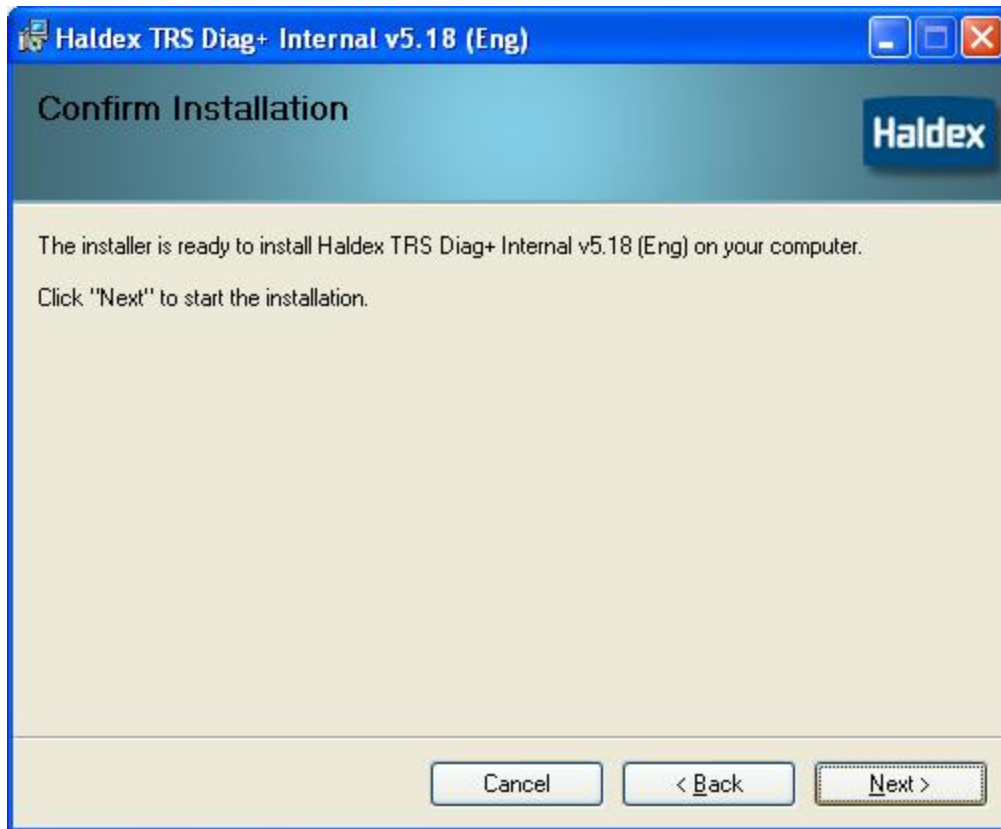
Click "Next>" to continue to:



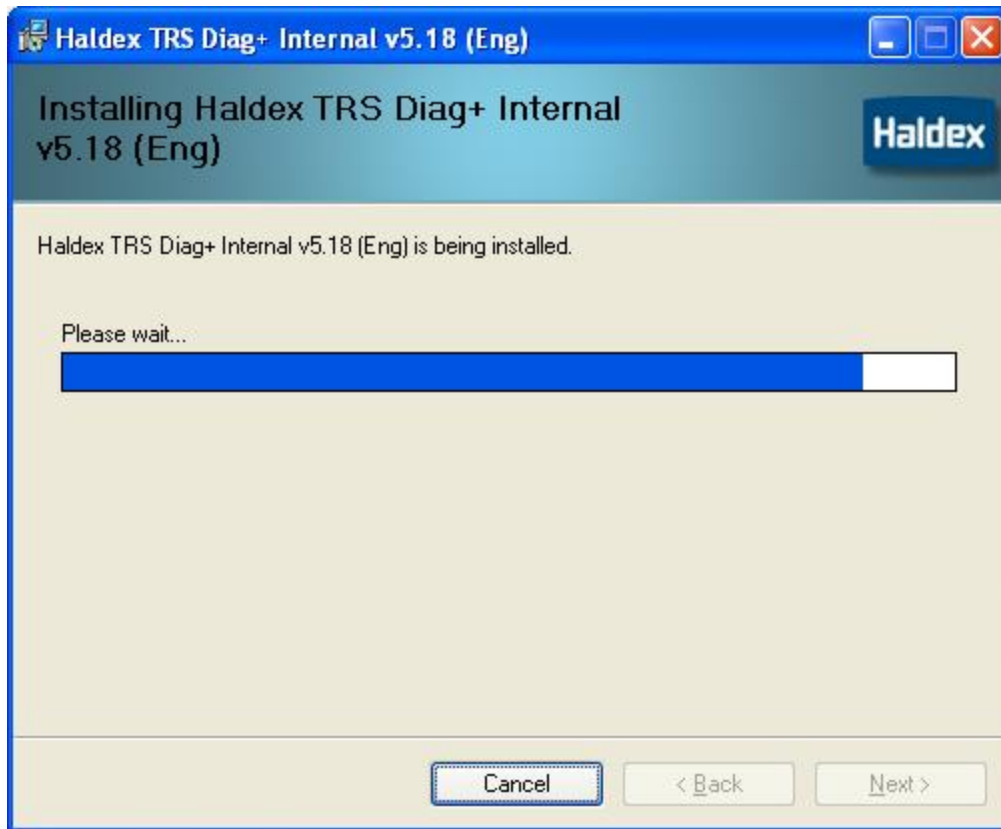
If the user does not agree with this statement click "Cancel" or Click "Next >" to continue:



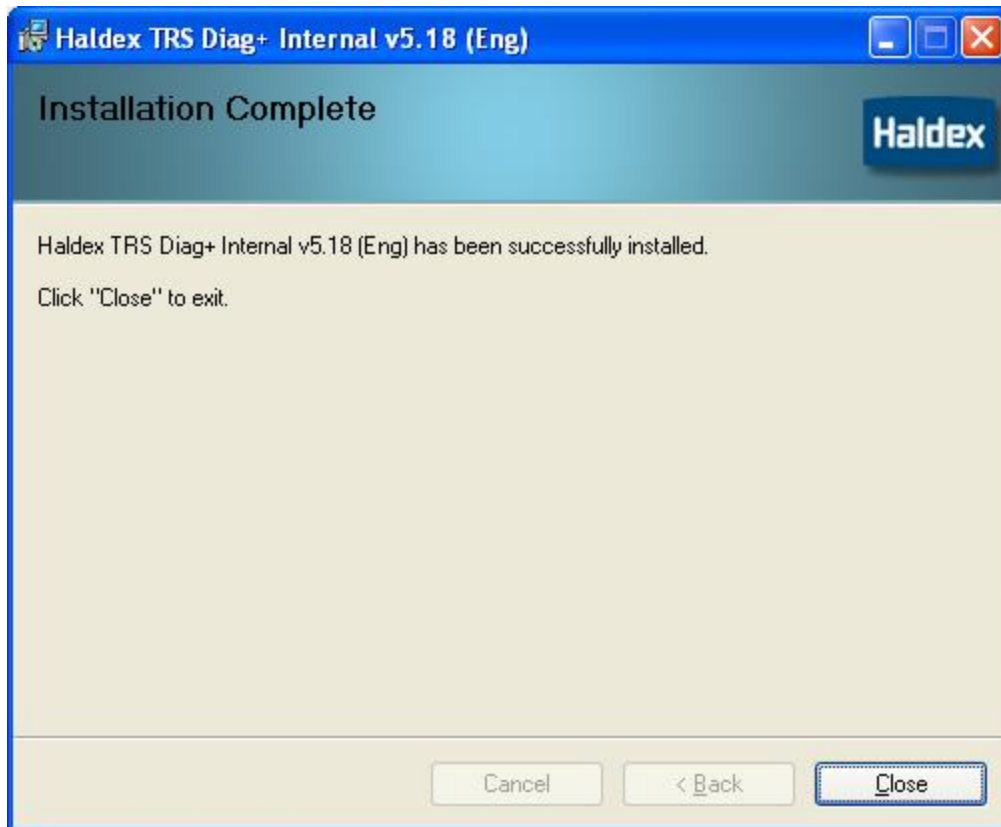
The user has the option to specify the location and restrict the usage of this software. After selection changes (if any) click "Next >" to continue:



Click the "Next >" button to continue.



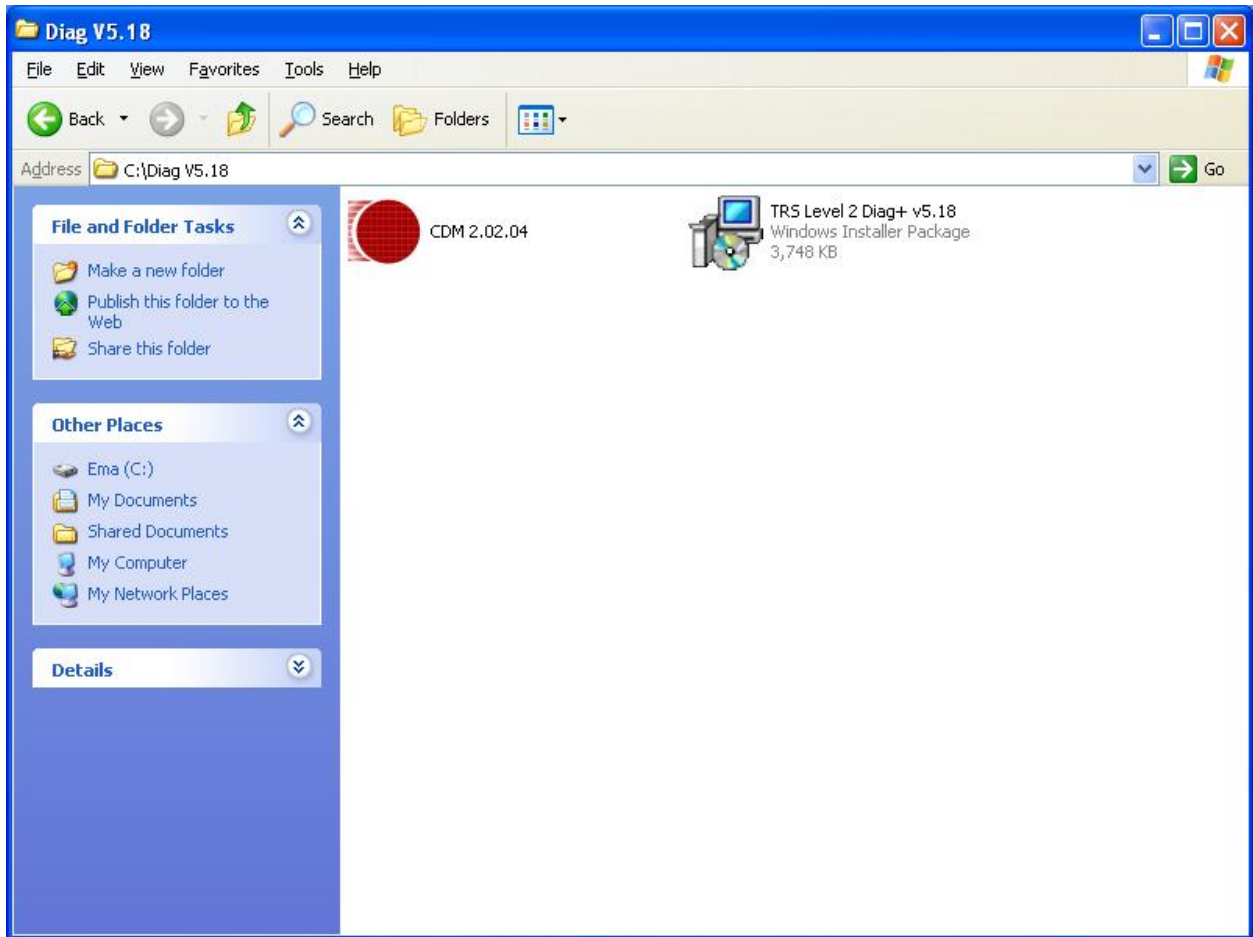
Wait for the installation to finish



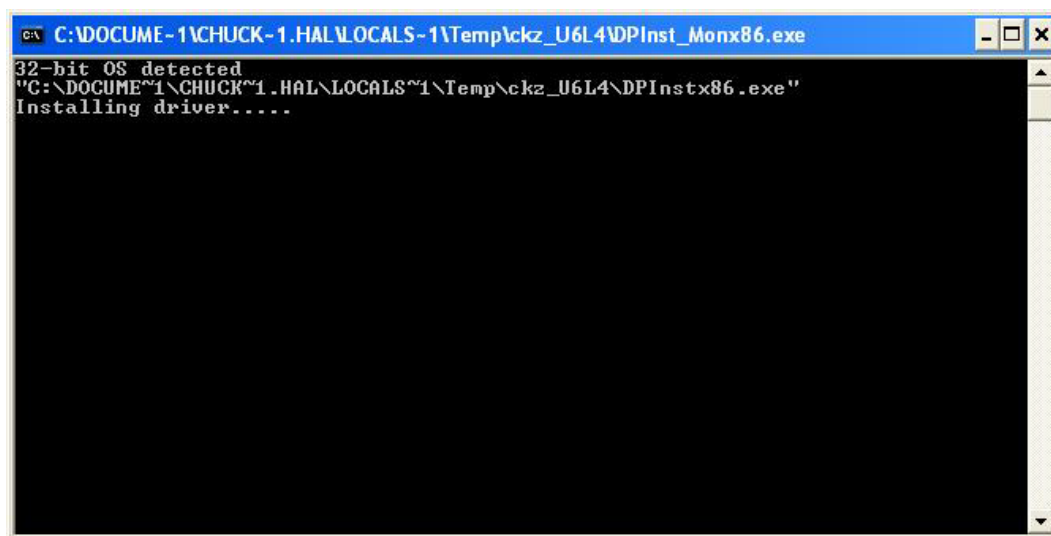
Click "Close" to finish

Step 2 Install the USB driver:

From the source file subdirectory:



Double click the file: CDM2.02.04 to begin.



The DOS window, above, will open, wait for the installation to finish.

```
c:\ C:\DOCUME~1\CHUCK~1\HAL\LOCALS~1\Temp\ckz_U6L4\DPInst_Monx86.exe
32-bit OS detected
"C:\DOCUME~1\CHUCK~1\HAL\LOCALS~1\Temp\ckz_U6L4\DPInstx86.exe"
Installing driver.....
FTDI CDM Driver Installation process completed.
Press enter.
```

Press "Enter" when finished.

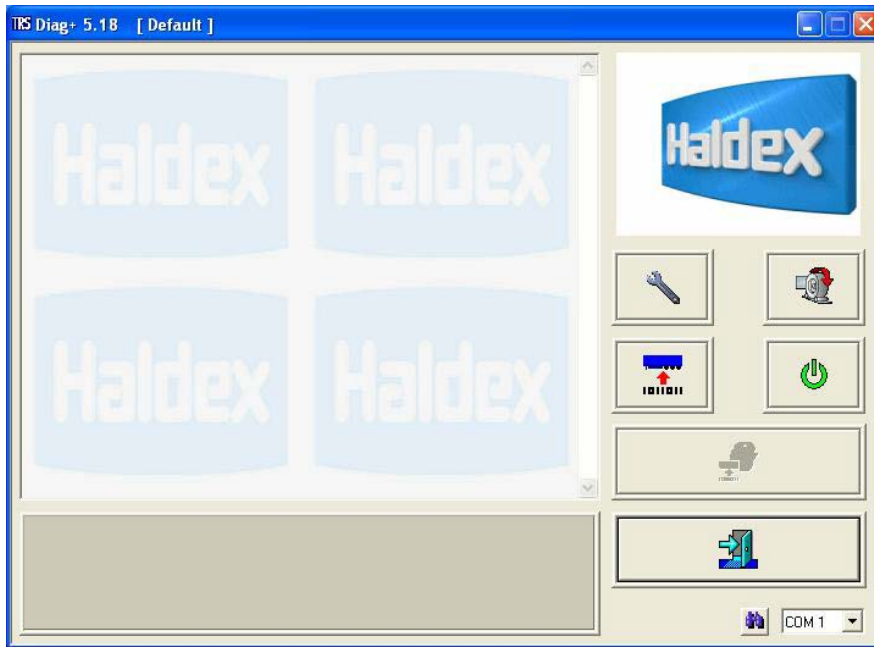
Reboot the PC. On the desktop should be this icon:



Double click the Icon to start the software.

Connect the USB interface cable and dongle to the PC's USB port. Connect the black cable between the TRS ECU and the dongle. Power up the TRS with 12 Volts DC on the permanent power circuit on the trailer. The LED on the dongle should switch color from amber to red.

If the light in the dongle does not light up, and if the main Diag+ screen appears as below:



Press the small binocular button in the lower right hand corner to scan through the USB ports.

Note to Windows 7™ users: Windows will attempt to substitute an alternate driver instead of the Haldex driver. If so, rerun the USB driver installation to force Windows 7™ to use the correct driver software.