

## Adjusting Vehicle Ride Height

1. Set ride height according to vehicle OEM specifications. (See Figure 5)
2. Lock adjustment arm in neutral position by placing the lever arm into the horizontal position.
3. Align the arrow and hole on the shaft with the slot in the housing. Place a 4mm pin in the hole to temporarily hold this position. (See Figure 6)

**NOTE: If the valve is out of adjustment, it will be exhausting air or supplying air to the air spring.**

4. Install link assembly and adjust for ride height by moving universal connector up or down the link assembly rod. (See Figure 6)
5. After adjustment is complete, tighten the clamps and remove the 4mm pin.

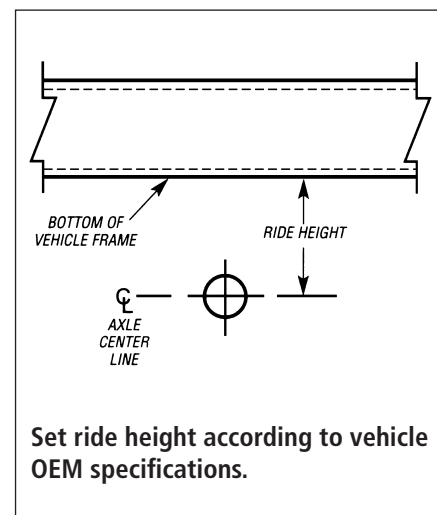


Figure 5

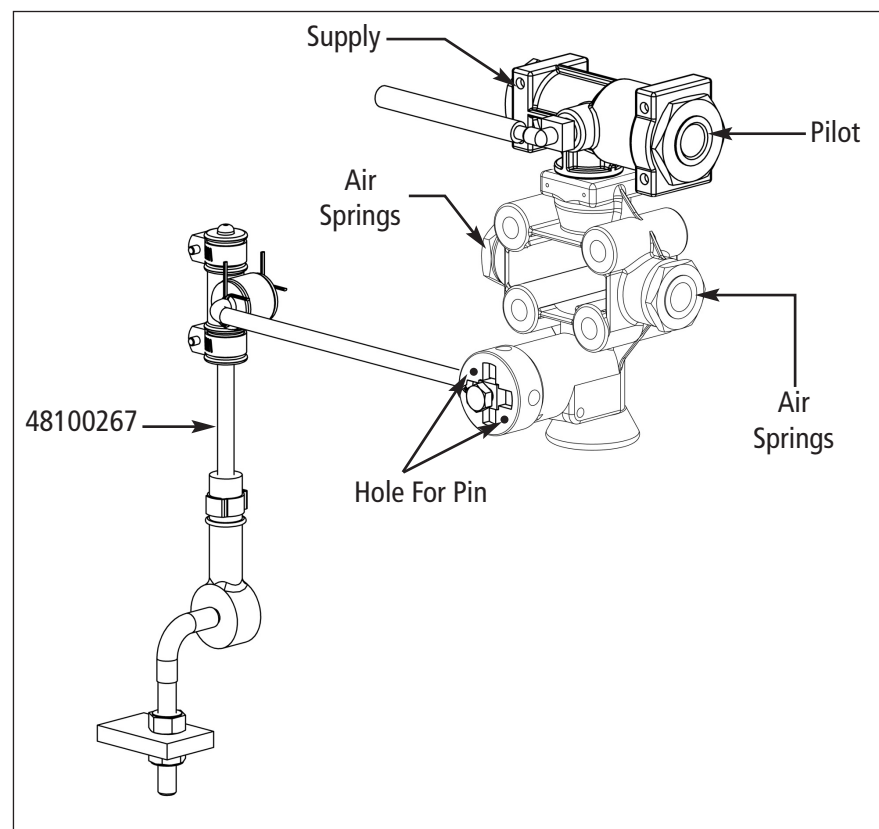


Figure 6. 90555106

## ADDITIONAL PARTS AVAILABLE FROM HALDEX

### Upgrade your Pressure Protection Valve to include an inline filter.

Part #: 90554107 Description: PPV with inline filter

### Add a suspension dump feature to your truck or trailer.

Part #: 90054088 Description: Self-relieving manual switch supplies pilot pressure to dump valves, pilot valves or other basic accessories

Part #: 90554615 Description: Remote mounted pilot valve; "auto" or manual dump installation

### Weigh your vehicle.

Part #: 42123039 Description: SM130 silicone filled pressure gauge and calibration decal

Part #: 42123040 Description: SM140 silicone filled pressure gauge and calibration decal, mounted in a weather-proof fiberglass box

### Weigh your vehicle and lower your suspension.

Part #: 42123026 Description: SMD111 silicone filled pressure gauge, pilot valve, manual switch and calibration decal, mounted in a weatherproof fiberglass box

Part #: 42123031 Description: SM115 silicone filled pressure gauge, manual switch and calibration decal, mounted in a weatherproof fiberglass box



## Innovative Vehicle Solutions

**Haldex Brake Products Corporation**  
10930 North Pomona Avenue  
Kansas City, Missouri 64153  
Phone: +1 (816) 891-2470  
Fax: +1 (816) 891-9447

**Haldex Limited/Haldex Limitée**  
500 Pinebush Road, Unit 1  
Cambridge, ON Canada N1T 0A5  
Phone: +1 (519) 621-6722  
Fax: +1 (519) 621-3924

[www.haldex.com](http://www.haldex.com)

L31186 (94100535) US Rev. 3/13 5M MEX ALP

## Instruction Guide

L31186 Rev. 3/13

## Type EGP Immediate Response Height Control Valve



## GENERAL INFORMATION

The Haldex EGP Height Control Valve (HCV) automatically adds air to, or exhausts air from air suspension to maintain a constant static design ride height.

- The Haldex EGP can be used for right or left and long or short control arm applications. Refer to installation instructions herein for proper hook-up.
- The integral dump valve is **NOT** sold separately and **CAN NOT** be interchanged on valves in the field.

Lever arm and link assemblies can be purchased by ordering 48100267 from your Haldex Distributor.

**NOTE:** The Haldex EGP valve can be interchanged with other brands of height control valves.

## PERIODIC AIR CONTROL MAINTENANCE

Drain all moisture from air reservoir at regular intervals. Normal air system maintenance should be practiced.

The air filter in the Haldex Pressure Protection Valve is removable and can be cleaned or replaced, if necessary.

## PRE-INSTALLATION WARNINGS AND REQUIREMENTS

**IMPORTANT:** It is extremely important that the original equipment manufacturers specifications are followed when installing a new valve. Refer to vehicle and suspension manufacturers instructions for location of the valve.



## SAFETY PRECAUTIONS

- Stop engine when working under a vehicle.
- Always block the vehicle wheels to prevent a fore or aft roll. Bleeding off system air pressure may cause the vehicle to roll.
- Keep hands away from brake chamber push rods and brake adjusters; they may apply as system pressure drops.
- Never exceed recommended working air pressure and always wear safety glasses when working with air pressure.
- Never look directly into component ports or direct a pressurized air flow at anyone.
- Never attempt to disassemble a component until you have read and understood all recommended procedures. Some components contain powerful springs and injury can result if not properly disassembled.
- Use only proper tools and observe all precautions pertaining to the use of those tools.
- Prior to disconnecting or connecting any airlines or valves, bleed off all air pressure from the air supply system. Failure to do so can result in severe injury.

## SYSTEM REQUIREMENT WARNINGS

- Do not install a single height control valve of any type if the suspension or vehicle manufacturer specifies a two (2) height control valve system.
- Do not use a time delay valve with an EGP valve on the same vehicle.
- Do not use antifreeze or other solvents in air supply line. Use of solvents or antifreeze can damage seals and void the valve warranty.

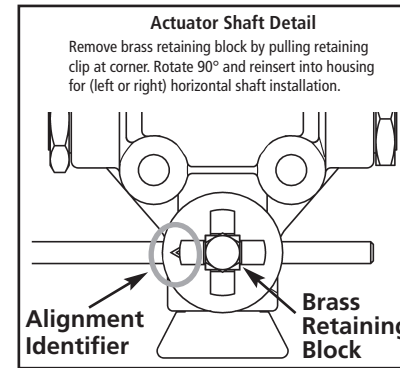
## ADDITIONAL REQUIRED COMPONENTS

- Use a Pressure Protection Valve (PPV) and filter such as Haldex 90554107.
- Attach PPV directly to the air reservoir for supply to the EGP.

## INSTALLATION INSTRUCTIONS

Part Number	Dump Valve	Ports
90555105	-	1/4" NPT
90555106	Normally Open*	1/4" NPT
	Normally Open*	1/4" NPT

\* Needs air pressure to activate dump valve



### 1. Prepare the vehicle for installation.

A Haldex EGP can be installed in a vertical or a horizontal position with the control arm in either right-hand or left-hand position.

**Important:** Direction arrow must be in proper position for valve to function properly. (See Figure 2)

2. Install the EGP in the recommended position by bolting it to the specified surface using 5/16" diameter or 8mm mounting bolts. (See Figure 1 for mounting bolt spacing)

3. Connect the air supply line to the air supply port of the EGP. If using 90555106, the supply port is port 1. (See Figure 2)

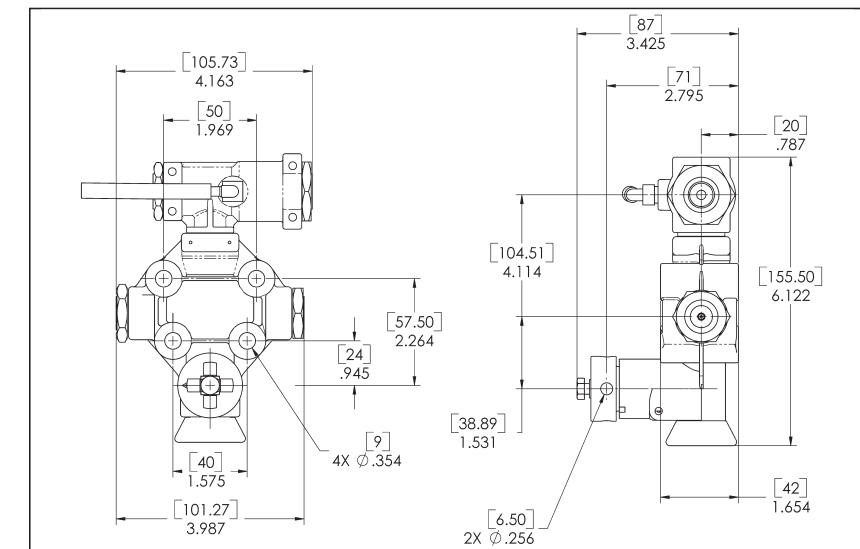
4. For both vertical and horizontal position, connect airlines from the air spring to the air spring(s) port(s) as shown in Figure 3. If only one air spring port is used, the other port must be plugged.

5. Install the EGP control arm. Refer to Figure 2 for proper control arm installation.

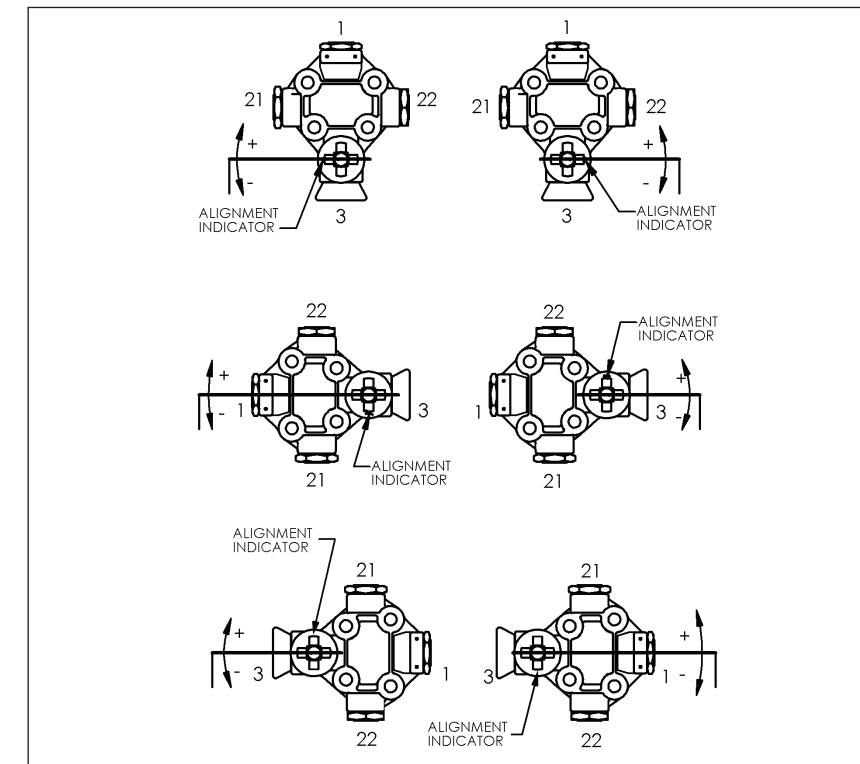
**NOTE:** Correct position of the direction arrow on the valve actuator shaft to the direction of the control arm is critical. Incorrect installation will impair suspension and vehicle performance. (See Figure 2)

6. To insure that the control arm is properly installed, temporarily supply air pressure to the EGP and rotate the control arm up (approximately 20° above horizontal) and check if air pressure begins to inflate the air spring(s). If the air springs are not being inflated, recheck the air lines for proper port connection and the control arm and actuation shaft for proper position.

If the EGP properly inflates the air spring(s), rotate control arm down (approximately 20° below horizontal) to check if air pressure is being exhausted from the air spring(s) through the exhaust port of the EGP. Once it has been determined that the control arm is in the proper position apply Red Loctite to locking bolt threads and then torque the locking bolt to 72-96 in.lbs. (See Figure 4)

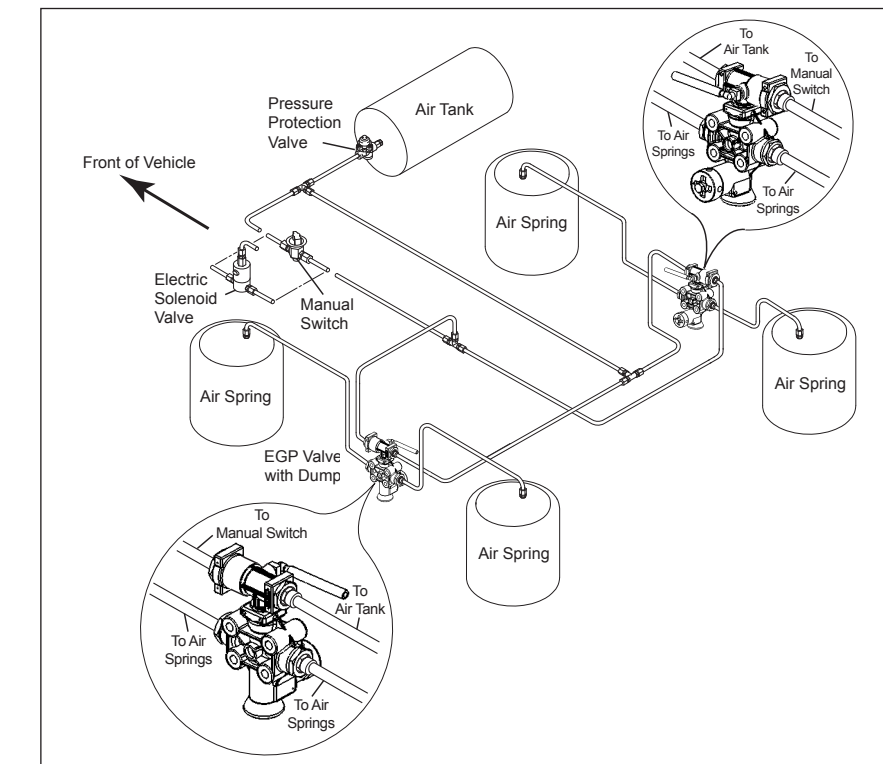


**Figure 1. 90555106 EGP Reference Dimension Details**

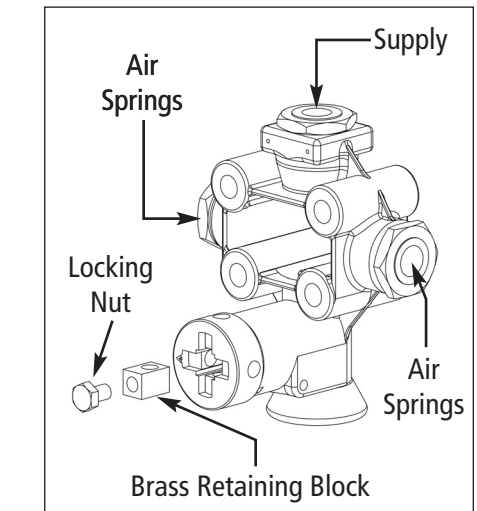


**Figure 2. Vertical and Horizontal Installation**

Insert Control Arm in EGP Height Control Valve with direction arrow on shaft in proper location.



**Figure 3. 90555106**



**Figure 4. 90555105**