

PREPARATION AND REMOVAL OF THE VALVE TO BE REPLACED (cont'd)

3. Drain all tractor reservoirs.
4. Locate valve to be replaced.
5. Carefully tag all air lines which are connected to the valve being replaced, as follows:
 - A. Trailer Service
 - B. Trailer Emergency (supply)
 - C. Tractor Service
 - D. Tractor Emergency (supply)

WARNING

Before placing the vehicle back in service, close the reservoir drains and perform the following tests:

1. Reconnect tractor to trailer. Charge the tractor air system. Activate the trailer supply valve in the tractor cab. Observe trailer emergency brakes releasing and trailer reservoirs filling.
2. Pull knob on trailer supply valve, observe trailer emergency brakes applying.
3. Activate the trailer supply valve again. Next, make a pedal or hand valve application. Be sure service brakes are working. Repeat several times.
4. Check new installation for leaks around fittings and connections.
5. Have tractor air system charged and trailer supply valve activated. Disconnect the emergency (supply) gladhand. Observe trailer emergency brakes applying and trailer supply valve shutting off air supply to emergency line.
6. Upon successful completion of the above test, remove the wheel blocks.



Haldex Commercial Vehicle Systems

Haldex Brake Products Corporation

10930 North Pomona Avenue
Kansas City, MO 64153-1256

Phone: (816) 891-2470

Fax: (816) 891-9447

Haldex Limited

525 Southgate Drive, Unit 1
Guelph, Ontario CANADA N1G 3W6

Phone: (519) 826-7723

Fax: (519) 826-9497

www.haldex.com

L31051 US 1/10 1M ALP (Last Rev. 7/02)



Installation Guide

L31051

Rev. 7/02

**FROM
Bendix**



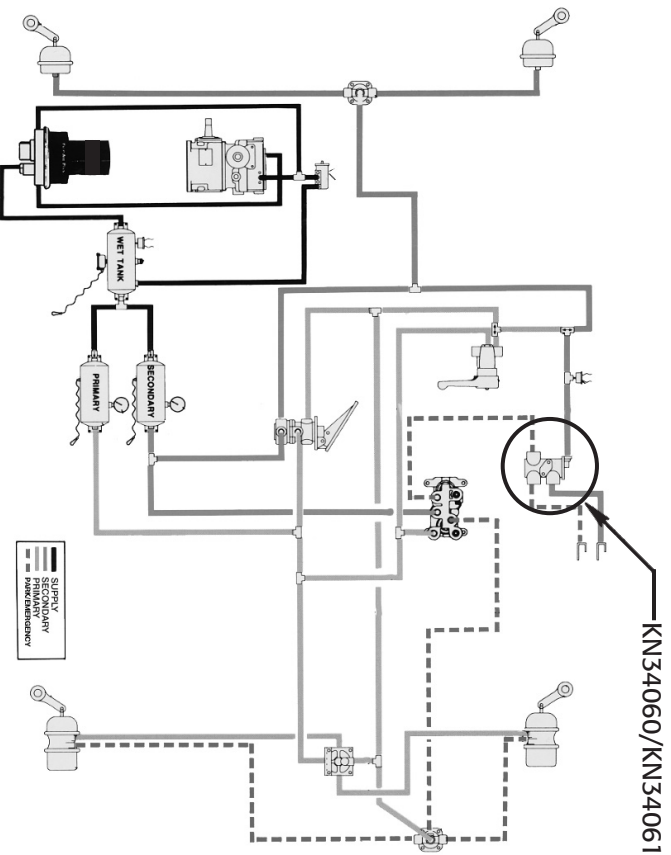
**TO
Haldex**



**CHANGEOVER AND INSTALLATION
INSTRUCTIONS 2-LINE NON-AUTOMATIC
TRACTOR PROTECTION VALVE
Part #: KN34060/KN34061**

The Haldex KN34060/KN34061 Tractor Protection Valve (2 Line) Non-Automatic will replace the Bendix TP-3's. Some rerouting of lines may be required.

The following information provides proper instructions for the installation or changeover of the Haldex KN34060/KN34061 Tractor Protection Valve.

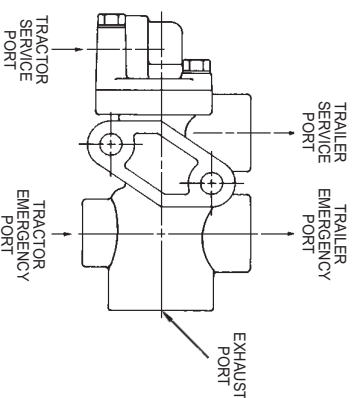


WARNING

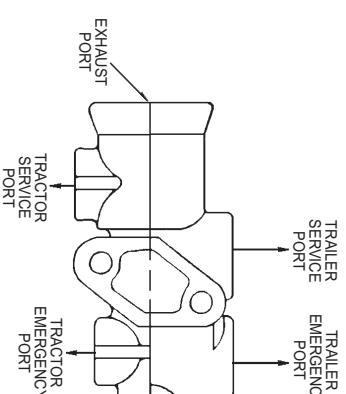
When working on air system components the following precautions should be observed.

1. Stop engine when working under a vehicle. Always lock the vehicle wheels against a fore or aft roll. Bleeding off system air pressure may cause the vehicle to roll. Keep hands away from brake chamber push rods and brake adjusters; they may apply as system pressure drops.
2. Never connect or disconnect a hose or line containing air pressure. It may whip as air escapes. Never remove a component or a pipe plug unless you are certain all system air pressure has been exhausted.
3. Never exceed recommended working air pressure and always wear safety glasses when working with air pressure. Never look directly into component ports or direct a pressurized air flow at anyone.
4. Never attempt to disassemble a component until you have read and understood all recommended procedures. Some components contain powerful springs and injury can result if not properly disassembled. Use only proper tools and observe all precautions pertaining to the use of those tools.

HALDEX KN34060/KN34061



BENDIX TP-3



FROM BENDIX TO HALDEX

Bendix Part No.	Trailer Service & Emergency Port Size	Same as Haldex
279000	1/2 N.P.T.	Same as Haldex
279692	3/8 N.P.T.	Reducer Bushing Required
280830	1/2 N.P.T.	Same as Haldex
280932	1/2 N.P.T.	Same as Haldex
288055	1/2 N.P.T.	Same as Haldex

On both the Bendix and the Haldex the Tractor Service port is 3/8 N.P.T.

On both the Bendix and the Haldex the Tractor Emergency port is 1/4 N.P.T.

The exhaust port on the Bendix valve is on the opposite end of the valve from the Haldex exhaust port. When installing the Haldex valve, the exhaust port must face downward.

The Haldex KN34060/KN34061 is to be installed **ONLY** in systems with a non-override high pop pressure dash valve.

The Haldex KN34060/KN34061 **will not** replace any Haldex or Sealco **automatic** two-line tractor protection valve.

PREPARATION AND REMOVAL OF THE VALVE TO BE REPLACED

1. Block tractor and trailer wheels to prevent fore or aft roll.
2. Disconnect tractor/trailer hose couplings. (continued on reverse side)